

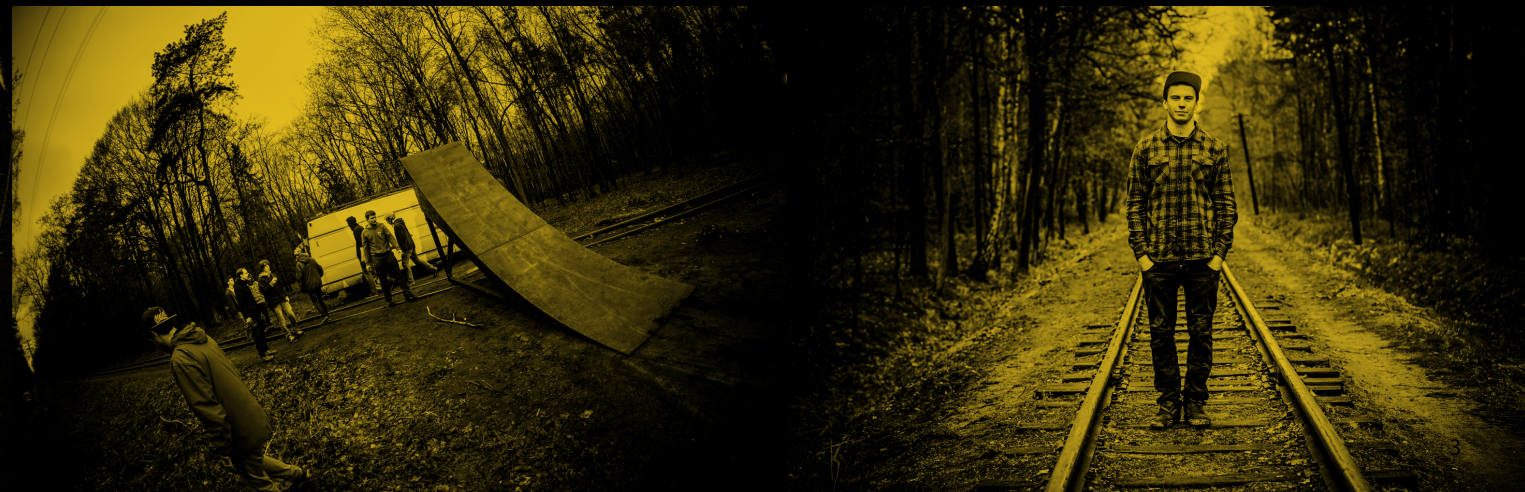
DARTMOORBIKES2014
#RIDEFYOURWAY

DARTMOOR BIKES

INSIDE STORY

„DARTMOOR BIKES - INSIDE STORY“ was our first big movie that showed just who we all are and how we work from the inside. A bunch of mates full of passion who brings Dartmoor to the public. No matter what each of us do, from designing, managing media to being a pro rider, we all ride. We are all connected by our riding oriented lifestyle.

In the movie we also shown the road each part takes from the computer file to the top step of the podium. Over the year we have collected a lot of content from the different branches of our lives to show you our stories - from inventing the new products to the backflipping the train by Szymon Godziek. Everyone at **Dartmoor Bikes** are far from the blue collar 9 am to 5 pm worker is only concerned with the balance sheet. We are living for riding and that's how we **Ride Your Way**.



WISH PRO

WISH PRO

Wish Pro bike is a build for all those bike lovers who look for some adrenaline in the mountains. You will have a great fun with this stunning machine in the bikeparks or on the big drops. The bike comes with Rock Shox Lyrik air suspension fork and Rock Shox Monarch air shock to let everyone adjust suspension to their needs and terrain requirements.

Wish Pro is controlled through the wide Dartmoor Nitro bars, top Avid Elixir 5 hydraulic brakes and Truvativ Hussefelt cranks with alu 7075 Dartmoor Totem chainring. Strong and lightweight wheels are based on the Raider rims with Revolt 20 front hub and Vee-Oh rear hub for increased stiffness. Drivetrain uses top SRAM components with X7 rear derailleur, X5 shifter and 9-speed cassette.

Frame	silver brushing, alu 7005, 160mm travel
Fork	R5 Lyrik Solo Air R, 160mm travel, 20mm axle
Shock	Rock Shox Monarch R, 216x63mm
Bars	Nitro, alu 7075, 31.8mm/780mm
Grips	Icon
Stem	Fury OEM, alu 6061, 31.8mm/45mm
Headset	Blaze OEM, tapered, sealed bearings
Crank	Truvativ Hussefelt, 170mm crankarms, Totem 36T chainring
BB	Truvativ How XR73 BB
Chain guide	Blade ISCG-05
Chain	Shimano CN-HG53
Pedals	Stream Pro
Rear derailleur	SRAM X-7
Shifter	SRAM X-5, 9-speed
Cassette	SRAM PG-950, 11-28T
Rear hub	Vee-Oh OEM, 36H, sealed bearings
Front hub	Revolt 20 OEM, 36H, sealed bearings
Rims	Raider, 26", 36H, double wall
Tires	Kenda Nevegal, 26x2.35"
Seat / Seat post	Ivy, Pivotal / Fusion L, 31.6x300mm
Brake / Lever	Avid Elixir 5, 203mm rotor, front/rear
Weight	15.5kg

Reach (mm)	Stack (mm)	ST (mm)	TT (mm)	eTT (mm)	CS (mm)	HT (mm)	HT angle	ST angle	BB drop (mm)	WB (mm)	Hub size (mm)	Headset type (S.H.I.S)	BB type (mm)	Post diam. (mm)	Clamp diam. (mm)
403	576	343	559	556	425	115	66.5°	75°	12	1128	135x10	EC34/EC49	Euro 73	31.6	34.9



WISH

The Wish complete bike is created to offer this great frame together with reliable components in more affordable package. Suspension is provided here by the X-Fusion Vector shock working together with strong RST Storm Super tapered fork offering you 160mm travel front and rear. Other cool components include: SRAM X-5 rear derailleur with X-4 8-speed shifter; Truvativ Ruktion cranks; new alu 31.8mm Dartmoor Ice OEM handlebar with Fury stem; Raider rims with Vee-Oh/Dee-Force hubs; hydraulic brakes with big 8” rotors; Stream pedals; Blaze headsets; Icon grips and Kenda Nevegal tyres.



Frame	metallic turquoise, alu 7005, 160mm travel	Pedals	Stream, replaceable pins
Fork	RST Storm Super tapered, 160mm travel, 20mm axle	Rear derailleur	SRAM X-5
Shock	X-Fusion Vector R, 216x63mm	Shifter	SRAM X-4, 8-speed
Bars	Fire, alu 6061, 31.8mm/700mm	Cassette	SRAM PG-830, 11-32T
Grips	Icon	Rear hub	Vee-Oh OEM, 36H, sealed bearings
Stem	Fury 2012, alu 6061, 31.8mm/45mm	Front hub	Dee-Force, 36H, sealed bearings
Headset	Blaze OEM, tapered, sealed bearings	Rims / Tires	Raider, 26", 36H, double wall / Kenda Nevegal 26x2.35"
Crank	Truvativ Ruktion, 170mm crankarms, 36T chainring	Seat / Seat post	Ivy, Pivotal / Fusion L, 31.6x300mm
BB	Truvativ How XR73 BB	Brake / Lever	Promax DSK-907, 203mm rotor, front/rear
Chain / Ch. guide	KMC-X8 / Blade ISCG-05	Weight	17.5kg

Reach (mm)	Stack (mm)	ST (mm)	TT (mm)	øTT (mm)	CS (mm)	HT (mm)	HT angle	ST angle	BB drop (mm)	WB (mm)	Hub size (mm)	Headset type (S.H.I.S)	BB type (mm)	Post diam. (mm)	Clamp diam. (mm)
403	576	343	559	556	425	115	66.5°	75°	12	1128	135x10	EC34/EC49	Euro 73	31.6	34.9

SHINE

Following the success of our Shine frame we come with this complete Slopestyle/Dirt Jump full suspension bike. The rear suspension is provided by the Rock Shox Monarch air shock and at the front you can find the Suntour Duro Air fork. The braking power will provide a set of Avid Elixir brakes and the rest of components are mostly the top Dartmoor parts including Revolt hubs with sealed bearings and 13T driver at the end, Raider rims, Stream Pro pedals with sealed bearings, Flash headsets with sealed bearings and a reliable cockpit made of Fury stem, Ice handlebar and Icon grips.



Frame	green metallic, alu 7005, 100mm travel	Pedals	Stream Pro
Fork	Suntour DURO-DJ RC AIR, 100mm travel, 20mm axle	Rear hub	Revolt SS OEM, 36H, sealed bearings, 13T driver
Bars	Ice, alu 6061, 25.4mm/700mm	Front hub	Revolt 20 OEM, 36H, sealed bearings
Grips	Icon	Spokes	steel, brass nipples
Stem	Fury OEM, alu 6061, 25.4mm/35mm	Rims	Raider, 26", 36H, double wall
Headset	Flash OEM, sealed bearings	Tires	Kenda SBE, 26x1.95"
Crank	Truvativ Ruktion, 170mm crankarms	Seat / Seat post	Ivy, Pivotal / Fusion, 27.2x200mm
BB	Truvativ How XR73 BB	Seat clamp	31.8mm, alu 6061
Chainring	32T, steel, with bushguard	Brake/Lever	Avid Elixir 1, 160mm rotor, front/rear
Chain	Core 3/32"	Weight	13.5kg

Reach (mm)	Stack (mm)	ST (mm)	TT (mm)	CS (mm)	HT (mm)	HT angle	BB drop (mm)	WB (mm)	Hub size (mm)	Headset type (S.H.I.S)	BB type (mm)	Post diam. (mm)	Clamp diam. (mm)
387	565	305	554	403	115	67.5°	16	1081	135x10	EC34/ZS49	Euro 73	27.2	31.8

26PLAYER

TWO6PLAYER PRO

A world class aluminium hardtail for Dirt Jump/Skatepark/Slopestyle. The Two6Player Pro version is based on the latest edition of the aftermarket Two6Player frame with all its hi-end features, like a hydroformed down tube, tapered head tube, custom designed dropouts and BB-CS yoke.

Suspension is provided by the famous Rock Shox Argyle fork, helping you survive those dodgy landings . The other top components include wheels built on a combination of Dartmoor Revolt and Rider parts rolling on Kenda's SBE tyres, cockpit made of Icon grips, Ice handlebar and our innovative Micron stem, Candy Pro lightweight plastic pedals equipped with sealed bearings and an Avid Elixir hydraulical rear brake.

The frame comes in our new Miami Vice color scheme and as the weight says it - the complete bike is just 11.85kg! Now all you need to do is just get out there and ride it!

Frame	matt miami vice (red-yellow), alu 7005
Fork	RS Argyle R, 100mm travel, 20mm axle
Bars	Ice, alu 6061, 25.4mm/700mm
Grips	Icon
Stem	Micron, alu 6066, 25.4mm/30mm
Headset	Flash OEM, sealed bearings
Crank	Samox, 3-pcs tubular, cr-mo 4130, 175mm crankarms
BB	Euro 19mm, sealed bearings
Chainring	Peacock 25T, alu 6061
Chain	Core 1/8"
Pedals	Candy Pro, plastic pedals, sealed bearings
Rear hub	Revolt SS OEM, 36H, sealed bearings, 10T driver
Front hub	Revolt 20 OEM, 36H, sealed bearings
Spokes	steel, brass nipples
Rims	Raider, 26", 36H, double wall
Tires	Kenda SBE, 26x1.95"
Seat	Lite Combo (27.2mm post)
Seat clamp	31.8mm, alu 6061
Brake/Lever	Avid Elixir 1, 160mm rotor, rear
Weight	11.85kg

Reach (mm)	Stack (mm)	ST (mm)	TT (mm)	CS (mm)	HT (mm)	HT angle	BB drop (mm)	WB (mm)	Hub size (mm)	Headset type (S.H.I.S)	BB type (mm)	Post diam. (mm)	Clamp diam. (mm)
412	566	310	574	385	115	68°	-18	1059	135x10	EC34/ZS49	Euro 73	27.2	31.8



QUINNIE

QUINNIE

Top class Dirt Jump/Skatepark machine you can take out of the box and head directly for your dream contest. No weak parts included. Equipped with the Suntour Duro Air fork and top class Dartmoor sealed bearings hubs. Pro geometry frame, fully made of 100% Cr-Mo 4130 steel with integrated seat clamp and head tube for integrated headset. Furthermore specification is including Dartmoor aftermarket Raider rims, Stream pedals, Zulu 7075 sprocket, Core chain and Lite seat combo. Cockpit consists of the Dartmoor OEM Ice bars, Fury stem and Shamann grips.



Frame	matt black, 100% Cr-Mo 4130												
Fork	Suntour DURO-DJ RC AIR, 100mm travel, 20mm axle												
Bars	Ice, alu 6061, 25.4mm/700mm												
Grips	Shamann												
Stem	Fury OEM, alu 6061, 25.4mm/35mm												
Headset	Neco, integrated 45°/45°, sealed bearings												
Crank	3-pcs tubular, heat-treated, 175mm crankarms												
BB	Spanish 19mm, sealed bearings												
Chainring	Zulu 25T, alu 7075												
Chain	Core 1/8"												
Pedals	Stream, replaceable pins												
Rear hub	Revolt SS OEM, 36H, sealed bearings, 10T driver												
Front hub	Revolt 20 OEM, 36H, sealed bearings												
Spokes	steel, brass nipples												
Rims	Raider, 26", 36H, double wall												
Tires	Kenda SBE, 26x1.95"												
Seat	Lite Combo												
Seat clamp	integrated												
Brake/Lever	Avid Elixir 1, 160mm rotor, rear												
Weight	12.2kg												

Reach (mm)	Stack (mm)	ST (mm)	TT (mm)	CS (mm)	HT (mm)	HT angle	BB drop (mm)	WB (mm)	Hub size (mm)	Headset type (S.H.I.S)	BB type (mm)	Post diam. (mm)	Clamp diam. (mm)
402	543	300	574	383	110	68.5°	0	1050	135x10	IS42/IS42	Spanish 68	27.2	integr.

QUANTUM

QUANTUM

26" entry level hardtail, ready for skatepark and street riding. Full of hi-end Dartmoor components and ready for further upgrading. Custom designed frame with pro geometry with main tubes made of 100% Cr-Mo 4130 steel. Frame comes with the integrated seat clamp and head tube for integrated headset. Specification is including double wall rims, Shamann grips, Stream pedals, Core chain, Lite seat combo, Dartmoor OEM Ice bars, Fury stem, Chukka cranks and a singlespeed rear hub with sealed bearings.



Frame	matt black, Cr-Mo 4130												
Fork	rigid fork, Cr-Mo 4130 steerer tube, offset 30mm												
Bars	Ice, alu 6061, 25.4mm/700mm												
Grips	Shamann												
Stem	Fury OEM, alu 6061, 25.4mm/35mm												
Headset	Neco, integrated 45°/45°, sealed bearings												
Crank	3-pcs tubular, heat-treated, 175mm crankarms												
BB	Spanish 19mm, sealed bearings												
Chainring	32T, steel												
Chain	Core 1/8"												
Pedals	Stream OEM, molded pins												
Rear hub	male singlespeed, 36H, sealed bearings, 14T freewheel												
Front hub	3/8" male axle, 36H, loose ball bearings												
Spokes	steel, brass nipples												
Rims	Shining, 26", 36H, double wall												
Tires	Kenda K-Rad 26x2.3"												
Seat	Lite Combo												
Seat clamp	integrated												
Brake/Lever	Alhonga V-Brake												
Weight	13.2kg												

ST (mm)	TT (mm)	CS (mm)	HT (mm)	HT angle	BB drop (mm)	Hub size (mm)	Headset type (S.H.I.S)	BB type (mm)	Post diam. (mm)	Clamp diam. (mm)
310	573	383	110	70°	-10	135x10	IS42/IS42	Spanish 68	27.2	integr.

GAMER26

GAMER 26

The Gamer 26 bike is a fantastic bike for the guys looking to get into dirt, street riding and all about having fun in their lives, without breaking the bank. Built perfectly for the new rider, looking for much needed air time, the Gamer is a chance to get a solid new bike for the price of the used one.

Equipped with 26" wheels it is designed to offer geometry that will suit both the dirt jumpers and street riders. Stacked with our entry level but pretty much reliable components and RST Dirt T fork this bike will help making the job of learning new tricks much easier. The weight of the complete bike is just under 14kg so the Gamer 26 will be stable even when things get out of your comfort zone.

Frame	shiny black / metallic blue, alu 6061
Fork	RST Dirt T, 100mm travel, 3/8" axle
Bars	Storm, cr-mo 4130, 22.2mm/700mm
Grips	Blink
Stem	Fury V.2 OEM, alu 6061, 22.2mm/35mm
Headset	Neco, integrated tapered, sealed bearings
Crank	Samox AF12-D32S, alu 6061, 175mm crankarms
BB	Samox SAX-J21ST, square BB
Chainring	32T, steel
Chain	Core 1/8"
Pedals	Candy OEM, plastic pedals, ball bearings
Rear hub	male singlespeed, 36H, sealed bearings, 14T freewheel
Front hub	3/8" male axle, 36H, sealed bearings
Spokes	steel, brass nipples
Rims	Weinmann AS32, 26", 36H, single wall
Tires	Kenda K-Rad, 26x2.3"
Seat	Lite Combo (27.2mm post)
Seat clamp	31.8mm, alu 6061
Brake/Lever	Promax DSK-310, 160mm rotor, rear
Weight	13.7kg

Reach (mm)	Stack (mm)	ST (mm)	TT (mm)	CS (mm)	HT (mm)	HT angle	BB drop (mm)	WB (mm)	Hub size (mm)	Headset type (S.H.I.S)	BB type (mm)	Post diam. (mm)	Clamp diam. (mm)
403	579	354	557	385	115	70°	25	1036	135x10	IS42/IS52	Euro 73	27.2	31.8



GAMER24

GAMER 24

The Gamer 24 bike is the bike for the new young rider looking to get into the cool sport of dirt and street riding. With 24" wheels it is built for the smaller riders and yet able to cope with everything that's thrown at it. The bike is a chance to get a solid new complete for the price of the used one. Designed to offer geometry that will suit dirt jumpers and street riders. Equipped with the same reliable components as his bigger brother, Gamer 26, this bike will help making the job of learning new tricks much easier.



Frame	metallic red, alu 6061	Pedals	Candy OEM, plastic pedals, ball bearings
Fork	RST Dirt T, 100mm travel, 3/8" axle	Rear hub	male singlespeed, 36H, sealed bearings, 14T freewheel
Bars	Storm, cr-mo 4130, 22.2mm/700mm	Front hub	3/8" male axle, 36H, sealed bearings
Grips	Blink	Spokes	steel, brass nipples
Stem	Fury V.2 OEM, alu 6061, 22.2mm/35mm	Rims	Weinmann AS32, 24", 36H, single wall
Headset	Neco, integrated tapered, sealed bearings	Tires	Kenda K-Rad, 24x2.3"
Crank	Samox AF12-D32S, alu 6061, 165mm crankarms	Seat	Lite Combo (27.2mm post)
BB	Samox SAX-J21ST, square BB	Seat clamp	31.8mm, alu 6061
Chainring	32T, steel	Brake/Lever	Promax DSK-310, 160mm rotor, rear
Chain	Core 1/8"	Weight	13.6kg

Reach (mm)	Stack (mm)	ST (mm)	TT (mm)	CS (mm)	HT (mm)	HT angle	BB drop (mm)	WB (mm)	Hub size (mm)	Headset type (S.H.I.S)	BB type (mm)	Post diam. (mm)	Clamp diam. (mm)
388	562	325	540	370	115	70°	8	1006	135x10	IS42/IS52	Euro 73	27.2	31.8



BIKE SPECS

MODEL	WISH PRO	WISH	SHINE	TWO6PLAYER PRO
Frame	silver brushing alu 7005, 160mm travel	metallic turquoise alu 7005, 160mm travel	metallic green alu 7005, 100mm travel	matt miami vice (red-yellow) alu 7005
Fork	RS Lyrik Solo Air R 160mm travel, 20mm axle	RST Storm Super tapered 160mm travel, 20mm axle	Suntour DURO-DJ RC AIR 100mm travel, 20mm axle	RS Argyle R 100mm travel, 20mm axle
Shock	Rock Shox Monarch R 216x63mm	X-Fusion Vector R 216x63mm	Rock Shox Monarch R 190x51mm	-
Bars	Nitro, alu 7075 31.8mm/780mm	Fire, alu 6061 31.8mm/700mm	Ice, alu 6061 25.4mm/700mm	Ice, alu 6061 25.4mm/700mm
Grips	Icon	Icon	Icon	Icon
Stem	Fury OEM 2013, alu 6061 31.8mm/45mm	Fury 2012, alu 6061 31.8mm/45mm	Fury OEM 2013, alu 6061 25.4mm/35mm	Micron, alu 6066 25.4mm/30mm
Headset	Blaze OEM, tapered sealed bearings	Blaze OEM, tapered sealed bearings	Flash OEM, tapered sealed bearings	Flash OEM, tapered sealed bearings
Cranks	Truvativ Hussefelt 170mm crankarms	Truvativ Ruktion 170mm crankarms	Truvativ Ruktion 170mm crankarms	Samox, 3-pcs tubular Cr-Mo 4130, 175mm crankarms
BB	Truvativ How XR73 BB	Truvativ How XR73 BB	Truvativ How XR73 BB	Euro 19mm sealed bearings
Chainring	Totem 36T, alu 7075	36T, steel	32T, steel, with bushguard	Peacock 25T, alu 6061
Chain guide	Blade ISCG-05	Blade ISCG-05	-	-
Chain	Shimano CN-HG53	KMC-X8	Core 3/32"	Core 1/8"
Pedals	Stream Pro	Stream, replaceable pins	Stream Pro	Candy Pro plastic pedals sealed bearings
Rear derailleur	SRAM X-7	SRAM X-5	-	-
Shifter	SRAM X-5, 9-speed	SRAM X-4, 8-speed	-	-
Cassette	SRAM PG-950, 11-28T	SRAM PG-830, 11-32T	-	-
Rear hub	Vee-Oh OEM, 36H sealed bearings	Vee-Oh OEM, 36H sealed bearings	Revolt SS OEM, 36H sealed bearings, 13T driver	Revolt SS OEM, 36H sealed bearings, 10T driver
Front hub	Revolt 20 OEM, 36H sealed bearings	Dee-Force, 36H sealed bearings	Revolt 20 OEM, 36H sealed bearings	Revolt 20 OEM, 36H sealed bearings
Spokes	steel, brass nipples	steel, brass nipples	steel, brass nipples	steel, brass nipples
Rims	Raider, 36H, double wall	Raider, 36H, double wall	Raider, 36H, double wall	Raider, 36H, double wall
Tires	Kenda Nevegal, 26x2.35"	Kenda Nevegal, 26x2.35"	Kenda SBE, 26x2.1"	Kenda SBE, 26x1.95"
Seat	Ivy, Pivotal	Ivy, Pivotal	Ivy, Pivotal	Lite Combo
Seat post	Fusion L, 31.6x300mm	Fusion L, 31.6x300mm	Fusion, 27.2x200mm	-
Seat clamp	34.9mm, alu 6061	34.9mm, alu 6061	31.8mm, alu 6061	31.8mm, alu 6061
Brake/Lever	Avid Elixir 5 203mm rotor, front/rear	Promax DSK-907 203mm rotor, front/rear	Avid Elixir 1 160mm rotor, front/rear	Avid Elixir 1 160mm rotor, rear
Weight	15.5kg	17.5kg	13.5kg	11.85kg

GAMER 26	GAMER 24	TWO6PLAYER 2013	QUINNIE	QUANTUM
shiny black / shiny blue alu 6061	metallic red alu 6061	shiny red alu 6061	matt black 100% Cr-Mo 4130	matt black Cr-Mo 4130
RST Dirt T, 100mm travel, 3/8" axle	RST Dirt T, 100mm travel, 3/8" axle	Suntour Duro DJ D 100mm travel, 3/8" axle	Suntour DURO-DJ RC AIR 100mm travel, 20mm axle	rigid fork Cr-Mo 4130 steerer tube
-	-	-	-	-
Storm, cr-mo 4130 22.2mm/700mm	Storm, cr-mo 4130 22.2mm/700mm	Ice, alu 6061 25.4mm/700mm	Ice, alu 6061 25.4mm/700mm	Ice, alu 6061 25.4mm/700mm
Block	Block	Shamann	Shamann	Shamann
Fury OEM 2014, alu 6061 22.2mm/35mm	Fury OEM 2014, alu 6061 22.2mm/35mm	Fury OEM 2013, alu 6061 25.4mm/35mm	Fury OEM 2013, alu 6061 25.4mm/35mm	Fury OEM 2013, alu 6061 25.4mm/35mm
Neco, integrated tapered, sealed bearings	Neco, integrated tapered, sealed bearings	solid steel cups strong loose ball bearings	Neco, integrated 45°/45° sealed bearings	Neco, integrated 45°/45° sealed bearings
Samox AF12-D32S MTB alu 6061, 175mm crankarms	Samox AF12-D32S MTB alu 6061, 165mm crankarms	Chukka OEM, 3-pcs tubular Cr-Mo 4130, 175mm crankarms	Samox, 3-pcs tubular Cr-Mo 4130, 175mm crankarms	Chukka OEM, 3-pcs tubular Cr-Mo 4130, 175mm crankarms
Samox SAX-J21ST square BB	Samox SAX-J21ST square BB	Euro 19mm sealed bearings	Spanish 19mm sealed bearings	Spanish 19mm sealed bearings
32T, steel	32T, steel	32T, steel	Zulu 25T, alu 7075	32T, steel
-	-	-	-	-
Core 1/8"	Core 1/8"	Core 1/8"	Core 1/8"	Core 1/8"
Candy, OEM plastic pedals ball bearings	Candy, OEM plastic pedals ball bearings	Stream OEM, molded pins	Stream, replaceable pins	Stream OEM, molded pins
-	-	-	-	-
-	-	-	-	-
-	-	-	-	-
male singlespeed, 36H sealed bearings, 14T freewheel	male singlespeed, 36H sealed bearings, 14T freewheel	male singlespeed, 36H sealed bearings, 14T freewheel	Revolt SS OEM, 36H sealed bearings, 10T driver	male singlespeed, 36H sealed bearings, 14T freewheel
Revolt 20 OEM, 36H sealed bearings	3/8"" male axle, 36H sealed bearings	3/8"" male axle, 36H sealed bearings	Revolt 20 OEM, 36H sealed bearings	3/8"" male axle, 36H loose ball bearings
steel, brass nipples	steel, brass nipples	steel, brass nipples	steel, brass nipples	steel, brass nipples
Raider, 36H, double wall	Weinmann A532, 36H, single wall	Raider, 36H, double wall	Raider, 36H, double wall	Shining, 36H, double wall
Kenda K-Rad, 26x1.95"	Kenda K-Rad, 24x2.3"	Kenda K-Rad, 26x2.3"	Kenda SBE, 26x1.95"	Kenda K-Rad, 26x2.3"
Lite Combo	Lite Combo	Lite Combo	Lite Combo	Lite Combo
-	-	-	-	-
31.8mm, alu 6061	31.8mm, alu 6061	31.8mm, alu 6061	integrated	integrated
Promax DSK-310 160mm rotor, rear	Promax DSK-310 160mm rotor, rear	Promax DSK-320 160mm rotor, rear	Avid Elixir 1 160mm rotor, rear	Alhonga V-Brake
13.7kg	13.6kg	13.5kg	12.2kg	13.2kg

DART MOOR BIKES

THE TEAM



We are glad not only to manufacture great parts, but also to be a part of the gravity mountain biking world. We support dozens of athletes in Europe, United States and Canada. We are proud of long partnership with **Szymon Godziek** - the best-known rider in the history of Polish gravity biking, who has been voted as the **FMBA Athlete of the Year 2013** or **Tomas Zejda** - the best Czech dirt jump/slopestyle rider and **top 20** in the **FMB World Tour Overall Ranking** in previous two years.

Our partnership is not only pointed at best of the best, we are also very dedicated to supporting people, who are involved in improving the gravity biking scene – instructors, testers, trails builders. Therefore, we are able to constantly participate in the development of the mountain biking world and we are aware of the demands and needs that arise on the biking market.

ROOTS

ROOTS

The Roots is a major addition to the Dartmoor gravity family. Dedicated for going big and rough, this frame is designed for the downhill freeriders that are rooted to the mountains. With 200mm of the progressive rear travel, this baby will transport you over any rock garden you can throw at it, while being stable enough to pull that sick whip on an A-Line. The design is well proven and is priced well to make this an ideal choice for anyone looking to custom build a sick rig.

On the technical side, the Roots can be run with either 26" or 27.5" wheels with the rear running 150x12mm axle, the BB is 73mm, ISCG-05 and tapered IS42/IS52 standard headset. The rear shock is a 222mm/69mm, seat post size is a beefy 31.6mm and its equipped with the rear post mount for the disc brake (PM 160mm). During many months of testing the Roots has been run with both 180mm and 200mm forks and both felt great, the choice is yours. Roots will be equipped with a standard cable routing plus stealth cable routing for a dropper seat post and rear derailleur in chainstay section. The frame comes in an unforgettable Red Devil color scheme, achieved by using red clear coating over the polished aluminium, along with black decals.

Available options: w/o shock; w/RS Kage RC coil shock.

Frame travel: 200mm; Shock size: 222/69mm; Bushing size: 22.2x8mm.

Weight: 3.2kg (w/o shock).



	Reach (mm)	Stack (mm)	ST (mm)	TT (mm)	eTT (mm)	CS (mm)	HT (mm)	HT angle	eST angle	BB drop (mm)	WB (mm)	Wheel size	Fork travel (mm)	Hub size (mm)	Headset type (S.H.I.S)	BB type (mm)	Post diam. (mm)	Clamp diam. (mm)	Brake mount
ROOTS L	430	592	410	558	590	430	115	64°	75°	-5	1200	27.5"/26"	180-200	150x12	IS42/IS52	Euro 73	31.6	34.9	PM 160 mm
ROOTS S	400	592	410	520	560	430	115	64°	75°	-5	1170	27.5"/26"	180-200	150x12	IS42/IS52	Euro 73	31.6	34.9	PM 160 mm

* geometry calculated for the fork with 200mm travel

WISH

WISH

Wish 2014 is the second generation of our most versatile frame in our full suspension category. It has been dirt jumped, ridden all mountain and abused on the steepest of DH tracks. For 2014 the frame now gets 135x12mm bolt-through dropouts plus larger sealed bearings at the rear pivot, this makes the rear even stiffer than before. Other changes are the ability to run both 26" and 27.5" wheels and geometry changes makes climbing much easier now. We developed new and stronger hydroformed down tube plus a revised head tube, which now takes our new integrated headset. For those wanting a more all mountain frame, the seat tube is now longer but the top tube is still low, this is made possible with the introduction of a new brace tube between the top and seat tubes.

As for the technical side, Wish 2014 runs a 73mm standard Euro BB, ISCG-05, rear shock of 215mm/63mm, 31.6mm seat post, post mount brake adapter (PM 160mm) and tapered headsets in IS42/IS52 standard. Wish will be equipped with a standard cable routing plus stealth cable routing for a dropper seat post and rear derailleur in chainstay section. The perfect bike park frame just expanded its comfort zone to the high mountains!

Available options: w/o shock; w/RS Monarch Plus High Volume R air shock; w/RS Kage R coil shock.

Frame travel: 170mm; Shock size: 215/63mm; Bushing size: 22.2x8mm; Weight: 3.1kg (w/o shock).



	Reach (mm)	Stack (mm)	ST (mm)	TT (mm)	eTT (mm)	CS (mm)	HT (mm)	HT angle	eST angle	BB drop (mm)	WB (mm)	Wheel size	Fork travel (mm)	Hub size (mm)	Headset type (S.H.I.S)	BB type (mm)	Post diam. (mm)	Clamp diam. (mm)	Brake mount
WISH L	440	584	431	565	582	419	115	65°	76°	-4	1180	27.5"/26"	160-180	135x12	IS42/IS52	Euro 73	31.6	34.9	PM 160 mm
WISH S	410	584	406	535	552	419	115	65°	76°	-4	1150	27.5"/26"	160-180	135x12	IS42/IS52	Euro 73	31.6	34.9	PM 160 mm

* geometry calculated for the fork with 170mm travel

SHINE

SHINE

One of the best full suspension slopestyle frames offering the riding comfort of suspension frame with modern geometry and stiffness of a dirt jump hardtail. Made of butted and heat treated 7005 aluminium. This frame takes the impact out of the biggest jumps, as well as offers a great ride to those wanting a play bike to hack in the woods. It has to be ridden to see just how cool and versatile this frame is. BB-centric pivot and horizontal dropouts lets you run the perfect single speed drive train without effecting the chain length. Simple and trouble-free suspension design with multipoint linking and big bearings on the BB make the construction as stiff as the typical DJ hardtail frame. Shine has already proved that it's possible to build a very light slopestyle/dirt jump bike. You could see this frame in action at the biggest slopestyle events like Crankworx Whistler, Claymore Challenge or 26Trix.

Frame travel: 100mm; Shock size: 190x50mm; Bushing size: 22.2x8mm; Weight: 2.85kg (w/o shock).
Available options: w/o shock; w/X-Fusion Glyde RPV coil shock; w/X-Fusion O2 RCX air shock; w/Rock Shox Monarch R air shock.

	Reach (mm)	Stack (mm)	ST (mm)	TT (mm)	eTT (mm)	CS (mm)	HT (mm)	HT angle	eST angle	BB drop (mm)	WB (mm)	Wheel size	Fork travel (mm)	Hub size (mm)	Headset type (S.H.I.S)	BB type (mm)	Post diam. (mm)	Clamp diam. (mm)
SHINE	387	565	305	554	564	403	115	67.5°	-	16	1081	26"	100-140	135x10	EC34/ZS49 EC34/EC49	Euro 73	27.2	31.8

* geometry calculated for the fork with 140mm travel





CODY

CODY

Most of you have already seen our limited edition Petrol finish Cody frame spy shot from the Eurobike 2013. The most talked about Dirt Jumping construction of the last summer, due to it's very unique and expensive coating. It is a chemical process we call petrol chrome plating which is reflecting the vision of petrol splitted into water. That's why we put it along with our most reliable and contest winning frame: Dartmoor Cody.

This technical miracle its made of multiple butted, seamless Japanese Cr-Mo 4130 steel tubes. All the tubes are heat treated before welding. With super smooth dropouts, hydroformed chainstay and increased thickness in the most sensitive areas this frame, after some little changes in geometry for 2014 is plain sick. The new BB tube has now the hourglass shape and it is 10mm lower than it was in 2013. There is also a new integrated seat clamp.

What does all this mean? Now the frame feels more stable in the air and we've heard that its easier to pull the hardest tricks on it. Furthermore it will be available also in the Miami Vice red-yellow color scheme.

Weight: 2,26kg.

	Reach (mm)	Stack (mm)	ST (mm)	TT (mm)	eTT (mm)	CS (mm)	HT (mm)	HT angle	eST angle	BB drop (mm)	WB (mm)	Wheel size	Fork travel (mm)	Hub size (mm)	Headset type (S.H.I.S)	BB type (mm)	Post diam. (mm)	Clamp diam. (mm)
CODY	400	558	300	570	-	380	110	69°	-	15	1040	26"	80-110	135x10	IS42/IS42	Spanish 68	27.2	integr.

* geometry calculated for the fork with 100mm travel



QUINNIE

QUINNIE

The best middle range dirt jump/street frame for 26" wheels, perfect for all types of riders from amateur to pro. Made of butted, seamless Japanese Cr-Mo 4130 steel tubes. The Quinnie combines high quality level, modern design and perfect geometry. It has internal gusset under the head tube, seat clamp integrated in the seat tube and gyro tabs holes in the head tube.
Weight: 2.4kg.



BRONX V.2

Lightweight fork made of triple butted Cr-Mo 4130 steel. Post-weld heat-treated. Molded bottom section of the legs. Steerer tube and legs machined inside for weight reduction. 1-piece CNC machined steerer tube. With integrated crown race to fit 45/45 Campy style bearings. Top cap made of 7075-T6 aluminium.
Height: 430mm. Steerer length: 180mm. Offset: 25mm.
Weight: 1.07kg.



FREAKY

FREAKY

Freaky stays with us for 2014 with the new polished raw and matt black options! Designed to share the love of street and park riding styles, Freaky will get you through the hardest gaps and drops you can think of. Its geometry stays the same as in the 2013, balanced between BMX and MTB frames. With a rear triangle of 365mm, seat tube of 255mm and the wheel base of 966mm, this is simply a trick machine! Meant to be ridden with a rigid fork, Spanish BB and the removable U-brake pivots it may be looks like a plus size BMX but with 24 or 26 inch wheels. If you need a reliable friend to bomb the streets or skateparks, go for a Freaky one!
Weight: 2.44kg.



GHETTO

This most advanced frame for technical street riding is our cr-mo steel proposition for 24 inches lovers. Ultra light, yet super strong construction adapted to the needs of those who enjoy getting through the city jungle in their way. For 2014 we removed the disc brake mount and exchanged it with the removable pivots to use with a U-brake. The whole frame is built using heat treated, multi butted Cr-Mo 4130 tubes. Designed for rigid forks like the Dartmoor Bronx and Spanish standard BB, building a sub 9kg is quite achievable. Perfect geometry makes this beats a real street riders dream bike.
Weight: 2.16kg.



	Reach (mm)	Stack (mm)	ST (mm)	TT (mm)	eTT (mm)	CS (mm)	HT (mm)	HT angle	eST angle	BB drop (mm)	WB (mm)	Wheel size	Fork travel (mm)	Hub size (mm)	Headset type (S.H.I.S)	BB type (mm)	Post diam. (mm)	Clamp diam. (mm)
QUINNIE	402	543	300	574	-	383	110	68.5°	-	0	1050	26"	80-110	135x10	IS42/IS42	Euro 68	27.2	integr.
GHETTO	390	507	270	546	-	360	110	70°	-	-24	988	24"	rigid 60-100	135x10	IS42/IS42	Spanish 68	27.2	integr.
FREAKY	418	510	255	555	-	365	110	72.5°	-	5	966	24"/26"	rigid	110x14	IS42/IS42	Spanish 68	25.4	integr.

* geometry calculated for the fork with: 100mm travel for Quinnie; 80mm travel for Ghetto; rigid fork for Freaky

BRONX

GHETTO

26PLAYER



TWO6PLAYER

What can we say about one of the most popular aluminium Dirt Jumping frames we have ever created, the Two6Player! It took a couple of years to work with every detail of this amazing frame but now it is perfect. From the pro riders to the weekend warriors – this frame suits everybody when it comes to having fun. That’s why we didn’t change the geometry for 2014. Chain stays of 385mm will help you with the future spins on the big sets of dirt or just a stylish 360’ at your home spot. You will be able to enjoy this beauty in the both Short (545mm) and Long (574mm) sizes with the brand new colors including Miami Vice, Oil Slick painted, matt black and shiny red. We are sure the Miami Vice red-yellow matt gradient Two6Player frame matched with the Revolt rims in the same color scheme will make Tomas Zejda’s bike a unique looking machine during the 2014 FMB events. Weight: 2.10kg.

	Reach (mm)	Stack (mm)	ST (mm)	TT (mm)	eTT (mm)	CS (mm)	HT (mm)	HT angle	eST angle	BB drop (mm)	WB (mm)	Wheel size	Fork travel (mm)	Hub size (mm)	Headset type (S,H,I,S)	BB type (mm)	Post diam. (mm)	Clamp diam. (mm)
TWO6PLAYER L	414	564	310	574	-	385	115	69°	-	20	1070	26"	90-130	135x10	EC34/ZS49 EC34/EC49	Euro 73	27.2	31.8
TWO6PLAYER S	385	564	310	545	-	385	115	69°	-	20	1040	26"	90-130	135x10	EC34/ZS49 EC34/EC49	Euro 73	27.2	31.8

* geometry calculated for the fork with 100mm travel



HANGER

Derailleur hanger for horizontal dropouts (for frames like Shine, Two6Player etc.). Made of alu 7075. CNC machined. For 10mm hub axle.



TWO4PLAYER

Lightweight Dirt Jump/Skatepark frame for 24" wheels. Made of butted and heat treated 7005 aluminium tubes. Two4Player is equipped with the new custom designed asymmetrical yoke and improved dropouts design for perfect matching the chainstay line. Double butted top tube with increased thickness in the head tube area. Head tube takes standard 1-1/8" headsets, machined internally for weight reduction. Please note: Two4Player should only be used with the suspension forks. Weight: 2.16kg.

	Reach (mm)	Stack (mm)	ST (mm)	TT (mm)	eTT (mm)	CS (mm)	HT (mm)	HT angle	eST angle	BB drop (mm)	WB (mm)	Wheel size	Fork travel (mm)	Hub size (mm)	Headset type (S,H,I,S)	BB type (mm)	Post diam. (mm)	Clamp diam. (mm)
TWO4PLAYER	394	539	300	546	-	370	105	69°	-	3	1016	24"	70-100	135x10	EC34/EC34	Euro 68	27.2	31.8

* geometry calculated for the fork with 100mm travel

HORNET



HORNET

The most popular frame of 2013, the Dartmoor Hornet is back and with some cool improvements to make it even better for all you hardcore riders. If you love to hit drops, wall rides and rough terrain on a hardtail bike, the Hornet is the frame for you. And now for the technical stuff: on the rear you will find a 135x12 through axle, the new hydroformed seatstays are stronger, stiffer and better looking for a proper abuse. Up front you now get a fully integrated headset, which are now shorter making it better for long travel forks, while giving a cleaner look. This frame is built for hardtail freeride and aggressive enduro . Being a more aggressive frame it comes in just two sizes: 16" and 18". The new geometry is designed to cope with the dynamic of the 27.5" wheels or the agility of the classic 26" wheels - both will fit very well !!
Weight: 2.3 kg (18"), 2.25 kg (16").

	Reach (mm)	Stack (mm)	ST (mm)	TT (mm)	eTT (mm)	CS (mm)	HT (mm)	HT angle	eST angle	BB drop (mm)	WB (mm)	Wheel size	Fork travel (mm)	Hub size (mm)	Headset type (S,H,I,S)	BB type (mm)	Post diam. (mm)	Clamp diam. (mm)
HORNET L	430	590	457	596	621	426	115	66°	73°	28	1160	27.5"/26"	120-160	135x12	IS42/IS52	Euro 73	31.6	34.9
HORNET M	400	590	406	576	587	426	115	66°	73°	28	1130	27.5"/26"	120-160	135x12	IS42/IS52	Euro 73	31.6	34.9

* geometry calculated for the fork with 160mm travel

HORNET 4X



HORNET 4X

Hornet 4X is the fusion between the stability and strength of the Dartmoor Hornet and the race proven geometry of our previous four-cross machine, the Dartmoor Phantom. On the construction side it will have the same new features as Hornet 2014, with a fully integrated low profile headset; new custom designed and stiffer chain and seat stays plus the introduction of a strong 135x12mm through axle. And all this has been achieved while keeping this race machine at a lightweight level. The 400mm chain stays and new super stiff rear triangle will make this bike amazing out of the gate, while being very snappy and agile to fight your way through the competition. The head angle points only one way, the finish line, plus the long top tube with 14" seat tube will suit the needs of the riders who shred them. For 2014 it will come in only one size and is compatible with 26" wheels.
Weight: 2.15 kg.

	Reach (mm)	Stack (mm)	ST (mm)	TT (mm)	eTT (mm)	CS (mm)	HT (mm)	HT angle	eST angle	BB drop (mm)	WB (mm)	Wheel size	Fork travel (mm)	Hub size (mm)	Headset type (S,H,I,S)	BB type (mm)	Post diam. (mm)	Clamp diam. (mm)
HORNET 4X	415	570	355	574	589	400	115	68°	73°	28	1076	26"	80-130	135x12	IS42/IS52	Euro 73	31.6	34.9

* geometry calculated for the fork with 100mm travel

TRAIL COMPONENTS



When it comes to learning about failures we know a lot. We have been braking a lot of stuff during the last decade of gravity riding but we have been learning even more from it! The road has been long and many times we find ourselves getting up and sweeping dirt out of our helmets but it was worth it. Now we can design bike parts that can survive the most critical situations and be reliable. The experience we have collected

is now a piece of the every single part from Dartmoor. For the upcoming seasons we want to share this knowledge with the different type of riding and that's how **Trail** components came to life. It is a new line of equipment of All Mountain/Enduro orientated parts with the background in gravity style. Now you can find more rim sizes, longer stems and very soon also new „no chainguide” chain rings!

PRIMAL



PRIMAL

Primal is our first All Mountain frame designed to run with 27.5" and 26" wheels. Built to meet the demands of the all mountain riders and those who want to try some enduro on the hardtail, this frame will be good for those long day trips or just thrashing your local singletrack. This beauty comes in three sizes: 16" with a top tube effective length of 578mm, 17" with 598mm eTT and 18" with 618mm eTT. All sizes have chain stays of 425mm and 69 degrees head tube angle (all measured with a 140mm travel fork).

To compliment the sleek lines of this frame, with its smooth welds and two-tone paint, we have included stealth cable routing for those wishing to fit a dropper seat post, plus cable guides that sit flush. Like most of the new 2014 Dartmoor frames the Primal comes with the new integrated haedset built into the tapered head tube. This frame will allow you to Ride Your Way for sure!

Standover for 140mm fork travel and 27.5" wheels: 803mm (18"), 792mm (17"), 780.5mm (16"). Weight: 2.1 kg (18"), 2.05 kg (17"), 2 kg (16").

	Reach (mm)	Stack (mm)	ST (mm)	TT (mm)	eTT (mm)	CS (mm)	HT (mm)	HT angle	eST angle	BB drop (mm)	WB (mm)	**Stand -over (mm)	Wheel size	Fork travel (mm)	Hub size (mm)	Headset type (S.H.I.S)	BB type (mm)	Post diam. (mm)	Clamp diam. (mm)
PRIMAL L	430	565	457	591	618	425	115	68°	71°	34	1120	803	27.5"/26"	120-160	135x10	IS42/IS52	Euro 73	31.6	34.9
PRIMAL M	410	565	432	573	598	425	115	68°	71°	34	1100	792	27.5"/26"	120-160	135x10	IS42/IS52	Euro 73	31.6	34.9
PRIMAL S	390	565	406	559	578	425	115	68°	71°	34	1080	780	27.5"/26"	120-160	135x10	IS42/IS52	Euro 73	31.6	34.9

* geometry calculated for the fork with 140mm travel

** standover calculated for 27.5" wheels

PRIMAL 29



PRIMAL 29

Primal 29 is our new flagship 29er frame. 29ers bring a new feel to your ride - smoother, faster and quicker while still delivering when you hit your favourite trails. We offer two sizes - Medium with 17" seat tube and 590mm effective top tube and Large with 19" seat tube and 620mm eTT.

Like its smaller brother, the Primal 29 offers stealth cable routing for those wishing to run a dropper post and smooth flush cable guides. The frame features the short chain stays and a proper head tube angle great for climbing, plus tapered head tube for integrated headset and a curved top tube with a standover height under 800mm to avoid any nasty accidents.

Standover for 140mm fork travel: 785mm (19"), 766.5mm (17"). Weight: 2.15 kg (19"), 2.1 kg (17").

	Reach (mm)	Stack (mm)	ST (mm)	TT (mm)	eTT (mm)	CS (mm)	HT (mm)	HT angle	eST angle	BB drop (mm)	WB (mm)	Stand- over (mm)	Wheel size	Fork travel (mm)	Hub size (mm)	Headset type (S.H.I.S)	BB type (mm)	Post diam. (mm)	Clamp diam. (mm)
PRIMAL 29 L	420	600	483	582	620	437	115	68°	71°	49	1190	785	29"	100-140	135x10	IS42/IS52	Euro 73	31.6	34.9
PRIMAL 29 M	390	600	432	559	590	437	115	68°	71°	49	1160	766	29"	100-140	135x10	IS42/IS52	Euro 73	31.6	34.9

* geometry calculated for the fork with 140mm travel

GEO METRY

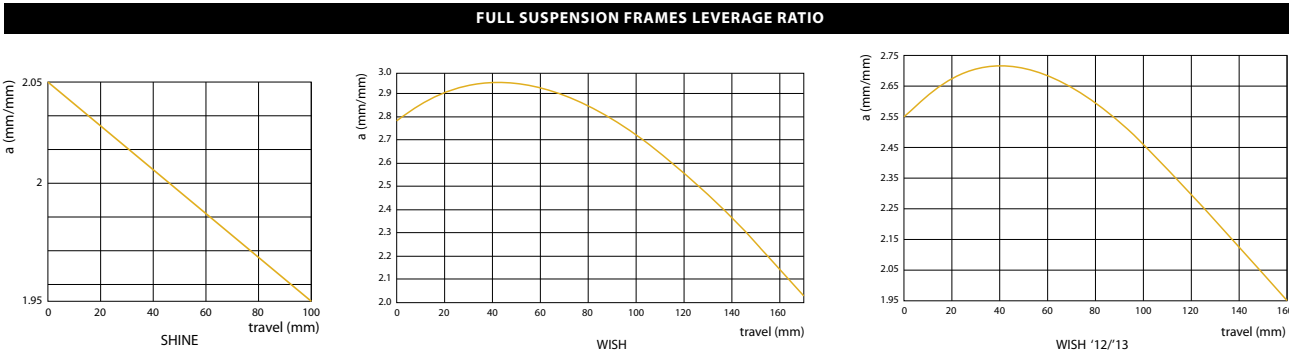
	*Calc. fork travel	Reach (mm)	Stack (mm)	ST (mm)	TT (mm)	eTT (mm)	CS (mm)	HT (mm)	HT angle	eST angle	BB drop (mm)	WB (mm)	**Stand -over (mm)	Wheel size	***Fork travel (mm)	Hub size (mm)	Headset type (S,H,I,S)	BB type (mm)	Post diam. (mm)	Clamp diam. (mm)	Brake mount
FRAMES AFTERMARKET																					
ROOTS L	200	430	592	410	558	590	430	115	64°	75°	-5	1200	-	27.5"/26"	180-200	150x12	IS42/IS52	Euro 73	31.6	34.9	PM 160mm
ROOTS S	200	400	592	410	520	560	430	115	64°	75°	-5	1170	-	27.5"/26"	180-200	150x12	IS42/IS52	Euro 73	31.6	34.9	PM 160mm
WISH L	170	440	584	431	565	582	419	115	65°	76°	-4	1180	-	27.5"/26"	160-180	135x12	IS42/IS52	Euro 73	31.6	34.9	PM 160mm
WISH S	170	410	584	406	535	552	419	115	65°	76°	-4	1150	-	27.5"/26"	160-180	135x12	IS42/IS52	Euro 73	31.6	34.9	PM 160mm
WISH 2013	160	403	576	343	559	556	425	115	66.5°	75°	12	1128	-	26"	160-180	135x10	EC34/ZS49 EC34/EC49	Euro 73	31.6	34.9	IS
SHINE	140	387	565	305	554	564	403	115	67.5°	-	16	1081	-	26"	100-140	135x10	EC34/ZS49 EC34/EC49	Euro 73	27.2	31.8	IS
HORNET L	160	430	590	457	596	621	426	115	66°	73°	28	1160	-	27.5"/26"	120-160	135x12	IS42/IS52	Euro 73	31.6	34.9	IS
HORNET M	160	400	590	406	576	587	426	115	66°	73°	28	1130	-	27.5"/26"	120-160	135x12	IS42/IS52	Euro 73	31.6	34.9	IS
HORNET 4X	100	415	570	355	574	589	400	115	68°	73°	28	1076	-	26"	80-130	135x12	IS42/IS52	Euro 73	31.6	34.9	IS
PRIMAL L	140	430	565	457	591	618	425	115	68°	71°	34	1120	803	27.5"/26"	120-160	135x10	IS42/IS52	Euro 73	31.6	34.9	IS
PRIMAL M	140	410	565	432	573	598	425	115	68°	71°	34	1100	792	27.5"/26"	120-160	135x10	IS42/IS52	Euro 73	31.6	34.9	IS
PRIMAL S	140	390	565	406	559	578	425	115	68°	71°	34	1080	780	27.5"/26"	120-160	135x10	IS42/IS52	Euro 73	31.6	34.9	IS
PRIMAL 29 L	140	420	600	483	582	620	437	115	68°	71°	49	1190	785	29"	100-140	135x10	IS42/IS52	Euro 73	31.6	34.9	IS
PRIMAL 29 M	140	390	600	432	559	590	437	115	68°	71°	49	1160	766	29"	100-140	135x10	IS42/IS52	Euro 73	31.6	34.9	IS
TWO6PLAYER L	100	414	564	310	574	-	385	115	69°	-	20	1070	-	26"	90-130	135x10	EC34/ZS49 EC34/EC49	Euro 73	27.2	31.8	IS
TWO6PLAYER S	100	385	564	310	545	-	385	115	69°	-	20	1040	-	26"	90-130	135x10	EC34/ZS49 EC34/EC49	Euro 73	27.2	31.8	IS
TWO4PLAYER	100	394	539	300	546	-	370	105	69°	-	3	1016	-	24"	70-100	135x10	EC34/EC34	Euro 68	27.2	31.8	IS
CODY	100	400	558	300	570	-	380	110	69°	-	15	1040	-	26"	80-110	135x10	IS42/IS42	Spanish 68	27.2	integr.	IS
QUINNIE	100	402	543	300	574	-	383	110	68.5°	-	0	1050	-	26"	80-110	135x10	IS42/IS42	Euro 68	27.2	integr.	IS
GHETTO	80	390	507	270	546	-	360	110	70°	-	-24	988	-	24"	rigid 60-100	135x10	IS42/IS42	Spanish 68	27.2	integr.	pivots
FREAKY	rigid	418	510	255	555	-	365	110	72.5°	-	5	966	-	24"/26"	rigid	110x14	IS42/IS42	Spanish 68	25.4	integr.	pivots

	*Calc. fork travel	Reach (mm)	Stack (mm)	ST (mm)	TT (mm)	eTT (mm)	CS (mm)	HT (mm)	HT angle	eST angle	BB drop (mm)	WB (mm)	**Stand -over (mm)	Wheel size	***Fork travel (mm)	Hub size (mm)	Headset type (S,H,I,S)	BB type (mm)	Post diam. (mm)	Clamp diam. (mm)	Brake mount
FRAMES IN COMPLETE BIKES																					
WISH PRO	160	403	576	343	559	556	425	115	66.5°	75°	12	1128	-	26"	90-130	135x10	EC34/EC49	Euro 73	31.6	34.9	IS
WISH	160	403	576	343	559	556	425	115	66.5°	75°	12	1128	-	26"	90-130	135x10	EC34/EC49	Euro 73	31.6	34.9	IS
SHINE	140	387	565	305	554	564	403	115	67.5°	-	16	1081	-	26"	70-100	135x10	EC34/ZS49	Euro 73	27.2	31.8	IS
TWO6PLAYER PRO	100	412	566	310	574	-	385	115	68°	-	18	1059	-	26"	80-110	135x10	EC34/ZS49	Euro 73	27.2	31.8	IS
GAMER 26	100	403	579	354	557	-	385	115	70°	-	25	1036	-	26"	80-110	135x10	IS42/IS52	Euro 73	27.2	31.8	IS
GAMER 24	100	388	562	325	540	-	370	115	70°	-	8.5	1006	-	24"	60-100	135x10	IS42/IS52	Euro 73	27.2	31.8	IS
QUINNIE	100	402	543	300	574	-	383	110	68.5°	-	0	1050	-	26"	rigid	135x10	IS42/IS42	Spanish 68	27.2	integr.	IS
QUANTUM	rigid	-	-	310	573	-	383	110	70°	-	-10	-	-	26"	rigid	135x10	IS42/IS42	Spanish 68	27.2	integr.	pivots

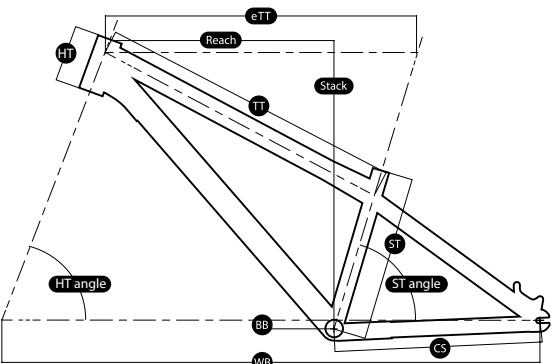
* fork travel used for calculating the geometry showed in this table (in millimetres)

** standover for Primal frame calculated for 27.5" wheels

*** recommended fork travel range (in millimetres)

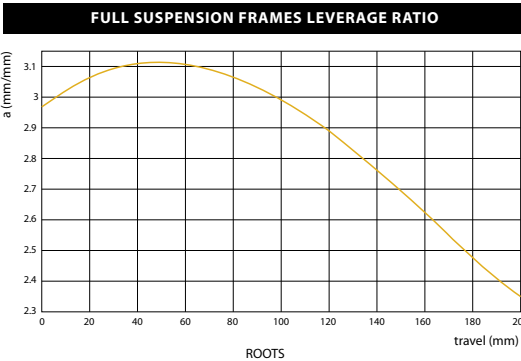


LEVERAGE



- Reach** - horizontal distance from BB center to HT center
- Stack** - vertical distance from BB center to HT top
- ST** - seat tube length (BB center to ST top)
- TT** - top tube length (actual)
- eTT** - top tube length (effective)
- CS** - chain stay length
- HT** - head tube length
- HT angle** - head tube angle
- eST angle** - seat tube angle (effective)
- BB drop** - bottom bracket height (BB center to WB)
- WB** - wheel base
- Standover** - vertical distance from the ground to TT top (in the middle of the TT length with wheels assembled)

MAXIMUM TIGHTENING TORQUE		
Frames	Roots/Wish shock bolts	10-12 Nm
	Roots/Wish main pivot axle over BB	10-12 Nm
	Roots/Wish main pivot axle TT/link	10-12 Nm
	Roots/Wish pivot axles SS/dropout	10-12 Nm
	Roots/Wish/Hornet/Hornet 4X 12mm frame axle	20 Nm
	Roots/Wish Post Mount brake assembling	10 Nm
	Shine shock bolts (5mm Allen key)	10-12 Nm
	Shine BB/swing arm clamp bolts (4mm Allen key)	6-8 Nm
	Gyro tabs	4 Nm
	Derailleur hanger	10 Nm
	Integrated seat post clamp	6 Nm
Fork	Cap	10 Nm
Crank	Rock main crank bolt	5 Nm
	Rock left arm tightening pinch bolts	10 Nm
	Chainring bolts in Rock cranks	10 Nm
	Thorn/Flare assembly tool	50 Nm
	Thorn/Flare crank bolts	15 Nm
	Keipo/Chukka Two crank bolts	10 Nm
	Keipo/Chukka Two tightening pinch bolts M6x18	12 Nm
BBs	Sprocket bolts in Thorn/Flare/Keipo/Chukka Two cranks	20 Nm
	Euro BB cups	40 Nm
Hubs	Vee-One/Vee-Two female bolts M6	10 Nm
	Riot/Sector/Sector Front/Vee-Oh tightening nuts	20 Nm
	Revolt Pro/Revolt/Razor/Razor Street 3/8" female bolts	25 Nm
	Razor Park M8 female bolts	18 Nm
	Disc brake rotor assembling	5 Nm
Stems	Rage/Micron/Funky/Fury bolts (all bolts)	8 Nm
	Trail frontplate bolts	6 Nm
	Trail steerer bolts	8 Nm
Pedals	Assembling in cranks	35 Nm
Pedals	Pins	5 Nm
	Top cap	8 Nm
Headsets	Assembling backplate to ISCG mounts in frame	6 Nm
Chain guides	Assembling cages to backplate	5 Nm
	Assembling bashguard to backplate in Trail chain guide	4 Nm
	Barend/lock ring	3 Nm
Grips		
Saddles	Pivotal bolt	18 Nm



THORN



THORN

2-pcs design cranks made of heat-treated Cr-Mo 4130 steel with 22mm spindle and 48 splines. RHD/LHD compatible. Two sprocket holes to fit all sprocket sizes. Small gusset to make the pedals assembly area stronger. Includes arms, spindle (welded to the right arm), 2 spindle bolts (alu 7075-T6 and Cr-Mo), 2 sprocket bolts (bigger one is hollow) and assembly/disassembly tool.

Available with two spindle lengths: 160mm (**Thorn MTB**) designed to work with Euro external bearings (like Dartmoor Euro eX BB 22mm) with 68mm or 73mm BB shells to create an extra strong and efficient combination with frames like Two6Player

150mm (**Thorn BMX**) perfectly working with Spanish or MID BB equipped frames as well as standard Euro BB to minimize number of required spacers for such kind of frames and keep correct chain line

Arms length: 170 mm. **Spindle:** 22mm hollow. **Splines:** 48. **Spindle bolt:** 5/8"x24T (8mm Allen key). **Weight:** 745g (with alu spindle bolt), 763g (with Cr-Mo spindle bolt).



FLARE

Light and strong 2.5-pcs cranks made of heat-treated Cr-Mo 4130 steel with 19mm spindle and 48 splines. RHD/LHD compatible. Two sprocket holes to fit all sprocket sizes. Small gusset to make the pedals assembly area stronger. Includes arms, spindle (pressed into the right arm), Cr-Mo spindle bolt, 2 sprocket bolts (bigger one is hollow), assembly tool.

Arms length: 170 mm. **Spindle:** 19mm hollow. **Splines:** 48. **Spindle bolt:** M12x1mm (6mm Allen key). **Weight:** 814g.

KEIPO



KEIPO EX

Keipo is one of our most popular BMX cranks but Keipo eX is still not as well recognized as it should be. Do you have an MTB frame with Euro BB shell - like Two6Player - and have faced many problems with weak Euro bearings? That is because typical Euro BB standard has too small bearings which are often crushed during the high intensity riding like street or dirt jumping.

Keipo eX brings you a solution to this problem. With much bigger bearings offered by the external Euro bearings, you get the strength of a Spanish BB while keeping the ease of fitting any normal Euro bottom bracket.

No matter if you have a 68mm or 73mm Euro BB shell in your frame you can trust Keipo eX will cope with everything you can chuck at them.

Arms length: 175m. **Spindle:** 19mm hollow. **Spindle length:** 148mm. **Splines:** 16. **Weight:** 995g (including Euro eX BBs).



CHUKKA TWO

3-pcs design reliable, entry level cranks made of 100% Cr-Mo 4130 steel seamless tubes. Includes arms, spindle, Cr-Mo spindle bolts, sprocket bolt and pinch bolts.

Arms length: 175 mm. **Spindle:** 19mm. **Splines:** 8. **Weight:** 1100g.



KEIPO

3-pcs design cranks made of heat-treated 100% Cr-Mo 4130 steel. RHD/LHD compatible. Two sprocket holes to fit all sprocket sizes.

Small gusset to make the pedals assembly area stronger. Includes arms, spindle, Cr-Mo spindle bolts, 2 sprocket bolts and pinch bolts. Alu spindle bolts available as separate spare parts.

Arms length: 175 mm. **Spindle:** 19mm hollow. **Splines:** 16.

Spindle bolts: M12x1mm. **Pinch bolts:** M6x1mm. **Weight:** 835g.

BOTTOM

EURO

Euro standard bottom bracket bearings with alu cups. For 2014 we will offer Pro Series with top quality bearings and refined cones that reduce the amount of spacers needed for installation and reliable Intro Series for the entry level riders with affordable price. Two inner sleeves for 68mm and 73mm bottom bracket shells and a set of alu spacers included.



PRO SERIES

Diameter: 19mm, 22mm.
Weight: 127g (19mm), 93g (22mm).



INTRO SERIES

Diameter: 19mm.
Weight: 142g.



PRO SERIES

Diameter: 19mm, 22mm.
Weight: 117g (19mm), 86g (22mm).



INTRO SERIES

Diameter: 19mm.
Weight: 135g.



PRO SERIES

Diameter: 19mm, 22mm.
Weight: 168g (19mm), 154g (22mm).



INTRO SERIES

Diameter: 19mm.
Weight: 184g.

SPANISH

Spanish standard bottom bracket bearings. For 2014 we will offer Pro Series with top quality bearings and refined cones that reduce the amount of spacers needed for installation and reliable Intro Series for the entry level riders with affordable price. Two inner sleeves for 68mm and 73mm bottom bracket shells and a set of alu spacers included.

MID

MID standard bottom bracket bearings. For 2014 we will offer Pro Series with top quality bearings and refined cones that reduce the amount of spacers needed for installation and reliable Intro Series for the entry level riders with affordable price. Two inner sleeves for 68mm and 73mm bottom bracket shells and a set of alu spacers included.

STAR



STAR

The all new Star sprocket will really set off your dream build, with its cool flowing lines lovingly CNC machined from a block of 7075 aluminium. This high end sprocket with 8 spokes design will come in a set with alu adapters for both most popular spindle diameters. **Size:** 25T, 28T, 33T. **Teeth:** 1/8". **Bore:** 15/16". **Thickness:** 6mm. **Adapter:** 19mm and 22mm included. **Weight:** 70g (25T); 75g (28T); 97g (33T).



PEACOCK

Peacock sprocket is a perfect example of the affordable parts from our new collection which will not ruin your budget but will give you a comfort of riding the safe and tested bike stuff. The Peacock is a strong aluminium sprocket made of the stamping mold with CNC machined teeth. **Size:** 25T, 28T. **Teeth:** 1/8". **Bore:** 15/16". **Thickness:** 6.4mm. **Adapter:** 19mm included. **Weight:** 78g (25T); 84g (28T).

TRANCE

Fully CNC machined sprocket made of 7075-T6 aluminium with 8 spokes design. It comes in a set with alu adapters for both most popular spindle diameters. **Size:** 23T, 25T, 28T. **Teeth:** 1/8". **Bore:** 15/16". **Thickness:** 6mm. **Adapter:** 19mm and 22mm included. **Weight:** 56g (23T), 65g (25T), 90g (28T).

BRACKETS

PEACOCK

ROCK



ROCK

New MTB cranks in our collection which will fit well our new Hornet and Primal frames. 2-pcs construction cranks with an integrated 24mm axle make them trustworthy and trouble-free in every condition. The 10-splines design combined with 2-bolt left arm guarantees a really strong connection.

They come with a dedicated 36T aluminium chainring and an external bottom bracket fully compatible with the Shimano standard and frames with 68mm or 73mm BB shells. If you look for the entry level MTB cranks that will not ruin your budget and will look really cool in your bike - Rock is for you !

Arms length: 175 mm. **Spindle:** 24mm. **Splines:** 10. **Spindle bolt:** M18xP1.0. **Weight:** 915g (without external bearings).



DISCO

Fully CNC machined small MTB chainring made of 7075-T6 aluminium. For those who use driver hubs (9T-11T) but prefer to keep lightweight MTB cranks.

Size: 25T. **BCD:** 64mm. **Thickness:** 5mm. Teeth: 1/8". **Weight:** 45g.

TOTEM

Lightweight MTB chainring made of high quality 7075-T6 aluminium. Fully CNC machined according to our custom design. Up to 30%-40% lighter than 6061 aluminium chainrings.

Size: 32T, 34T, 36T, 38T. **BCD:** 104mm. **Thickness:** 4mm. **Teeth:** 3/32". **Weight:** 40g (32T), 50g (34T), 63g (36T), 79g (38T).



TRAIL



TRAIL

Chain guides do not need to cost more than your whole drive train. Lightweight and durable Trail chain devices are the perfect examples of this. They are built for the proper FR and DH abuse. With a new aluminium body plus the ability to bolt on a bashguard, this guide will take care of things when you hit the trails! Cages are compatible with 10-speed drivetrains.

It will be available in two options: Trail One including bashguard and Trail Two without bashguard but ready to add it. BB adapter is not included just available as spare part. As spares you can buy also: upper/bottom cage, bashguard with alu bolts and backplates.

Size: 32T-42T. **Thickness:** 4mm.

Weight (Trail One): 185g (ISCG-OLD) / 189g (ISCG-05).

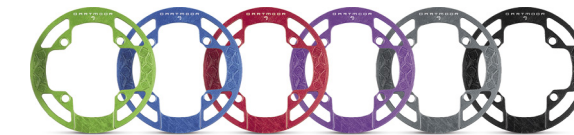
Weight (Trail Two): 136g (ISCG-OLD) / 143g (ISCG-05).



KEEPER

The Keeper does what is says on the box, it keeps the chain on. It is a simple idea for those who want to run a single ring. Compatible with the 31.8 and 34.9 mm seat tube standards would be the perfect match for those who rock one ring in the front and many gears in the back of their bikes.

Seat post diam.: 31.8mm/34.9mm. **Weight:** 44g.



CONQUEST

Ultralight bashguard made of 4mm thick aluminium alloy. With cuts in the body for weight reduction.

Thickness: 4mm. **Size:** 36T-38T. **Weight:** 75g.

SIMPLE



Single lower arm chain guide with CNC holes pattern in backplate for weight reduction. Backplate made of aluminium. Roller with sealed bearing. Together with bashguard may be used for double chainring drive. BB adapter is not included.

Thickness: 3mm. **Weight:** 85g (ISCG-OLD), 95g (ISCG-05).

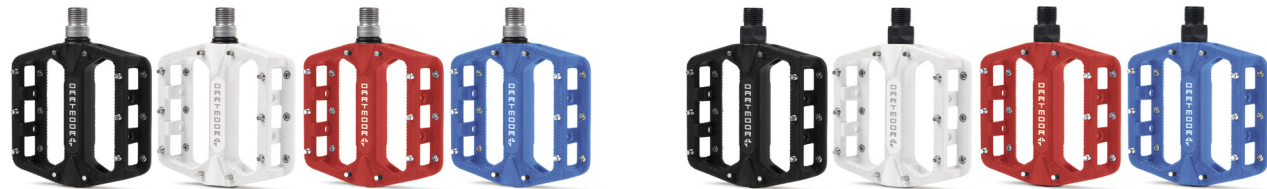
FEVER V.2



FEVER V.2

Ultra light pedals made of cold forged and CNC machined aluminium. Custom body shape with slim, flat profile. Cr-mo steel axle. 2 sealed bearings and DU-bushing for perfect and smooth rotation. They come now with the extended axle to increase the Q-factor and riding comfort. Tightened with 15mm wrench or 8mm Allen key. Fevers come with 8 removable, black pins per side.

Height: 16mm. **Platform size:** 90x100mm. **Weight:** 395g.



STREAM PRO

Lightweight alu die casted pedals with perfect grip and strong body design. Cr-mo steel axle. Sealed bearing and DU-bushing. 10 pins per side (6 removable).

Height: 18mm. **Platform size:** 90x95mm. **Weight:** 445g.

STREAM

Lightweight alu die casted pedals with perfect grip and strong body design. Cr-mo steel axle. Ball bearings. 10 pins per side (6 removable).

Height: 18mm. **Platform size:** 90x95mm. **Weight:** 440g.

COOKIE

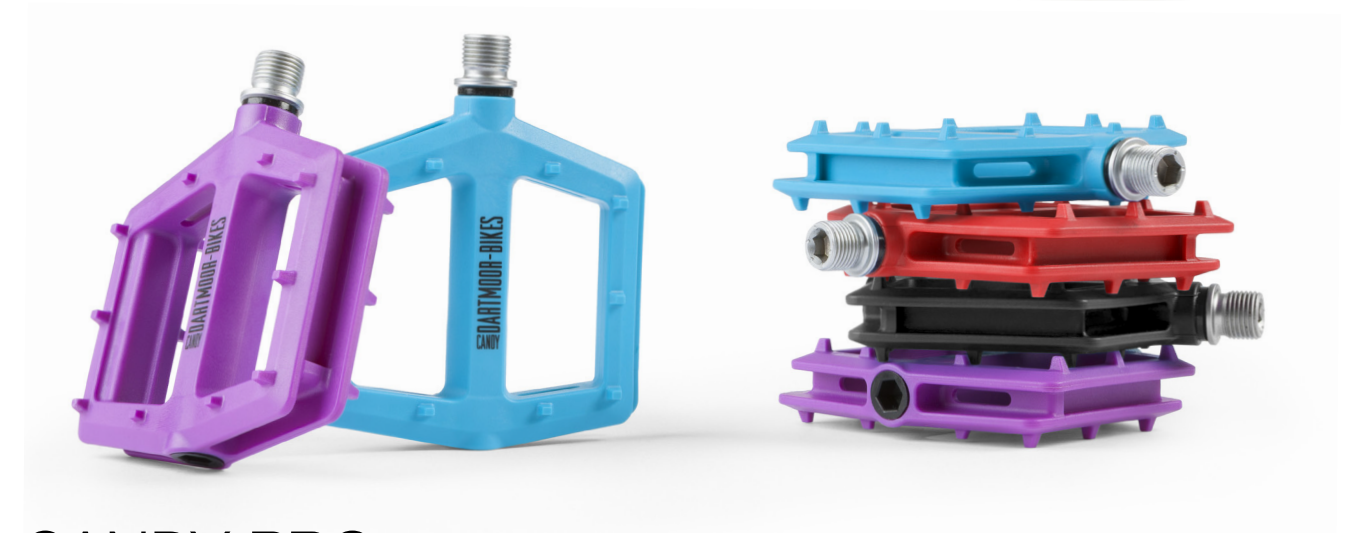
COOKIE

Lightweight pedals made of nylon. Cr-mo steel axle. Ball bearings. Knurled surface and 12 molded pins per side for maximum traction.

Height: 23mm.

Platform size: 90x95mm.

Weight: 315g.



CANDY PRO

Plastic pedals got their bad reputation in the MTB scene due to the low reliability and crappy bearings combined with the high profile design. But now it changed with the Candy Pros! These nylon pedals look different from the first glance. Starting with a low, thin profile, sealed bearings and shark-tooth pins that will give a firm grip for every riding shoe.

Why did we use sealed bearings in “meant to be cheap” pedals? Well, it is easier to change just the nylon platform rather than dumping the whole construction. With Candy Pros you can do it even while your pedal is installed in the crank arm! Just take away the broken platform and put on a new one. We will have separately platforms in a full range of colors. If you are looking for a good, long lasting lightweight set in an affordable price – go for them!

Height: 18.5mm. **Platform size:** 111x105mm. **Weight:** 270g.

CORE

CORE LIGHT

Lightweight nickel-plated chain with hollow pins and drilled side plates. Masterlink included. Nano-coated color options.

Length: 102 links. **Width:** 1/8".

Weight: 226g (for 72 links).



CORE

Strong chain with drilled top side plates. Masterlink included. Painted color options.

Length: 102 links. **Width:** 1/8".

Weight: 276g (for 72 links).



CUTTER

The Cutter chain is our new halflink chain. Designed to make getting the correct chain length on horizontal dropouts much easier. Nano-coated color options included.

Length: 102 links. **Width:** 1/8". **Weight:** 319g (for 72 links).

REVOLT

REVOLT

The Revolt is in its second year now and has proved to be a great rim. This hi-end gravity rim has our custom designed profile to cope with the most demanding requirements of Downhill, Freeride, Enduro, Dirt Jump and Street riding. Made using top quality 6066-T6 aluminium with a super strong sleeved joint connection.

The range is now increased to include the popular 27.5" diameter, which will have the increased side wall thickness to make them stronger for those who ride with lower pressure in their tyres. The new red-yellow Miami Vice color scheme will be available in the 26" size to match the Cody and Two6Player frames in the same finish.

Size: 27.5", 26", 24". **Outer width:** 33.5mm. **Inner width:** 27mm. **Height:** 22mm. **ERD:** 567mm (27.5"), 534mm (26"), 482mm (24"). **OSB:** 1.7mm.

Holes: 36, 32. **Weight:** 565g (27.5"), 525g (26"), 465g (24").



RAIDER



RAIDER

Very popular lightweight rim for Dirt Jump, Street, 4X, Enduro, Freeride and Downhill. Made of 6061 aluminium. Double walls with eyelets. Disc brake only.

Size: 27.5", 26", 24", 20". **Outer width:** 31.4mm. **Inner width:** 24mm. **Height:** 21mm. **ERD:** 562mm (27.5"), 537mm (26"), 485mm (24"), 384mm (20"). **OSB:** 1.5mm. **Holes:** 36, 32. **Weight:** 580g (27.5"), 550g (26"), 500g (24"), 405g (20").



FORTRESS

Popular strong rim for BMX, Dirt Jump and Street. Made of 6061 aluminium. Double walls with eyelets. Side wall for V-Brake and U-Brake.

Size: 26", 24", 20". **Outer width:** 32.4mm. **Inner width:** 25mm. **Height:** 21mm. **ERD:** 537mm (26"), 485mm (24"), 384mm (20"). **OSB:** 1.5mm. **Holes:** 36, 32. **Weight:** 670g (26"), 595g (24"), 485g (20").

FORTRESS

ROCKET

ROCKET

The Rocket is our new lighter rim aimed at the riders looking for a great value and strength without the weight penalty. It is designed to cope with many disciplines including enduro, all mountain, 4X and even the pumptrack. The 6061 aluminium rims have a pinned joint and come in three sizes: 26", 27.5" and 29" - all of them very light in their product range. Rim width is a reasonable 28mm allowing the tyre profile to work well helping you Rocket out of those tight turns.

Size: 29", 27.5", 26". **Outer width:** 28mm. **Inner width:** 22.4mm. **Height:** 18.3mm. **ERD:** 605mm (29"), 567mm (27.5"), 542mm (26"). **OSB:** 0.75mm. **Holes:** 32. **Weight:** 559g (29"), 526g (27.5"), 501g (26").



RIM TAPE

Long lasting rim tape made of impregnated nylon with Ride Your Way printed logo.

Size: 29"x24mm, 27.5"x26mm, 26"x26mm, 24"x26mm.



REVOLT PRO CASSETTE

REVOLT PRO CASSETTE

If we just say that Revolt Pro Cassette hubs feature 6 big double pawls located in the hub body plus 4 top quality sealed bearings, alu 7075 cassette body, push-in cones, hard anodized alu 7075 axle and perfect sealing secured by a set of o-rings and lip seals, this is all true and great but for sure that is not everything.

The Pro Cassette line supports all of the current mountainbiking standards - starting with the 135x10mm version (female version with 3/8" Cr-Mo hollow bolts) then 135/142x12mm version to use with a 12mm through axles in most of the modern Enduro/Freeride frames (there are two sets of cones included to easily convert the from 135mm to 142mm size) and 150x12mm version for Downhill machines, which can be easily converted to the 157x12mm standard after purchasing replaceable cones.

But that is still not enough for us - for 2014 we adapt our Pro line even better to the newest innovations. The hubs can now work with the new SRAM's XX1 drive - with our new XX1 compatible cassette body you will be able to convert any of the Revolt Pro hub to run 11 gears in your bikes to follow your beloved pros!



SRAM XX1 compatible cassette body

Hub-shell	alu 6061-T6	Cassette	alu 7075-T6 (necessary to use freewheel with alu spider), 9/10 speed
Axle	hard anodized alu 7075-T6	Pawls	6 pawls design with 6 individual, double springs
Bolts	hollow Cr-Mo 3/8"x24T, heat-treated for 17mm wrench or 8mm Allen key (only in 135x10mm female option)	Engagement points	30
Cones	alu 7075-T6, push-in (both sides)	Holes	36H, 32H
Bearings	4 precision sealed bearings (x2 in cassette, x2 in hub shell)	Weight	292g (150x12mm), 289g (135/142x12mm), 369g (135x10mm)

REVOLT CASSETTE

REVOLT CASSETTE

As the name suggests it is the cheaper version of the Revolt Pro series. The hub is all the same except for the engagement setup, this version has 24 engagement points, 6 pawls with a single spring and 4 bearings sealed in the aluminium body. This one is using a classic engagement design but still uses 7075 aluminium for the inner axle, cassette body and push-in cones. It is coming in two different standards - 135x10mm female version with 3/8" Cr-Mo hollow bolts and 135x12mm version to use with a 12mm through axles - perfectly fitting our new Hornet 2014, Hornet 4X and Wish 2014 frames. Furthermore 135x12mm version can be easily converted to 142x12mm standard - all you need is the set of longer cones that will be available separately. Revolt Cassette hubs are affordable products and one of the best in their class with only 278g in 135x12mm. Perfect for those who do not need the best drive transmission technology but still want to have a reliable friend spinning inside of their wheels!



Hub-shell	alu 6061-T6	Cassette	alu 7075-T6 (necessary to use freewheel with alu spider), 9/10 speed
Axle	hard anodized alu 7075-T6	Pawls	6 pawls with a single spring
Bolts	hollow Cr-Mo 3/8"x24T, heat-treated for 17mm wrench or 8mm Allen key (only in 135x10mm female option)	Engagement points	24
Cones	alu 7075-T6, push-in (both sides)	Holes	32H
Bearings	4 precision sealed bearings (x2 in cassette, x2 in hub shell)	Weight	279g (135x12mm), 352g (135x10mm)



REVOLT SINGLESPEED



REVOLT SINGLESPEED

Our affordable single speed rear driver hub will be available in 2014 with the new graphics design - following many of our other new items. The hub as before will feature 5 precision sealed bearings, 15mm axle and push-in cones made of aluminium 7075 and Cr-Mo 3/8" hollow bolts. New delivery which will come with new logo will be also equipped with 10T drivers with thicker teeth (1/8" standard). There will be also a very special and limited edition of Revolt Singlespeed hub in the Petrol finish matching Cody frame in the same finish.

REVOLT PRO SINGLESPEED

Absolutely hi-end ultralight MTB singlespeed rear hub. The hub is equipped with the 9T driver with patented Q-Lai drive transmission technology with 6 double independent pawls located in the hub body. This makes more space inside the driver for the bigger bearings. Together with the top quality bearings used inside the body this makes our Revolt Pro Singlespeed a really smooth rolling and super strong hub. The 9T size driver works perfectly with 23T sprockets in a super cool looking microdrive.

Hub-shell	alu 6061-T6	Driver	Cr-Mo 1-pcs, 9T
Axle	hard anodized alu 7075-T6	Pawls	6 pawls design with 6 individual, double springs
Bolts	hollow Cr-Mo 3/8"x24T, heat-treated	Engag. points	30
Cones	alu 7075-T6, push-in (both sides)	Holes	36H, 32H
Bearings	5 precision sealed bearings (x3 in driver, x2 in hub shell)	Weight	380g

Hub-shell	alu 6061-T6	Driver	Cr-Mo 1-pcs, 10T
Axle	hard anodized alu 7075-T6	Pawls	6 pawls design
Bolts	hollow Cr-Mo 3/8"x24T, heat-treated	Engag. points	48
Cones	alu 7075-T6, push-in (both sides)	Holes	36H, 32H
Bearings	5 precision sealed bearings	Weight	405g



BOLTS

3/8"x24T side bolts available in hollow and solid version. Compatible with Revolt Pro Singlespeed, Revolt Singlespeed, Revolt Pro Cassette, Revolt Cassette and Razor hubs. There are two cr-mo bolts and two alu 7075 washers in a set.

REVOLT DISC

REVOLT DISC PRO 20

Dartmoor continues to build a fully custom designed line of Revolt hubs. After Singlespeed and Cassette rear hubs we launched over the past two seasons we take the next big steps now with a complete family of the front hubs.

Revolt Pro Disc 20 is the hi-end 20mm through axle front hub with the peak of technology and design combined together. This silent wonder will run smooth through any virgin terrain. Asymmetrical design with a higher right flange with lightweight cuts and a smaller left flange together with perfectly clean lines put these hubs among the best ones in their league.

The hub is also one of the lightest ones dedicated for the gravity riding but don't be deceived by the low weight! It is tough enough for the hardest Downhill and Freeride jobs even in the wet conditions thanks to the double sealed bearings, and slim body lines that will not catch mud easily.

Size: 110x20mm. **Holes:** 36, 32. **Weight:** 165g.



REVOLT DISC PRO 15

Revolt Pro Disc 15 hub is using the same top notch technology as the Pro Disc 20 version just this one is coming with the 15mm through axle standard. Asymmetrical design with a higher right flange with lightweight cuts and a smaller left flange together with perfectly clean lines put these hubs among the best ones and definitely also the lightest ones in their category.

It is a perfect choice for all the All Mountain and Enduro riders. With the double sealed bearings and slim body lines this hub will not catch mud easily. High precision machining with tight tolerances make it a hub that will last for years.

We know that you need to trust every part in your bike when taking it to the next level and the Revolt Pro Disc line requires the same from you!

Size: 100x15mm. **Holes:** 36, 32. **Weight:** 160g.



REVOLT DISC 20

Revolt Disc 20 hubs will be a choice those who rather prefer affordable parts than the lightest ones. This 20mm through axle hub with the disc brake mount has a body made of 6061 aluminium and is equipped with 2 good quality sealed bearings to ensure a long time and smooth spinning of your front wheel.

Size: 110x20mm. **Holes:** 36, 32. **Weight:** 205g.



REVOLT NON DISC 20

Revolt Non Disc 20 is our new hub for those who know that the only brake they will use on the front wheel is their foot. The lack of disc rotor mounts makes it possible to give this hub some cool smooth lines. Both flanges are spaced wider now so the whole stiffness raised up and that is what we are looking for when developing new parts for dirt and street riders! The 20mm through axle fits well with the concept of the stiff, light perfectly working front hub.

There will be also a very special and limited edition of Revolt Non Disc 20 hub in the Petrol finish matching Cody frame in the same finish.

Size: 110x20mm. **Holes:** 36, 32. **Weight:** 168g.

VEE ONE

VEE ONE

Very light cassette rear disc hub with hub body made of 6061 aluminium and 10mm hollow alu 7075 axle with 6mm female bolts. Cassette body is made of 7075 aluminium. This hub is equipped with 4 high quality sealed bearings. Machined cut-outs in disc side flange and machined disc brake mount are applied for weight reduction. New delivery which will come with the new logo matching our refreshed graphics line.
Size: 135x10mm. **Holes:** 36, 32. **Pawls:** 3. **Engagement points:** 24. **Weight:** 323g.



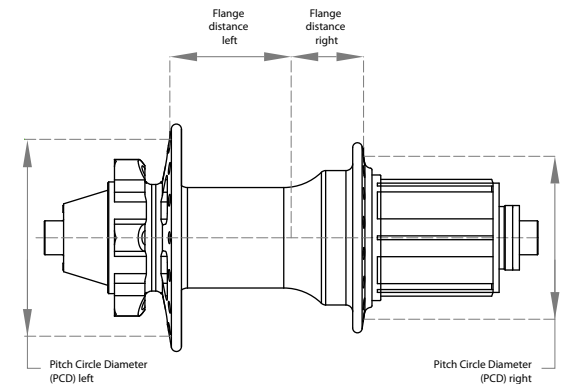
VEE TWO

Very light front disc hub with hub body made of 6061 aluminium and hollow alu 7075 axle with 6mm female bolts. This hub is equipped with 2 high quality sealed bearings. Machined cut-outs in disc side flange and machined disc brake mount are applied for weight reduction. New delivery which will come with the new logo matching our refreshed graphics line.
Size: 100x10mm. **Holes:** 36, 32. **Weight:** 199g.



	Wheel	Application	Hub size (mm)	PCD left (mm)	PCD right (mm)	Flange distance left (mm)	Flange distance right (mm)
PRO SERIES							
Revolt Pro Singlespeed	Rear	Dirt/Street/Slopestyle	135x10	58	58	34	38
Revolt Pro Cassette 150x12	Rear	Freeride/Downhill	150x12/ *157x12	58	58	42	26.5
Revolt Pro Cassette 135/142x12	Rear	Freeride/Enduro/ All Mountain	135x12/ 142x12	58	58	34	20
Revolt Pro Cassette 135x10	Rear	Freeride/Enduro/ All Mountain	135x10	58	58	34	20
Revolt Pro Disc 20	Front	Freeride/Downhill	110x20	58	45	22.5	34.5
Revolt Pro Disc 15	Front	Freeride/Enduro/ All Mountain	100x15	58	45	22	36.5
STANDARD SERIES							
Revolt Singlespeed	Rear	Dirt/Street/Slopestyle	135x10	58	58	34	36
Revolt Cassette 135x12	Rear	Freeride/Enduro/ All Mountain	135x12/ **142x12	58	58	34	20
Revolt Cassette 135x10	Rear	Freeride/Enduro/ All Mountain	135x10	58	58	34	20
Vee-One	Rear	Trail/XC	135x10	58	49	34.5	21
Revolt Non Disc 20	Front	Dirt/Street/Slopestyle	110x20	47	47	36.2	36.2
Revolt Disc 20	Front	Freeride/Downhill	110x20	58	58	21.5	34.5
Vee-Two	Front	Trail/XC	100x10	58	45	22	36.5

* 157x12mm size is available for this hub after purchasing separate set of cones for 157/142mm standard
** 142x12mm size is available for this hub after purchasing separate set of cones for 142mm standard



SPOKES

Strong, cold forged spokes made of highest quality Swedish Sandvik T302 stainless steel. Quality comparable to the other best spokes on the market. 36 spokes in a package. Available sizes for 29", 27.5", 26", 24" and 20" wheels.

Finish: oxidized (black); metallic (gold, violet, blue, green, red); painted (light blue, orange, yellow, white).

Lengths (mm): 298, 296, 294, 292, 290, 288, 276, 274, 272, 270, 268, 266, 264, 262, 260, 258, 256, 254, 252, 250, 238, 236, 234, 232, 230, 228, 226, 190, 188, 186, 184, 182, 180.

Weight: 244g (258mm / metallic finish).

NIPPLES

Aluminium nipples. 3 times lighter than standard brass nipples. Beautiful anodized colors. 38 nipples in a package.

Length: 12mm. **Weight:** 11g (set).

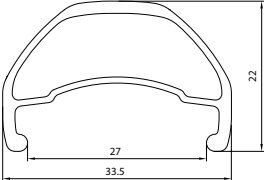
Warning: It is strictly recommended to use assembling tool dedicated for alu nipples and determine correct length of spokes when building up the wheel. Using standard tool (for brass nipples) or too short spokes may cause breaking of the alu nipples.



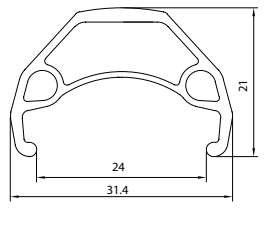
RIMS SPOKES SPECS

RIMS SPECIFICATION

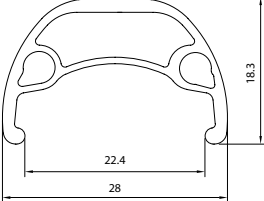
REVOLT

Miami vice	26" x 32H; 26" x 36H	
Black anodized	27.5" x 32H; 26" x 32H; 26" x 36H; 24" x 36H	
White coated	26" x 32H; 26" x 36H; 24" x 36H	
Red anodized	27.5" x 32H; 26" x 32H; 26" x 36H	
Turquoise anodized	27.5" x 32H; 26" x 32H; 26" x 36H	
Green anodized	26" x 32H; 26" x 36H	
Orange anodized	26" x 32H; 26" x 36H	

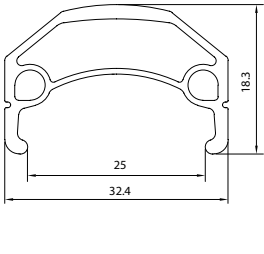
RAIDER

Black anodized	27.5" x 32H; 26" x 32H; 26" x 36H; 24" x 32H; 24" x 36H	
White coated	27.5" x 32H; 26" x 32H; 26" x 36H; 24" x 36H	
Red anodized	27.5" x 32H; 26" x 32H; 26" x 36H	
Turquoise anodized	27.5" x 32H; 26" x 32H; 26" x 36H	
Green anodized	26" x 32H; 26" x 36H; 24" x 36H	
Blue anodized	26" x 32H; 26" x 36H	
Violet anodized	26" x 32H; 26" x 36H	
Gold anodized	26" x 32H; 26" x 36H	
Graphite anodized	26" x 32H; 26" x 36H	

ROCKET

Black anodized	29" x 32H; 27.5" x 32H; 26" x 32H	
Red anodized	29" x 32H; 27.5" x 32H; 26" x 32H	
Blue anodized	29" x 32H; 27.5" x 32H; 26" x 32H	

FORTRESS

Black anodized	26" x 32H; 26" x 36H; 24" x 32H; 24" x 36H	
White coated	26" x 32H; 26" x 36H; 24" x 36H	
Red anodized	26" x 32H; 26" x 36H; 24" x 36H	
Turquoise anodized	26" x 32H; 26" x 36H	
Green anodized	26" x 32H; 26" x 36H; 24" x 36H	
Blue anodized	26" x 32H; 26" x 36H; 24" x 36H	
Violet anodized	26" x 32H; 26" x 36H	
Gold anodized	26" x 32H; 26" x 36H; 24" x 36H	
Graphite anodized	26" x 36H	
Yellow coated	26" x 36H; 24" x 36H	
Pink coated	26" x 36H	

RECOMMENDED SPOKES LENGTH

Hub model	Rim model	Holes	Inter-secs	Spokes length left side (mm)	Spokes length right side (mm)	Rim ERD (mm)	Rim OSB (mm)
-----------	-----------	-------	------------	------------------------------	-------------------------------	--------------	--------------

MTB REAR HUBS - SINGLESPEED							
Revolt Pro Singlespeed 135x10mm	Rocket 29"	32	3	294	294	605	0.75
	Revolt 27.5"	32	3	270	272	559	1.7
	Rocket 27.5"	32	3	274	276	567	0.75
	Raider 27.5"	32	3	272	272	562	1.5
	Revolt 26"	32	3	258	260	534	1.7
	Revolt 26"	36	3	254	256	534	1.7
	Rocket 26"	32	3	262	262	542	0.75
	Fortress/Raider 26"	32	3	260	260	537	1.5
	Fortress/Raider 26"	36	3	256	258	537	1.5
	Revolt 24"	36	3	230	230	482	1.7
	Fortress/Raider 24"	32	3	234	234	485	1.5
	Fortress/Raider 24"	36	3	230	232	485	1.5

Revolt Singlespeed 135x10mm	Rocket 29"	32	3	294	294	605	0.75
	Revolt 27.5"	32	3	270	272	559	1.7
	Rocket 27.5"	32	3	274	274	567	0.75
	Raider 27.5"	32	3	272	272	562	1.5
	Revolt 26"	32	3	258	258	534	1.7
	Revolt 26"	36	3	254	256	534	1.7
	Rocket 26"	32	3	262	262	542	0.75
	Fortress/Raider 26"	32	3	260	260	537	1.5
	Fortress/Raider 26"	36	3	256	256	537	1.5
	Revolt 24"	36	3	230	230	482	1.7
	Fortress/Raider 24"	32	3	234	234	485	1.5
	Fortress/Raider 24"	36	3	230	232	485	1.5

K-Drive 135x10mm	Rocket 29"	32	3	294	294	605	0.75
	Revolt 27.5"	32	3	270	270	559	1.7
	Rocket 27.5"	32	3	274	274	567	0.75
	Raider 27.5"	32	3	272	272	562	1.5
	Revolt 26"	32	3	258	258	534	1.7
	Revolt 26"	36	3	256	256	534	1.7
	Rocket 26"	32	3	262	262	542	0.75
	Fortress/Raider 26"	32	3	260	260	537	1.5
	Fortress/Raider 26"	36	3	256	256	537	1.5
	Revolt 24"	36	3	230	230	482	1.7
	Fortress/Raider 24"	32	3	234	234	485	1.5
	Fortress/Raider 24"	36	3	232	230	485	1.5

MTB REAR HUBS - CASSETTE							
Revolt Pro Cassette 150x12mm	Rocket 29"	32	3	294	292	605	0.75
	Revolt 27.5"	32	3	272	270	559	1.7
	Rocket 27.5"	32	3	276	274	567	0.75
	Raider 27.5"	32	3	274	272	562	1.5
	Revolt 26"	32	3	260	258	534	1.7
	Revolt 26"	36	3	256	254	534	1.7
	Rocket 26"	32	3	264	262	542	0.75
	Fortress/Raider 26"	32	3	260	258	537	1.5
	Fortress/Raider 26"	36	3	258	256	537	1.5
	Revolt 24"	36	3	230	228	482	1.7
	Fortress/Raider 24"	32	3	236	234	485	1.5
	Fortress/Raider 24"	36	3	232	230	485	1.5

Revolt Pro Cassette 135/142x12 and 135x10mm	Rocket 29"	32	3	294	292	605	0.75
	Revolt 27.5"	32	3	270	270	559	1.7
	Rocket 27.5"	32	3	274	274	567	0.75
	Raider 27.5"	32	3	272	270	562	1.5
	Revolt 26"	32	3	258	256	534	1.7
	Revolt 26"	36	3	254	254	534	1.7
	Rocket 26"	32	3	262	260	542	0.75
	Fortress/Raider 26"	32	3	260	258	537	1.5
	Fortress/Raider 26"	36	3	256	254	537	1.5
	Revolt 24"	36	3	230	228	482	1.7
	Fortress/Raider 24"	32	3	234	232	485	1.5
	Fortress/Raider 24"	36	3	230	230	485	1.5

Revolt Cassette 135x12mm and 135x10mm	Rocket 29"	32	3	294	292	605	0.75
	Revolt 27.5"	32	3	270	270	559	1.7
	Rocket 27.5"	32	3	274	274	567	0.75
	Raider 27.5"	32	3	272	270	562	1.5
	Revolt 26"	32	3	258	256	534	1.7
	Rocket 26"	32	3	262	260	542	0.75
	Fortress/Raider 26"	32	3	260	258	537	1.5
	Fortress/Raider 24"	32	3	234	232	485	1.5
	Fortress/Raider 24"	36	3	230	232	485	1.5

Hub model	Rim model	Holes	Inter-secs	Spokes length left side (mm)	Spokes length right side (mm)	Rim ERD (mm)	Rim OSB (mm)
Quantic 150x12mm	Rocket 29"	32	3	294	294	605	0.75
	Revolt 27.5"	32	3	272	272	559	1.7
	Rocket 27.5"	32	3	276	276	567	0.75
	Raider 27.5"	32	3	274	272	562	1.5
	Revolt 26"	32	3	260	260	534	1.7
	Revolt 26"	36	3	256	256	534	1.7
	Rocket 26"	32	3	264	262	542	0.75
	Fortress/Raider 26"	32	3	266	260	537	1.5
	Fortress/Raider 26"	36	3	258	258	537	1.5
	Revolt 24"	36	3	230	230	482	1.7
	Fortress/Raider 24"	32	3	236	234	485	1.5
	Fortress/Raider 24"	36	3	232	232	485	1.5

Vee-One Vee-Oh 135x10mm	Rocket 29"	32	3	294	294	605	0.75
	Revolt 27.5"	32	3	270	270	559	1.7
	Rocket 27.5"	32	3	274	274	567	0.75
	Raider 27.5"	32	3	272	272	562	1.5
	Revolt 26"	32	3	258	258	534	1.7
	Revolt 26"	36	3	254	256	534	1.7
	Rocket 26"	32	3	262	262	542	0.75
	Fortress/Raider 26"	32	3	260	260	537	1.5
	Fortress/Raider 26"	36	3	256	256	537	1.5
	Revolt 24"	36	3	230	230	482	1.7
	Fortress/Raider 24"	32	3	234	234	485	1.5
	Fortress/Raider 24"	36	3	230	230	485	1.5

MTB FRONT HUBS - 20mm AXLE							
Revolt Pro Disc 20 110x20mm	Rocket 29"	32	3	292	296	605	0.75
	Revolt 27.5"	32	3	270	272	559	1.7
	Rocket 27.5"	32	3	274	276	567	0.75
	Raider 27.5"	32	3	272	274	562	1.5
	Revolt 26"	32	3	258	260	534	1.7
	Revolt 26"	36	3	254	258	534	1.7
	Rocket 26"	32	3	262	264	542	0.75
	Fortress/Raider 26"	32	3	258	262	537	1.5
	Fortress/Raider 26"	36	3	256	260	537	1.5
	Revolt 24"	36	3	228	232	482	1.7
	Fortress/Raider 24"	32	3	234	236	485	1.5
	Fortress/Raider 24"	36	3	230	234	485	1.5

Revolt Disc 20 110x20mm	Rocket 29"	32	3	292	294	605	0.75
	Revolt 27.5"	32	3	270	270	559	1.7
	Rocket 27.5"	32	3	274	274	567	0.75
	Raider 27.5"	32	3	270	272	562	1.5
	Revolt 26"	32	3	256	258	534	1.7
	Revolt 26"	36	3	254	254	534	1.7
	Rocket 26"	32	3	260	262	542	0.75
	Fortress/Raider 26"	32	3	258	260	537	1.5
	Fortress/Raider 26"	36	3	254	256	537	1.5
	Revolt 24"	36	3	228	230	482	1.7
	Fortress/Raider 24"	32	3	232	234	485	1.5
	Fortress/Raider 24"	36	3	230	230	485	1.5

Revolt Non Disc 20 110x20mm	Rocket 29"	32	3	296	296	605	0.75
	Revolt 27.5"	32	3	272	272	559	1.7
	Rocket 27.5"	32	3	276	276	567	0.75
	Raider 27.5"	32	3	274	274	562	1.5
	Revolt 26"	32	3	260	260	534	1.7
	Revolt 26"	36	3	258	258	534	1.7
	Rocket 26"	32	3	264	264	542	0.75
	Fortress/Raider 26"	32	3	262	262	537	1.5
	Fortress/Raider 26"	36	3	258	258	537	1.5
	Revolt 24"	36	3	232	232	482	1.7
Fortress/Raider 24"	32	3	236	236	485	1.5	
Fortress/Raider 24"	36	3	234	234	485	1.5	

There is a saying, „If you love what you are doing, even when times are hard, if you see it through, it will make life worth living. Life is full of ups and downs and the path is often rocky but you will meet many people as passionate as you along the way. Helping each other along the way can turn strangers into true friends who will be there to cover you back”. After many years the same people gather together and become a team of specialists, we are become **Dartmoor Bikes.**

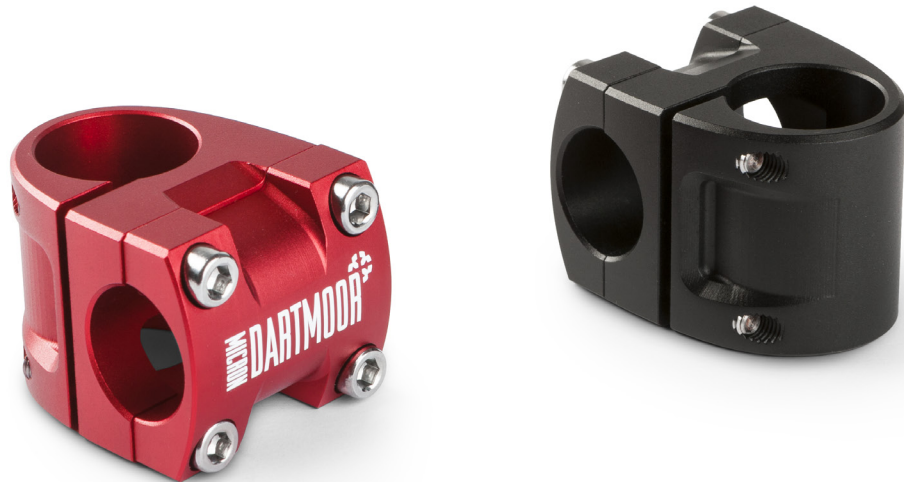
From our first steps as a brand we have kept one thing in mind, that is that the riding is the most important thing in cycling. Bikes bring the best memories from our lives including first bunny hops, backflips, winning the contests or just mellow times with the friends on those Sunday’s ride. Bikes bring up personalities in people and mold them to become stronger after overcoming fears and weaknesses. They are the perfect tools to have fun in life. They should be durable, tough and have this little something called character but they should not be more important than riding itself. They are objects that could be replaced or lost. Unlike like the memories from using and having fun on them! Thanks to our passion, we can share this road with everybody who finds themselves comfortable in the saddle when the trail heads uphill. After so many years we are still **Riding Our Way!**



#RIDEYOURWAY



MICRON



MICRON

Micron is a minimalistic dirt jump and street stem for those who don't like to keep their knees intake. Ultra light and short design accompanied with the proven stiffness and durability put Micron in the high end stem area. The use of 4 bolts instead of 6 allowed us to lower the weight of the whole construction down to 137 grams.

The Micron is made of 6066-T6 aluminium, with an extension of 30mm and made for 25.4mm bars only. If you like the smooth lines and trustworthy parts, the Micron is made for you!

There will be also a very special and limited edition of Micron stem in the Petrol finish matching Cody frame in the same finish.

Bar bore: 25.4mm. **Extension:** 30mm. **Bolts:** M6x22mm (x2); M6x42mm (x2). **Weight:** 145g.



FURY V.2

A brand new version of our trusted stem, redesigned to become much more stylish than before. For 2014 all the rough lines of its shape got dialed and are now silky smooth. It is not only the outside that has been changed - with some careful machining we have managed to keep the 31.8mm version the same weight as before while increasing the extension from 40mm to 45mm and the 25.4mm extension version got even lighter.

Used for all kinds of riding - from Dirt Jumping to heavy Freeride - Fury V.2 is one of the best "do it all" stems in our product range! Investing in cold forged technology made it to be not only stronger but also a lot more affordable than before!

Bar bore: 25.4mm, 31.8mm. **Extension:** 35mm (25.4mm), 45mm (31.8mm). **Weight:** 154g (25.4mm), 187g (31.8mm).



FURY V.2

RAGE V.2



RAGE V.2

Upgraded version of our hi-end downhill stem with adjustable extension and re-designed body. Direct Mount standard for Boxxer, Fox or Dorado forks. Made of cold forged and CNC machined 7075 aluminium. We added to this stem a special washers securing the stem against changing its position when hitting the ground strongly.

Bar bore: 31.8mm. **Extension:** 45-50mm. **Weight:** 142g (with front plate bolts).



FUNKY

Our hi-end and unique stem made of cold forged and CNC machined 6061 aluminium. One of the lightest gravity stems on the market. Custom body shape with 2-pcs front plate design. All bolts are M6 size. Available in the full range of anodized colors: black, turquoise, green, red, blue, violet, gold and graphite plus silver polished and white coated.

Bar bore: 25.4mm, 31.8mm. **Extension:** 35mm (25.4mm), 40mm (31.8mm). **Weight:** 148g (25.4mm), 170g (31.8mm).

TRAIL



TRAIL

With our experience in designing some of the most reliable stems for the hardcore users, we thought of making something that will suit those who are still in the gravity family but prefer endurance type of riding. That is how Trail stem came to life.

Our aim is to offer a light but stiff stem so we went for an octagonal shape both on the inside and outside curves, what makes it stiffer than a regular stem, while looking like no other. It is designed for the 31.8mm bars and coming in two extension sizes: 50mm and 65mm. The Trail will perfectly suit your next Enduro or All Mountain bike !

Bar bore: 31.8mm. **Extension:** 50mm, 65mm. **Weight:** 127g (50mm), 139g (55mm).



NITRO DH FR

NITRO DH

Lightweight and super strong downhill handlebar made of butted 7075 aluminium. Super wide and comfortable with perfect shape for those who search for the out of bounds experience. Designed for the 31.8mm stems only Nitro bars should fit needs of all hard hitters. They are strictly tested to meet our high custom requirements with increased load, so go for them if you want to define gravity one more time !

Diameter: 31.8mm. **Width:** 780mm. **Rise:** 0.5". **Upsweep:** 5°. **Backsweep:** 9°. **Weight:** 320g.



NITRO FR

Second version of our hi-end 31.8mm Nitro bars with increased rise to meet requirements of many freeride and downhill riders. Made of butted 7075 aluminium. Still very light and super strong.

Diameter: 31.8mm. **Width:** 780mm. **Rise:** 1.5". **Upsweep:** 4°. **Backsweep:** 9°. **Weight:** 345g.



ROOTS



ROOTS

The new Roots grips are our answer to the needs of the gravity riders. Michał Sliwa (the forerunner of the Polish Downhill scene and the multi medalist of this discipline) got us hooked on this idea of developing the grips that will be thicker and softer than other grips on the market. The hard part of this project was to design a product that will not catch mud easily and still be sticky in the extreme conditions. After lots of testing and feedback the Roots grips were born. They come into their own in wet Downhill and Freeride tracks but our testers found them good enough even for Enduro or Dirt Jumping.

The surface design can be described as the mountains slowly turning into the tree roots. Those soft elements not only looks good but are ergonomically linked with the structure of the hand. The center of the hand got a solid grab on the mountains looking pattern while fingers slip between the roots pattern to catch even firmer grip! These lock-on beauties comes with a special aluminium bar end design where the side cap is replaceable. You will get them with the aluminium side cap assembled but don't worry weight weenies, we will include a set of spare plastic caps for you too!

Length: 130mm. **Diameter:** 32mm. **Weight:** 123g (w/aluminium side caps), 117g (w/plastic side caps).



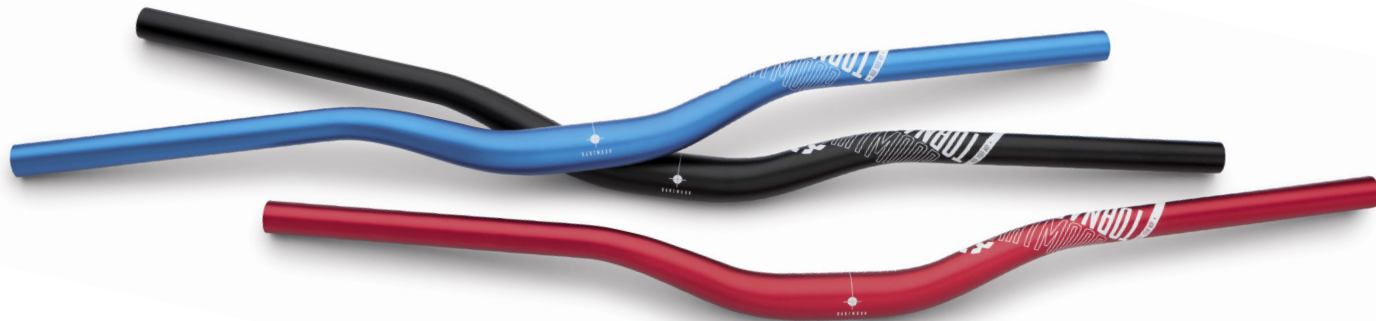
BOOGIE



BOOGIE

Lightweight handlebar with oversized center section made of butted 7075 aluminium. Very wide and perfectly shaped with smooth bends. Strictly tested to meet our high custom requirements with increased load.

Diameter: 31.8mm. **Width:** 750mm. **Rise:** 2". **Upsweep:** 6°. **Backsweep:** 7°. **Weight:** 352g.



TORNADO

If you look for the affordable and reliable bars and you are not a weight weenie then Tornado is for you. It is made of the 6061 aluminium with simpler butting to keep the weight in line with the price. This bar was designed with input from our riding experience, so it keeps the best shape and angles to provide you a safe ride. From the streets of big cities to the deep woods and mountain ranges, Tornado will take you anywhere.

Diameter: 31.8mm. **Width:** 750mm. **Rise:** 1.5". **Upsweep:** 4°. **Backsweep:** 9°. **Weight:** 415g.

TORNADO

ICON



ICON

Lightweight and comfortable MTB grips with lock-on alu clamps and Ride Your Way alu bar ends. 145mm length gives you plenty of room for barspins and other tricks. Custom design with Dartmoor logo in the grip pattern. Special compound material – comfortable and with increased durability. Alu bar ends for better handlebar protection.

Length: 145mm. **Diameter:** 32mm. **Weight:** 138g (clamps/bar ends included).

RACE

Classic MTB grips with lock-on alu clamps and mushroom pattern. Made of kraton.

Length: 135mm, 145mm. **Weight:** 122g (145mm with clamps/plugs included).



RACE

SWING LOW



SWING LOW

Swings are our very popular lightweight bars made of butted 7075 aluminium. 750mm wide with a 2" rise makes them a perfect choice for any type of gravity riders who prefer 25.4mm standard. The wide angle bendings ensures the proper freestyle look.

Diameter: 25.4mm. **Width:** 750mm. **Rise:** 2". **Upsweep:** 6°. **Backsweep:** 7°. **Weight:** 365g.



SWING HI

High rise version of our lightweight Swing bars made of butted 7075 aluminium. They are 710mm wide with a 3.5" rise and truly smooth bendings. Go for them if you need high rise bars and aluminium is your preferable material choice. Both Swing Hi and Swing Low are strictly tested to meet our high custom requirements with increased load.

Diameter: 25.4mm. **Width:** 710mm. **Rise:** 3.5". **Upsweep:** 6°. **Backsweep:** 7°. **Weight:** 365g.

SWING

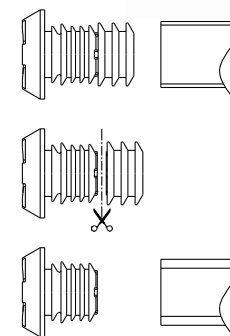
BLOCK

BLOCK

Soft flangeless grips made of durable compound comfortable for both, gloves users and people who prefer to ride with bare hands. Low profile, multiple direction Tetris blocks style pattern offers a perfect grip for better control and corresponds to the 'Every block is different but game is the same' slogan molded on the grip ends.

As you know every player needs a proper joystick to enjoy the game, so we included a very special nylon bar ends. They are made of two sections to fit both - cr-mo and alu bars and their pad controller looking design tease you to start the game now !

Length: 155mm. **Diameter:** 29mm. **Weight:** 96g (bar ends included).



BAR END

Push style bar ends with a unique design fitting all the inner diameter sizes of the different handlebars. Made of two sections, with different diameter size, and a cutting line between them. If uncut these bar ends fit perfectly cr-mo MTB and BMX bars. After cutting they can be used for aluminium bars with thicker walls.

Weight: 16g.



BAR END

TOXIC



TOXIC

Strong bars made of butted and fully heat treated Cr-Mo 4130 steel to survive any street riding abuse you will put on them. High rise and proper geometry will make riding at your favourite street spots much more comfortable now. Toxics are strictly tested to meet our high custom requirements with increased load.

Diameter: 22.2mm. **Width:** 720mm. **Rise:** 3.5". **Upsweep:** 5°. **Backsweep:** 8°. **Weight:** 455g.



NITRO

Nitro bars in 2012 edition with classic Dartmoor logo and full range of colors.

Diameter: 31.8mm. **Width:** 780mm.
Rise: 0.5". **Upsweep:** 5°. **Backsweep:** 9°. **Weight:** 320g.

SWING LOW

Swing Low bars in 2012 edition with classic Dartmoor logo and full range of colors.

Diameter: 25.4mm. **Width:** 750mm.
Rise: 2". **Upsweep:** 6°. **Backsweep:** 7°. **Weight:** 365g.

SWING HI

Swing Hi bars in 2012 edition with classic Dartmoor logo and full range of colors.

Diameter: 25.4mm. **Width:** 710mm.
Rise: 3.5". **Upsweep:** 6°. **Backsweep:** 7°. **Weight:** 365g.

SHAMANN



SHAMANN

High flanges grips made of special rubber compound with increased durability and extra softness for very comfortable using. Plastic bar ends included. UV sensitive color option available (it changes color rapidly outdoor).

Length: 150mm. **Diameter:** 30mm. **Weight:** 154g (bar ends included).



EVOLUTION

Classic BMX grips with high flange and mushroom pattern. Made of kraton.

Length: 147mm. **Weight:** 151g (bar ends included).

BLINK



BLINK

Top quality headset with integrated top and bottom parts. IS42/IS52 type for tapered head tube and both types of forks, with 1-1/8" and tapered steerers. Ultra low profile top cover made of 2014 aluminium. High quality precision sealed 45/45 bearings with anti-rust titanium coating. Custom Ride Your Way compression cap included. They come with two steel crown races, one for tapered and second for 1-1/8" forks.

Fitting Roots, Wish 2014, Hornet 2014, Hornet 4X, Primal, Primal 29 and Gamer Dartmoor frames.

PRIME

Top quality headset with integrated top and bottom parts. IS42/IS42 type for 1-1/8" head tube and forks with 1-1/8" steerer. Top cover made of 2014 aluminium. High quality precision sealed 45/45 bearings with anti-rust titanium coating. Custom Ride Your Way compression cap included.

Fitting Cody, Ghetto, Quinnie and Freaky Dartmoor frames as well as Thug, Nami and Yuki DartBMX frames.



	Top part type (S.H.I.S)	Bottom part type (S.H.I.S)	Fork steerer type	Upper bearing size (mm)	Bottom bearing size (mm)	Upper HT inside diam. (mm)	Bottom HT inside diam. (mm)	Stem damp diam. (mm)	Crown race seat diam. (mm)	Top stack height (mm)	Bottom stack height (mm)	Weight (g)
Blink	IS42	IS52	tapered/standard 1-1/8"	41.8x30.5x8	52x40x8	42	52.1	28.6	39.79/30.015	5.4	0	72
Prime	IS42	IS42	standard 1-1/8"	41.8x30.5x8	41.8x30.5x8	42	42	28.6	30.015	5.4	0	61

BLAZE



BLAZE

Top quality headset with external top and bottom parts. Cups and top cover made of 2014 aluminium. Both cups drilled for weight reduction. High quality precision sealed 45/45 bearings with anti-rust titanium coating. Custom Ride Your Way compression cap included. They come with two steel crown races, one for tapered and second for 1-1/8" forks.

Fitting Wish '12/'13, Shine, Two6Player, Hornet '12/'13 and Phantom '12/'13 Dartmoor frames.



FLASH

Top quality headset with external top part and zero stack (semi-integrated) bottom part. EC34/ZS49 type for tapered head tube and 1-1/8" fork steerer. Cups and top cover made of 2014 aluminium. Upper cup drilled for weight reduction with ultra low profile top cover. Bottom cup with integrated 1-1/8" reduction. High quality precision sealed 45/45 bearings with anti-rust titanium coating. Custom Ride Your Way compression cap included.

Fitting Wish '12/'13, Shine, Two6Player, Hornet '12/'13 and Phantom '12/'13 Dartmoor frames.

	Top part type (S.H.I.S)	Bottom part type (S.H.I.S)	Fork steerer type	Upper bearing size (mm)	Bottom bearing size (mm)	Upper HT inside diam. (mm)	Bottom HT inside diam. (mm)	Stem damp diam. (mm)	Crown race seat diam. (mm)	Top stack height (mm)	Bottom stack height (mm)	Weight (g)
Flash	EC34	ZS49	standard 1-1/8"	41x30.15x7	41.8x30.5x8	33.95	49.61	28.6	30.015	12.7	2.8	109
Blaze	EC34	EC49	tapered/standard 1-1/8"	41x30.15x7	52x40x8	33.95	49.61	28.6	39.79/30.015	12.7	13.2	126

SPECS

	Top part type (S.H.I.S)	Bottom part type (S.H.I.S)	Fork steerer type	Upper bearing size (mm)	Bottom bearing size (mm)	Upper HT inside diam. (mm)	Bottom HT inside diam. (mm)	Stem damp diam. (mm)	Crown race seat diam. (mm)	Top stack height (mm)	Bottom stack height (mm)	Weight (g)
Blink	IS42	IS52	tapered/standard 1-1/8"	41.8x30.5x8	52x40x8	42	52.1	28.6	39.79/30.015	5.4	0	72
Prime	IS42	IS42	standard 1-1/8"	41.8x30.5x8	41.8x30.5x8	42	42	28.6	30.015	5.4	0	61
Flash	EC34	ZS49	standard 1-1/8"	41x30.15x7	41.8x30.5x8	33.95	49.61	28.6	30.015	12.7	2.8	109
Blaze	EC34	EC49	tapered/standard 1-1/8"	41x30.15x7	52x40x8	33.95	49.61	28.6	39.79/30.015	12.7	13.2	126
Dive	ZS44	ZS49	standard 1-1/8"	41x30.15x7	41.8x30.5x8	44	49.61	28.6	30.015	9	2.8	142
Spin	ZS44	EC49	tapered	41x30.15x7	52x40x8	44	49.61	28.6	39.79	9	13.2	122
Astro	ZS44	ZS56	tapered/standard 1-1/8"	41x30.15x7	52x40x8	44	55.95	28.6	39.79/30.015	9	2.8	120
Exile	ZS49	ZS49	standard 1-1/8"	41.8x30.5x8	41.8x30.5x8	49.61	49.61	28.6	30.015	9	2.8	106
Charge	EC34	EC34	standard 1-1/8"	41x30.15x7	41.8x30.5x8	33.95	33.95	28.6	30.015	12.7	13.1	99



DIVE

Top quality headset with zero stack (semi-integrated) top and bottom parts. ZS44/ZS49 type for tapered head tube and forks with standard 1-1/8" steerer tube. Cups and top cover made of 2014 aluminium. Bottom cup with integrated 1-1/8" reduction. High quality precision sealed 45/45 bearings with anti-rust titanium coating. Custom Ride Your Way compression cap included.

SPIN

Top quality headset with zero stack (semi-integrated) top part and external bottom part. ZS44/EC49 type for tapered head tube and forks with tapered steerer tube. Cups and top cover made of 2014 aluminium. Bottom cup drilled for weight reduction. High quality precision sealed 45/45 bearings with anti-rust titanium coating. Custom Ride Your Way compression cap included.



	Top part type (S.H.I.S)	Bottom part type (S.H.I.S)	Fork steerer type	Upper bearing size (mm)	Bottom bearing size (mm)	Upper HT inside diam. (mm)	Bottom HT inside diam. (mm)	Stem damp diam. (mm)	Crown race seat diam. (mm)	Top stack height (mm)	Bottom stack height (mm)	Weight (g)
Dive	ZS44	ZS49	standard 1-1/8"	41x30.15x7	41.8x30.5x8	44	49.61	28.6	30.015	9	2.8	142
Spin	ZS44	EC49	tapered	41x30.15x7	52x40x8	44	49.61	28.6	39.79	9	13.2	122

ASTRO



ASTRO

Top quality headset with zero stack (semi-integrated) top and bottom parts. ZS44/ZS56 type for tapered head tube and both types of forks, with 1-1/8" and tapered steerers. Cups and ultra low profile top cover made of 2014 aluminium. High quality precision sealed 45/45 bearings with anti-rust titanium coating. Custom Ride Your Way compression cap included. They come with two steel crown races, one for tapered and second for 1-1/8" forks.



CHARGE

Top quality headset with external top and bottom parts. EC34/EC34 type for 1-1/8" head tube and forks with standard 1-1/8" steerer. Both aluminium cups drilled for weight reduction. High quality precision sealed 45/45 bearings with anti-rust titanium coating. Custom Ride Your Way compression cap included.



	Top part type (S.H.I.S)	Bottom part type (S.H.I.S)	Fork steerer type	Upper bearing size (mm)	Bottom bearing size (mm)	Upper HT inside diam. (mm)	Bottom HT inside diam. (mm)	Stem damp diam. (mm)	Crown race seat diam. (mm)	Top stack height (mm)	Bottom stack height (mm)	Weight (g)
Astro	ZS44	ZS56	tapered/standard 1-1/8"	41x30.15x7	52x40x8	44	55.95	28.6	39.79/30.015	9	2.8	120
Exile	ZS49	ZS49	standard 1-1/8"	41.8x30.5x8	41.8x30.5x8	49.61	49.61	28.6	30.015	9	2.8	106
Charge	EC34	EC34	standard 1-1/8"	41x30.15x7	41.8x30.5x8	33.95	33.95	28.6	30.015	12.7	13.1	99

SPIN DIVE

CHARGE

COMBO



FATTY COMBO

Extra thick foam padded seat with one piece covering, nylon base and 6061 aluminium post. This combo comes in 4 different color options and with embossed Dartmoor logo.

Seat size: 230x143mm. **Seat post size:** 25.4x160mm, 27.2x200mm. **Weight:** 356g.



LITE COMBO

Slim padded seat with one piece covering, nylon base and 6061 aluminium post. It comes in 4 different color options and with embossed Dartmoor logo.

Seat size: 222x125mm. **Seat post size:** 27.2x200mm. **Weight:** 265g.

STICKY COMBO

Extra slim padded seat with one piece covering, nylon base and 6061 aluminium post. It comes with embossed Dartmoor logo.

Seat size: 222x120mm. **Seat post size:** 25.4x160mm. **Weight:** 249g.

PIVOTAL



FATTY

Extra thick foam padded Pivotal seat with one piece covering and nylon base. Hollow Pivotal bolt for decreased weight. This seat comes in 4 different color options and with embossed Dartmoor logo.

Seat size: 234x142mm. **Weight:** 329g.



BAMBOO

Ultra light plastic seat with nylon base and 6061 aluminium post.

Seat size: 217x113mm.

Seat post size: 25.4x160mm. **Weight:** 189g.



LITE

Slim padded Pivotal seat with one piece covering, nylon base and hollow Pivotal bolt. Embossed Dartmoor logo.

Seat size: 230x129mm. **Weight:** 264g.



IVY

Thick foam padded Pivotal seat with one piece covering, nylon base and hollow Pivotal bolt for decreased weight. Embossed Dartmoor logo. It comes in 4 different color options and with embossed Dartmoor logo.

Seat size: 232x134mm. **Weight:** 292g.

TRAIL

We are back with the railed seats for 2014 with the introduction of the new line of saddles for those that actually want to sit on them for mile after mile. The Trail is our affordable seat with some high end features like a strong base construction, hollow Cr-Mo rails and the abrasion proof Cordura cover.

This saddle will save your ass from the bumpy trails and hard hits plus last longer even in the bad weather conditions, which are so common for enduro and all mountain riding. Wide extra padded nose helps when climbing, especially when you shift yourself forward over the bars.

Seat size: 260x129mm. **Weight:** 249g.



FUSION

Pivotal seat post. Made of 6061 aluminium. Available in short and long version and several length and diameter options.

Diameter: 25.4mm, 27.2mm, 30.9mm, 31.6mm.

Length: 130mm (25.4mm), 200mm (27.2mm), 400mm (27.2mm, 30.9mm, 31.6mm).

Weight: 116g (25.4mm), 140g (27.2/200mm), 240g (27.2/400mm), 300g (30.9mm), 310g (31.6mm).

ROOTS

Our second newcomer in the railed seats category is the Roots model. This one is designed for the freeride and downhill riders so it must be tough enough to take some overdoses of fun. Easy to catch with your knees or hands – getting stylish on the loose track is now an obligatory!

Rails are made of the hollow Cr-Mo steel while the cover made out of the Cordura material in black-black, black-red or black-blue colors pattern will suit well your next fun machine and its eye-catching stitching design will make your bike far more unique.

Seat size: 281x131mm. **Weight:** 324g



RING

Lightweight seat clamp made of CNC machined aluminium. Bolt with 4mm Allen key socket.

Diameter: 31.8mm, 34.9mm.

Weight: 18g (31.8mm), 20g (34.9mm).



STRONG



RIDE YOUR WAY

Cotton t-shirts with Ride Your Way logo. Available in short sleeve version and two color option.

Sizes: S-XL.



PRESSURE

Slim knee protectors with anatomically fitted design. Possible to use under pants. Hard shell covered with Kevlar material. Breathable mesh material with comfortable Eva foam pads on both sides. With Velcro straps on the top and on the bottom to keep the protector safely on the knee.

Sizes: S, M, L.

ESSENCE

Shin protectors with anatomically fitted design. Made of a strong neoprene with hard but flexible inserts for better protection. Good ventilation and sweat absorption.

Sizes: M, L.



STRONG ROOTS

Cotton t-shirts with Strong Roots logo. Available in short sleeve or tank top version.

Sizes: S-XL.



SNAKE

Long finger gloves. Made of rip-proof fabrics. Well ventilated. Anti-slip silicone dot pattern on the inside of the palm.

Sizes: S-XXL.

SPARE

MODEL	SPARE PARTS
FRAMES	
ROOTS	Derailleur hanger
	Frame axle for 150x12mm hub spacing
	Bearings, full set
	Shock assembling bolt 8x34mm, set with inner bolt
	Shock assembling bolt 8x41mm, set with inner bolt
	Suspension system bolts (link-shock), set with washers
	Suspension system bolts (SS-dropout), set with inner bolts and washers
	Suspension system main bolt (TT), set with washers
	Suspension system main bolt (BB), set with inner bolt, bearing cap and washers
	Derailleur hanger
WISH	Frame axle for 135x12mm hub spacing
	Bearings, full set
	Shock assembling bolt 8x34mm, set with inner bolt
	Shock assembling bolt M8x62mm
	Suspension system bolts (link-shock), set with washers
	Suspension system bolts (SS-dropout), set with inner bolts and washers
	Suspension system main bolt (TT), set with washers
	Suspension system main bolt (BB), set with inner bolt, bearing cap and washers
	Derailleur hanger
	Bearings, full set
WISH 2013	Shock assembling bolt 8x34mm, set with inner bolt
	Shock assembling bolt 8x70mm, set with inner bolt, bearing caps and washers
	Suspension system bolts (SS-dropout) 8x20mm, set with bearing caps and washers
	Suspension system main bolt (TT), set with inner bolt, bearing cap and washers
	Suspension system main bolt (BB), set with inner bolt, bearing cap and washers
	Rear triangle
	Derailleur hanger for horizontal dropouts
	Shock assembling bolt 8x34mm, set with inner bolt
	Shock assembling bolt 8x60mm, set with inner bolt
	BB bearing
SHINE	BB washer
	BB tightening bolt with nut
	Seat clamp bolt/nut
	Gyro tabs
	Stick-on cable guide
	Derailleur hanger for horizontal dropouts
	Derailleur hanger
	Frame axle for 135x12mm hub spacing
	Derailleur hanger
	Derailleur hanger
CODY/QUINNIE	Derailleur hanger
	Frame axle for 135x12mm hub spacing
	Derailleur hanger
	Derailleur hanger
	Derailleur hanger
	Derailleur hanger
	Derailleur hanger
	Derailleur hanger
	Derailleur hanger
	Derailleur hanger
TWO6PLAYER	Derailleur hanger
	Frame axle for 135x12mm hub spacing
	Derailleur hanger
	Derailleur hanger
	Derailleur hanger
	Derailleur hanger
	Derailleur hanger
	Derailleur hanger
	Derailleur hanger
	Derailleur hanger
HORNET/HORNET4X	Derailleur hanger
	Frame axle for 135x12mm hub spacing
	Derailleur hanger
	Derailleur hanger
	Derailleur hanger
	Derailleur hanger
	Derailleur hanger
	Derailleur hanger
	Derailleur hanger
	Derailleur hanger
PRIMAL/PRIMAL 29	Derailleur hanger
	Frame axle for 135x12mm hub spacing
	Derailleur hanger
	Derailleur hanger
	Derailleur hanger
	Derailleur hanger
	Derailleur hanger
	Derailleur hanger
	Derailleur hanger
	Derailleur hanger
GHETTO/FREAKY	Derailleur hanger
	Frame axle for 135x12mm hub spacing
	Derailleur hanger
	Derailleur hanger
	Derailleur hanger
	Derailleur hanger
	Derailleur hanger
	Derailleur hanger
	Derailleur hanger
	Derailleur hanger
BRONX/PUNCHER	Derailleur hanger
	Frame axle for 135x12mm hub spacing
	Derailleur hanger
	Derailleur hanger
	Derailleur hanger
	Derailleur hanger
	Derailleur hanger
	Derailleur hanger
	Derailleur hanger
	Derailleur hanger
THORN MTB/BMX	Derailleur hanger
	Frame axle for 135x12mm hub spacing
	Derailleur hanger
	Derailleur hanger
	Derailleur hanger
	Derailleur hanger
	Derailleur hanger
	Derailleur hanger
	Derailleur hanger
	Derailleur hanger
FLARE	Derailleur hanger
	Frame axle for 135x12mm hub spacing
	Derailleur hanger
	Derailleur hanger
	Derailleur hanger
	Derailleur hanger
	Derailleur hanger
	Derailleur hanger
	Derailleur hanger
	Derailleur hanger
KEIPO EX/KEIPO	Derailleur hanger
	Frame axle for 135x12mm hub spacing
	Derailleur hanger
	Derailleur hanger
	Derailleur hanger
	Derailleur hanger
	Derailleur hanger
	Derailleur hanger
	Derailleur hanger
	Derailleur hanger

MODEL	SPARE PARTS
CHUKKA TWO	Axle
ROCK	Steel crank bolts
	Pinch bolt M8x1.25
	External BB set
	Crank bolt M18xP1.0
SPROCKETS	
BMX SPROCKETS	Adapter for 19mm axle, steel
	Adapter for 22mm axle, steel
HUBS	
REVOLT PRO SINGLESPEED	Axle
	Driver 9T
	Driver 10T
	Bearing 15268-2RS for Q-Lite driver
	Set of 6 pawls with springs
	Cone left
	Cone right
	Bolts hollow 3/8"x24T
	Bolts solid 3/8"x24T
REVOLT SINGLESPEED	Axle
	Driver 9T
	Driver 10T
	Cones (left+right)
	Set of 6 pawls with springs
	Bolts hollow 3/8"x24T
	Bolts solid 3/8"x24T
REVOLT PRO CASSETTE	Axle for 150x12mm hub
	Axle for 135/142x12mm hub
	Axle for 135x10mm hub
	Cassette
	Cones (left+right) for 150x12, 135x12, 135x10 hubs, with o-rings
	Cones (left+right) for 142x12 hub, with o-rings
	Cassette for SRAM XX1, set with special cones for all hub sizes
	Bearing 15268-2RS for Q-Lite cassette
	Set of 6 pawls with springs
	Lip seals, set for left cone and cassette
	Bolts hollow 3/8"x24T (for 135x10mm hub)
	Bolts solid 3/8"x24T (for 135x10mm hub)
REVOLT CASSETTE	Axle for 135x12mm hub
	Axle for 135x10mm hub
	Cassette, alu material
	Cassette, steel material
	Cones (left+right) for 135x12mm hub
	Cones (left+right) for 142x12mm hub
	Cones (left+right) for 135x10mm hub
	Set of 6 pawls with single spring
	Bolts hollow 3/8"x24T (for 135x10mm hub)
	Bolts solid 3/8"x24T (for 135x10mm hub)
QUANTIC	Axle
	Cassette
	Cones (left+right)
VEE-OH	Axle male, alu material
	Cassette
VEE-ONE	Axle, alu material
	Axle, steel material
	Cassette
	Cones (left+right)
	Alu caps
VEE-TWO	Axle
	Alu caps

MODEL	SPARE PARTS
CHAIN GUIDES	
TRAIL	Backplate ISCG-05
	Backplate ISCG-OLD
	Bashguard taco type
	Upper cage (10-speed compatible)
	Bottom cage (10-speed compatible)
	BB adapter ISCG-05
	BB adapter ISCG-OLD
	Set of adjusting washers
BLADE	Upper cage (9-speed compatible)
	Bottom cage (9-speed compatible)
	BB adapter ISCG-05
	BB adapter ISCG-OLD
	Set of adjusting washers
SIMPLE	Roller
	BB adapter ISCG-05
	BB adapter ISCG-OLD
	Set of adjusting washers
STEMS	
RAGE v.2/v.1	Bolts M6, set of 8 pieces (frontplate+crown)
TRAIL	Bolts, set of 6 pieces (M5 frontplate x4 + M6 steerer x2)
MICRON	Bolts M6, set of 4 pieces (frontplate+steerer combo)
FUNKY	Bolts M6 for 25.4mm stem, set of 6 pieces (frontplate+steerer)
	Bolts M6 for 31.8mm stem, set of 6 pieces (frontplate+steerer)
	Shim 25.4mm / 22.2mm
FURY v.2/v.1	Bolts M6 for 25.4mm stem, set of 6 pieces (frontplate+steerer)
	Bolts M6 for 31.8mm stem, set of 6 pieces (frontplate+steerer)
SEAT POSTS	
	Shim 25.4/27.2mm
PEDALS	
FEVER v.2/v.1	Bearing (for Fever v.2/v.1)
	Axle, for right pedal (for Fever v.2)
	Axle, for left pedal (for Fever v.2)
	Axle, for right pedal (for Fever v.1)
	Axle, for left pedal (for Fever v.1)
	Pins, set for a pair
	Screwed side cap, (for Fever v.2/v.1)
STREAM PRO	Bearing
	Axle, for right pedal
	Axle, for left pedal
	Pins, set for a pair (for Stream Pro and Stream pedals)
	Screwed side cap
	O-ring for axle, pair
CANDY PRO	Body, with bushing and screwed side cap (all colors)
	Bearing
HEADSETS	
	Top cap Ride Your Way, with bolt and star nut (all colors)
	Bearing 41x30.15x7mm, 45x45", titanium coated
	Bearing 42.8x30.5x8mm, 45x45", titanium coated
	Bearing 52x40x8mm, 45x45", titanium coated
	Reduction crown race 1.5" to 1.1/8", for Blink, Blaze, Astro and Spin
GRIPS	
	Alu lock ring (left+right), for Roots and Icon
	Alu bar end (left+right), with alu and plastic caps, for Roots
	Alu bar end (left+right), for Icon
	Bar plugs Block, pair (all colors), for BMX grips

ROOTS

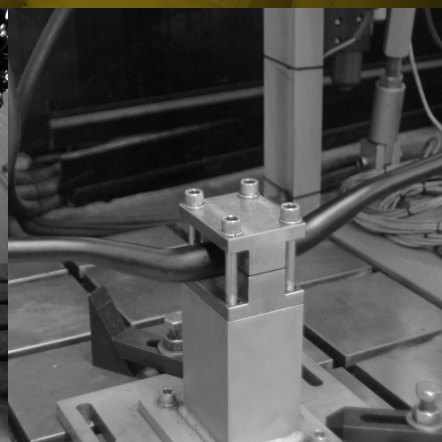
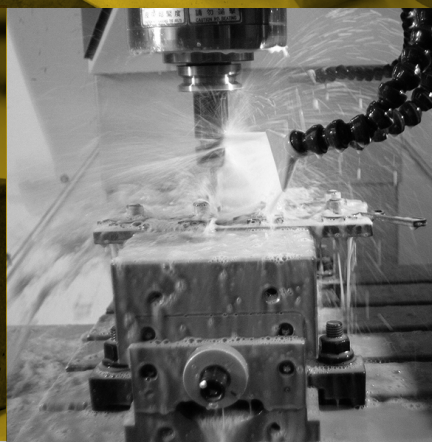
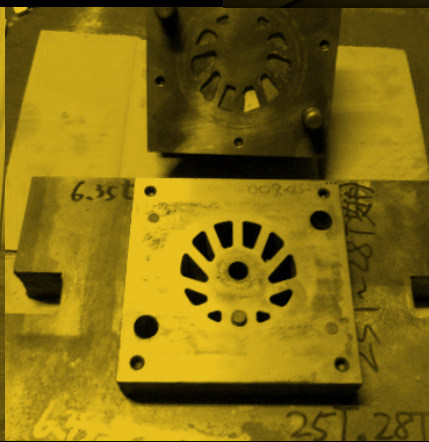
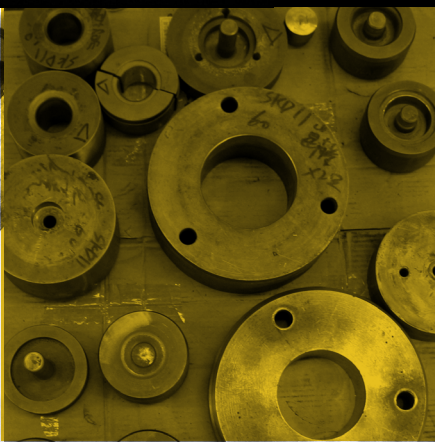
DARTMOOR

DARTMOOR BIKES



Gravity bikes need to be strong, agile, reliable and have the ability to cut through the trail like a scalpel. There is no room for mistakes if you want to avoid those big offs flow let along some bruises. Different types of terrain need a bike that can adapt to this sort of trail. Bikes are getting faster and need to cope with the speed of the top ten riders in the world cups. Of course not every trend is going in the right direction. This is why our designers ride everything themselves. It is important our bikes are developed by riders not a computer simulation.

For the last 8 years our head designer, **Jan Kiliński**; who used to be one of the top freestyle riders in Poland, has been keeping an eye on every part we make. He tests every part himself even they were tested before in the factory, sometimes with 130% load of their intended strength test. Then parts are handed out to the riders, this is the real test where products are abused to destruction. Only then we can trust our components. Thanks to this process, we can still produce one of the best bike parts for the gravity scene and share fun of riding with you.



**DART
MOOR
Bikes**

dartmoor-bikes.com



facebook.com/dartbikes



instagram.com/dartmoor_bikes#