

← Kiepury

anski
LUTY
LETNI
www.sinfonteras.pl

1050



DARTBMX2014



DARTBMX

DartBMX is a fresh BMX brand with input directly from our Polish and international BMX crew. Our inspiration comes directly from the riders, who are very important to us. We proudly support young and talented riders all over the World. Our aim is to bring you the best products - by riders for the riders.

DAWID GODZIEK

Date of birth: 10.08.1994

Where are you from?
Suszec, Poland.

What was your best moment in 2013?
Surely, it was my trip to Red Bull Dreamline. It was much different comparing to other trips. My first big contest in USA. The jumps were awesome, great place and atmosphere.

Why did you choose BMX among many others disciplines?
Since I was a kid, together with my brother we've been fooling around on bikes. The ordinary riding was not enough, so that we decided to try some tricks.

What is your best trick?
Frontflip barspin to no hand.

Is there anything that scares you while on your bike?
Well, to be honest I've never thought of such thing.

What do you like to do when you are not riding?
When I'm not riding on BMX, I'm having fun with everything that has wheels, e.g. cars, motorcycles, etc.

What makes you push the whole thing forward?
It's quite simple. I'm just riding and learning new tricks, because the old ones are boring. I'm taking part in contests, because it's a way to see new places and meet new people.

What is your favorite BMX video?
Right now, I don't watch any videos.

Tricks or flow?
At first I learn the trick. Then I'm working on style, so basically both.

The best place you have been to until now?
California.

Is there someone, who motivates you?
Everyone, with whom I'm riding at the particular moment, motivates me.

How would you cheer up young kids to start riding?
BMX can become your way of living, only when you're doing it with passion, instead of chasing goals. And try not to learn tailwhips at least in the first year (laugh).

What are your plans for 2014?
I'm planning to have better season then the previous one and I want to avoid any injuries.



RIKKU

Rikku is a straight out of the box all round high quality complete bike, which definitely meets requirements of the advanced riders. It features a 100% chromoly frame with integrated head tube, chromoly fork and handlebar, sealed hubs and ultra light Maxxis Grifter tires. The 2014 version comes in the new golden raw finish. The bike now stands out comparing to the other complete setups.

SPECIFICATION:

- **Frame:** Rikku, 100% Cr-Mo 4130, TT 20.6", CS 13.5", integrated seat clamp, 5mm thick heat-treated dropouts
- **Fork:** Rikku, 100% Cr-Mo 4130, 5mm thick dropouts, tapered legs, offset: 33mm
- **Handlebar:** custom design, 100% Cr-Mo 4130, rise: 8.25", width: 28", backsweep: 11°, upsweep: 3°
- **Grips:** Block, length: 155mm
- **Stem:** alu front load, reach: 50mm
- **Headset:** integrated, sealed bearings
- **Crank:** 175mm, heat-treated, 3-pc tubular chromoly, 8 splines, axle diameter: 19mm
- **Pedals:** Cookie PC
- **BB:** Spanish 19mm, press fit, sealed bearings
- **Sprocket:** Peacock 25T, alu 6061, CNC, 6.5mm thick
- **Chain:** Core 1/8"
- **Front hub:** 3/8" male axle, sealed bearings, 36H
- **Rear hub:** Sector OEM Cassette, 14mm male axle, sealed bearings, RHD 9T driver, 36H
- **Spokes:** steel with brass nipples, black
- **Rims:** Shining, double wall, 36H
- **Front tire:** Maxxis Grifter 2.1"
- **Rear tire:** Maxxis Grifter 1.85"
- **Seat:** Sticky Combo
- **Brake/lever:** Rikku (OEM brake)
- **Pegs:** steel (1 pair), 38x110mm
- **Weight:** 10.5kg / 23.14lbs. (w/o pegs)



OZZY

Ozzy is our bike directed towards the youngest BMX riders. We designed it to meet their specific requirements – small geometry of the frame will make the bike control far more easier for those, who make their first steps into BMX world. With Ozzy you can have a strong bike equipped with many aftermarket parts in a truly affordable price. The 2014 version comes in a stunning red clear coated finish and one more size option perfect for the bigger riders.

SPECIFICATION:

- **Frame:** Ozzy, DT Cr-Mo 4130, TT 19.5"/CS 13" and TT 20.6"/CS 13.5" integrated seat clamp, 5mm thick heat-treated dropouts
- **Fork:** Ozzy, Cr-Mo 4130 steerer tube, 5mm thick dropouts, offset: 33mm
- **Handlebar:** custom design, 100% Cr-Mo 4130, rise: 8.25", width: 28", backsweep: 11°, upsweep: 3°
- **Grips:** Block, length: 155mm
- **Stem:** alu front load, reach: 50mm
- **Headset:** integrated, sealed bearings
- **Crank:** 175mm, heat-treated, 3-pc tubular chromoly, 8 splines, axle diameter: 19mm
- **Pedals:** Cookie PC
- **BB:** Spanish 19mm, press fit, sealed bearings
- **Sprocket:** 25T, steel
- **Chain:** Core 1/8"
- **Front hub:** 3/8" axle, loose ball bearings, 36H
- **Rear hub:** Sector OEM Cassette, 14mm male axle, sealed bearings, RHD 9T driver, 36H
- **Spokes:** steel with brass nipples, silver
- **Rims:** Shining, double wall, 36H
- **Front tire:** Innova 2.0"
- **Rear tire:** Innova 2.0"
- **Seat:** Sticky Combo
- **Brake/lever:** Ozzy (OEM brake)
- **Weight:** 11.1kg / 24.46lbs





ALIN MOLDOVAN

Date of birth: 22nd of January 1986

Where are you from?

Baia Mare city, Northern Romania.

What was your best moment in 2013?

To get around with Ed Zunda and David Budko for a video part, even though I had an injury that kept me out of riding for almost three months.

Why did you choose BMX among many others disciplines?

It's amazing to be able to ride a bike and do whatever you want to do, when cruising down the streets.

What is your best trick?

I don't know... It's 5050 to hard whip I think.

Is there anything that scares you while on your bike?

If you enjoy it enough, there is nothing to be scared of.

What do you like to do when you are not riding?

Snowboarding with the homies.

What makes you push the whole thing forward?

To see new places and to do it your own way.

What is your favorite BMX video?

Deadline DVD - Garrett Reynolds part was impossible.

Tricks or flow?

The flow keeps it spinning and the tricks are the steps you want to do.

The best place you have been to until now?

Barcelona...

Is there someone, who motivates you?

My girlfriend and I'm not joking.

How would you cheer up young kids to start riding? (or not to stop riding)

Enjoy it as much as you can.

What are your plans for 2014?

To ride a lot and go for a trip around Spain.





THUG

Thug is a new street dedicated frame from DartBMX. Strong and tough ghetto warrior designed especially for those of you who like the urban playground. Its responsive geometry was created to help you maintain proper balance with manuals and make the rotations easier. The frame comes with strong dropouts which will survive heavy grinding, laser cut gussets, CNC machined BB tube, built-in chain tensioners, removable pivots, cable hanger and gyro tabs. Thug was inspired by ideas from our riders. **Alin Moldovan** helped to create the street machine that you've always wanted. **Łukasz Wysokiński** was also involved in the process of heavy duty testing.

- **Material:** Sanko Cr-Mo 4130, butted TT, DT and ST
- **Heat-treatment:** dropouts, BB and HT
- **TT length:** 20.7", 20.9"
- **CS length:** adjustable 13"-13.65"
- **HT angle:** 75.5°
- **ST angle:** 70°
- **BB height:** 11.5"
- **Standover:** 8.8" (from BB center to TT center)
- **ST height:** 10" (from BB center to ST top)
- **Headset type:** integrated (45/45 Campy spec.)
- **Gusset:** two external gussets
- **BB:** Spanish 68mm
- **Seat clamp:** integrated
- **Dropouts:** 6mm thick, 14mm size
- **Weight:** 2.26kg / 4.98lbs. (20.7")
- **Available spare parts:** seat clamp bolt, gyro tabs, pivots, chain tensioner bolts

SAITO STREET

Lightweight street specific fork designed for peg use. Shortened offset to 26mm helps with front wheel balance. Made of triple butted Cr-Mo 4130 steel. Post-weld heat-treated. Molded bottom section of the legs. 1-piece CNC machined steerer tube.

- **Material:** 100% Cr-Mo 4130
- **Heat-treatment:** post weld
- **Height:** 314mm
- **Steerer tube length:** 165mm
- **Offset:** 26mm
- **Crown race:** integrated (45/45 Campy)
- **Dropouts:** 5mm thick, laser-cut
- **Top cap:** alu 7075, M25x1.5mm
- **Weight:** 868g / 30.61oz.
- **Available spare parts:** top cap



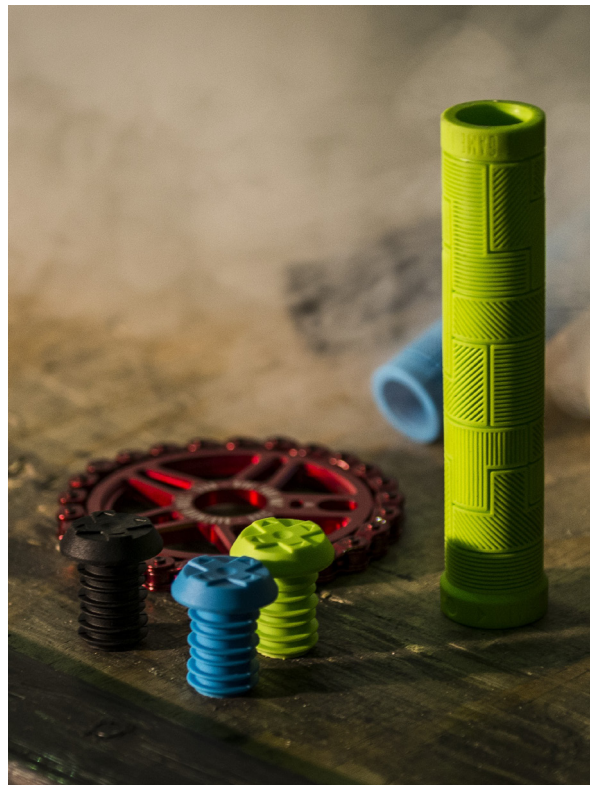


NAMI V.3

Third edition of very popular **Dawid Godziek's** signature frame comes now also in a very special red clear coated finish. The frame has strong tubes made from famous Japanese Sanko Cr-Mo steel and comes with integrated gusset under the head tube, long seat tube and chain tensioners built-in dropouts. Nami v.3 comes in three different sizes, which varies not only in head tube length, but also every size has different chainstay length. It makes the frame more universal in order to fit all the riders' needs within every style of riding (dirt, street, park).

- **Material:** Sanko Cr-Mo 4130, butted TT, DT and ST
- **Heat-treatment:** dropouts, BB and HT
- **TT length:** 20.5", 20.75", 21"
- **CS length:** 13" (20.5"), 13.25" (20.75"), 13.5" (21")
- **HT angle:** 75°
- **ST angle:** 71°
- **BB height:** 11.5"
- **ST height:** 8.5"
- **Headset type:** integrated (45/45 Campy spec.)
- **Gusset:** DT integrated
- **BB:** Spanish 68mm
- **Seat clamp:** integrated
- **Dropouts:** 6mm thick, 14mm size
- **Weight:** 2.18kg / 4.81lbs. (21")
- **Available spare parts:** seat clamp bolt, gyro tabs, pivots, chain tensioner bolts





YUKI V.2

Second version of the lightweight DartBMX skatepark frame. Comparing to the v.1 model Yuki v.2 has far more stronger tubes made of 4130 Cr-Mo Sanko steel and comes with integrated gusset under the head tube and chain tensioners built in dropouts. Thanks to all these changes Yuki v.2 can even handle some street riding but first of all this is signature frame of **Viktors Kronbergs** – one of the very best park riders in the middle-east Europe.

- **Material:** Sanko Cr-Mo 4130, butted TT, DT and ST
- **Heat-treatment:** dropouts, BB and HT
- **TT length:** 20.8
- **CS length:** 13.5"
- **HT angle:** 75°
- **ST angle:** 71°
- **BB height:** 11.5"
- **ST height:** 6.8"
- **Headset type:** integrated (45/45 Campy spec.)
- **Gusset:** DT integrated
- **BB:** Spanish 68mm
- **Seat clamp:** integrated (Strawberry)
- **Dropouts:** 6mm thick, 14mm size
- **Weight:** 2.10kg / 4.63lbs.
- **Available spare parts:** integrated seat clamp, gyro tabs, pivots, chain tensioner bolts



SAITO PARK

Lightweight park specific fork created for park/dirt riders. Designed to provide stability and control at high speed. Made of triple butted Cr-Mo 4130 steel. Post-weld heat-treated. Molded bottom section of the legs. 1-piece CNC machined steerer tube.



- **Material:** 100% Cr-Mo 4130
- **Heat-treatment:** post weld
- **Height:** 314mm
- **Steerer tube length:** 165mm
- **Offset:** 30mm
- **Crown race:** integrated (45/45 Campy)
- **Dropouts:** 4mm thick, laser-cut
- **Top cap:** alu 7075, M25x1.5mm
- **Weight:** 804g / 28.36oz.
- **Available spare parts:** top cap



VIKTORS KRONBERGS

Date of birth: August 27th, 1991

Where are you from?

I am from Latvia, Ventspils – nice city near the Baltic Sea.

What was your best moment in 2013?

So far, year 2013 was one of the most successful for me. All competitions where I participated got me prizes! But the best I guess was in Germany at BMX Worlds, where I got 3rd place.

Why did you choose BMX among many others disciplines?

I've tried almost everything – inline, skateboarding, but bike was "that thing". I remember myself riding bikes since I was kid. BMX gives more adrenaline, amplitude, opportunity to test myself in making crazy tricks.

What is your best trick?

Well, it is hard to say... I know that the craziest tricks are to come and you all gonna see them (haha!).

Is there anything that scares you while on your bike?

From my experience I can tell that the scariest thing is the possibility to get injured and not because it hurts, but because when I am injured I cannot ride and riding is my life. Another thing that scares me is a possibility that the trick won't work. But I think that BMX rider should not be scared of anything – when I ride, I try to keep my mind empty, so that there are no doubts.

What do you like to do when you are not riding?

I spend my time with friends – they all are great people. I also like cars – driving, doing some mechanical stuff etc.

What makes you push the whole thing forward?

My dream. And my dream is to become one of the recognized BMX riders in the world. With my achievements I want to promote my country's name and also my city Ventspils, because people there are very supportive.

What is your favorite BMX video?

I don't have any particular. I've got many riders, I'm looking up to. I want to be as good as they are. However, in a different way, with my own style. I think the best video is yet to come and this is gonna be with me in the leading role.

Tricks or flow?

Definitely tricks. I get stoked when I'm doing tricks. It's crazy, it's a rush of adrenalin. This is why I prefer riding dirt.

The best place you have been to until now?

The best place I've ever been to is every place that I've visited so far.

Is there someone, who motivates you?

I am the best motivation for myself. Because BMX is my life and I want my life to be successful, I want to live it to fullest.

How would you cheer up young kids to start riding?

Guys, it's fun! It's a crazy life, full of adrenalin. It is also a good way to stay fit and if you become a good rider, you can travel around the world and participate in competitions.

What are your plans for 2014?

I want 2014 be even more successful than 2013. I plan to participate in some of the best BMX contests in Europe.



PAWEŁ WICHOWSKI

Date of birth: 13.02.1993

Where are you from?

Ursynów/Warsaw/Poland.

What was your best moment in 2013? (connected with bmx, riding, etc.)

Filming with My crew (Le FLED Groupe) for our mixtape was the best time in 2013.

Why did you choose BMX among many others disciplines?

Probably because skateboarding was too hard for me.

What is your best trick?

Tailwhip.

Is there anything that scares you while on your bike?

Heights, speed and the government.

What do you like to do when you are not riding?

Cooking, getting tired in a different way, grilling and chilling.

What makes you push the whole thing forward?

My back pain.

What is your favorite BMX video? (an edit, a long video, which and why?)

"Left Right" by Ryan Navazio is my number one. I also like Empire's "Chill Bro", which was the first BMX movie I saw.

Tricks or flow?

I'm still able to learn tricks.

The best place you have been to until now?

Berlin, Germany in 2010.

Is there someone, who motivates you?

My friend Cinek.

How would you cheer up young kids to start riding?

B.M.X. is not a sport, should not be participated at P.E. lessons in elementary schools and pink/sky-blue is not it's colour! Hope that you'll understand.

What are your plans for 2014?

I haven't been abroad for a long time. Who knows...



FLOW

2-pc strong and lightweight bars made of 13-buttet 100% Cr-Mo 4130 steel tubes. Post-weld heat-treated. Available in three sizes: 9", 8.5" and 8.25".

- **Material:** 100% Cr-Mo 4130, 13-buttet
- **Heat-treatment:** post weld
- **Rise:** 9", 8.5", 8.25"
- **Width:** 30" (9"), 28.5" (8.5"), 28" (8.25")
- **Upsweep:** 3°
- **Backsweep:** 12°
- **Crossbar height:** 6.55" (9"), 6.25" (8.5"), 6" (8.25")
- **Crossbar diameter:** 3/4"
- **Weight:** Flow 9 - 770g / 27.16oz.
Flow 8.5 - 730g / 25.75oz.
Flow 8.25 - 708g / 24.97oz.



REIGN

DartBMX flagship front load stem made of cold forged/CNC machined alu 7075-T6 with special internal and external machining and hollow clamp/pinch bolts to save weight. Classic style and chamfered edges for a clean look.

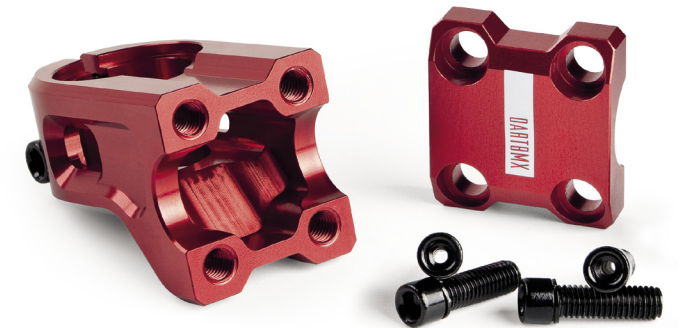
- **Reach:** 50mm
- **Stack height:** 30mm
- **Rise:** 9mm
- **Clamp/pinch bolts:** hollow M8x1.25mm (x6)
- **Weight:** 235g / 8.29oz.
- **Available spare parts:** M8 hollow bolts



REFLECT V.2

Ultra light front load stem with extensive internal machining and hollow clamp/pinch bolts. Made of cold forged/CNC machined alu 7075-T6.

- **Reach:** 50mm
- **Stack height:** 30mm
- **Rise:** 9mm
- **Clamp/pinch bolts:** hollow M8x1.25mm (x6)
- **Weight:** 218g / 7.69oz.
- **Available spare parts:** M8 hollow bolts



PRIME

45/45 Campy style headsets with low profile alu 2014 upper cover. High quality precision sealed bearings with anti-rust titanium coating. Custom compression cap included.

- **Stack height:** 5.4mm
- **Bearings size:** 41.8x30.5x8mm
- **Weight:** 61g / 2.15oz. (w/o compression cap)
- **Available spare parts:** bearings, compression top cap

BARTEK KOPIEC

Date of birth: 19.08.1993



Where are you from?
Katowice, Poland.

What was your best moment in 2013?
It was my eurotrip, during which I visited Barcelona. It was incredible time - visiting new places, meeting new people and enjoying the very trip life.

Why did you choose BMX among many others disciplines?
It was all thanks to my brother, who used to ride 20". He was the one who got me into BMX and I'm really grateful for that.

What is your best trick?
Every new combo with manuals makes me happy and I treat them as a progress.

Is there anything that scares you while on your bike?
High and steep rails. I'm a technical rider and doing such rails is not pleasant for me. I'd rather go for something with backwards manual.

What do you like to do when you are not riding?
I like to spend time on filming and gathering clips with my friends. It's my second passion after riding. It is also connected with my education.

What makes you push the whole thing forward?
The best way to progress is to go on a road trip with friends. When you're riding at new places it gives a lot possibilities. It's all about you and your crew and many adventures - that's the most important thing.

What is your favorite BMX video?
Summer of Fit. It's 40 minutes of trips from LA to San Francisco. This video is absolutely perfect with its soundtrack, editing and riding, of course. Although, it's been released in 2007 it's truly timeless.

Tricks or flow?
Tricks with flow! I love to put tricks together into combinations, but after all it's sometimes good to pull a big 360 off the stairs with harsh landing.

The best place you have been to until now?
Barcelona and Marseille with its world famous concrete bowls.

Is there someone, who motivates you?
I like to watch Devon Smillie, Eric Lichtenberger and Tony Malouf. From Polish scene I'd choose Mateusz Niepokój, Michał Mycek and Michał Horowicz.

How would you cheer up young kids to start riding?
You don't have to be the best to experience some of the most remarkable moments of your life thanks to BMX.

What are your plans for 2014?
I want to travel a lot with my bike, visit Barcelona for the third time, get clips and have fun!

Where are you from?
I'm from Olsztyn, but right now I'm living in Warsaw and I plan to stay here for a while.

What was your best moment in 2013?
The entire 2013 season was very good for me. If I had to pick one contest, I would choose Baltic Games. Great competition, summer, sea, etc.

Why did you choose BMX among many others disciplines?
Because nothing else would provide me with such adrenaline rush. It's also about the individuality at what I'm doing.

What is your best trick?
Flair barspin is one of my best tricks.

Is there anything that scares you while on your bike?
The only thing that scares me is a first try of a new trick. On the other hand, it really pumps me up!

What do you like to do when you are not riding?
I really enjoy cooking, so that I cook a lot. I'm playing a bit on Playstation. I also go to the gym and swimming pool from time to time.

What makes you push the whole thing forward?
I just love to ride. Everyday, I want to learn new stuff and improve my skills.

What is your favorite BMX video?
Park edits. I'm always checking all the sites to look for something new.

Tricks or flow?
Tricks, of course. But only those landed on ramps, not on the flat ground. Everybody has a unique style of performing tricks and it's incredible.

The best place you have been to until now?
Motion Ramp Park in Bristol, UK

Is there someone, who motivates you?
I'm glad to be supported by my girlfriend and my parents. They're always optimistic about my riding. Sometimes they're even more happy with it than myself.

How would you cheer up young kids to start riding? (or not to stop riding)
Try to be yourself! Don't follow trends. Don't be afraid of riding other places than your friends do. Everyone has had a harsh crash - it's a part of this sport!

What are your plans for 2014?
To film new edits, hit some contests abroad and to visit a few foreign spots.



RAFAŁ KIERC

I was born on October 25th, 1992

THORN BMX

2-pcs design cranks made of heat-treated 100% Cr-Mo 4130 steel. Shorter spindle perfectly fits BMX frames. Two sprocket holes to fit all sprocket sizes. Small gusset to make the pedals assembly area stronger. Includes arms, spindle (welded to the right arm), spindle bolts (x2), sprocket bolts (x2), assembly/disassembly tool.

FLARE

2.5-pcs design cranks made of heat-treated 100% Cr-Mo 4130 steel. Two sprocket holes to fit all sprocket sizes. Small gusset to make the pedals assembly area stronger. Includes arms, spindle (pressed into the right arm), spindle bolt (x1), sprocket bolts (x2), assembly tool.

- **Arms length:** 170 mm
- **Spindle:** 19mm hollow
- **Spindle splines:** 48
- **Spindle bolt:** Cr-Mo M12x1mm (6mm Allen key)
- **RHD/LHD compatible**
- **Hollow bigger sprocket bolt**
- **Weight:** 814g / 28.71oz.
- **Available spare parts:** Cr-Mo spindle bolt

KEIPO

3-pcs design cranks made of heat-treated 100% Cr-Mo 4130 steel. Two sprocket holes to fit all sprocket sizes. Small gusset to make the pedals assembly area stronger. Includes arms, spindle, Cr-Mo spindle bolts (x2), sprocket bolts (x2), pinch bolts (x2). Alu spindle bolts available as separate spare parts.

- **Arms length:** 175 mm
- **Spindle:** 19mm hollow
- **Spindle splines:** 16
- **Spindle bolts:** Cr-Mo M12x1mm (6mm Allen key)
- **Pinch bolts:** M6x1mm
- **RHD/LHD compatible**
- **Hollow bigger sprocket bolt**
- **Weight:** 835g / 29.45oz.
- **Available spare parts:** spindle, alu spindle bolts, Cr-Mo spindle bolts, pinch bolts

CUTTER

Strong half-link chain. Silver, dark grey and nano coating color options. Tested by our riders!!.

- **Width:** 1/8"
- **Length:** 102 links
- **Weight:** 319g / 11.25oz. (for 72 links)



CHUKKA TWO

Reliable, entry level BMX 3-pcs cranks. Crankarms made of 4130 Cr-Mo steel seamless tubes. 19mm axle with 8 splines. With steel crank bolts and sprocket bolt included. Available spare parts: axle, steel crank bolts, pinch bolt M8x1.25

- **Arms length:** 175 mm
- **Spindle:** 19mm
- **Spindle splines:** 8
- **Pinch bolts:** M8x1.25mm
- **Weight:** 1100g / 38.79oz.
- **Available spare parts:** spindle, Cr-Mo crank bolts, pinch bolts

CORE

Strong chain with drilled top side plates. Masterlink included. Painted color options.

- **Width:** 1/8"
- **Length:** 102 links
- **Weight:** 276g / 9.73oz. (for 72 links)



BB-S

Spanish/Mid/Euro standard bottom bracket bearings. For 2014 we will offer Pro Series with top quality bearings and refined cones that reduce the amount of spacers needed for installation and reliable Intro Series for the entry level riders with affordable price. Two inner sleeves for 68mm and 73mm bottom bracket shells and a set of alu spacers included.

Pro series (turquoise inner sleeves):

- **Diameter:** 19mm, 22mm
- **Weight:** Spanish - 117g / 4.13oz. (19mm); 86g / 3.03oz. (22mm)
Mid - 168g / 5.93oz. (19mm); 154g / 5.43oz. (22mm)
Euro - 127g / 4.48oz. (19mm); 93g / 3.28oz. (22mm)

Intro series (black inner sleeves):

- **Diameter:** 19mm
- **Weight:** Spanish - 135g / 4.76oz.
Mid - 184g / 6.49oz.
Euro - 142g / 5.01oz.





RAIDER

Double wall, three chambers lightweight rim made of alu 6061-T6. Intended for front or rear wheel brakeless applications.

- **Width:** 31.4mm
- **Height:** 21mm
- **ERD:** 384mm
- **Holes:** 36H, 32H (black only)
- **Seam:** Pinned
- **Weight:** 405g / 14.28oz.



RIM TAPE

Long lasting rim tape made of impregnated nylon with DartBMX printed logo.

Width: 26mm, **Size:** 20"



FORTRESS

Double wall, three chambers rim made of alu 6061-T6. Perfect for rear or front wheel applications. U-Brake compatible.

- **Width:** 32.4mm
- **Height:** 21mm
- **ERD:** 384mm
- **Holes:** 36H, 32H (black only)
- **Seam:** Pinned
- **Weight:** 485g / 17.10oz.

TORCH

Welded BMX rim with double walls and two chambers. Made of high end aluminium 6066 aluminium. Very strong and perfect for rear or front wheel applications. U-Brake compatible.

- **Width:** 34mm
- **Height:** 17.7mm
- **ERD:** 390mm
- **Holes:** 36H
- **Seam:** Welded
- **Weight:** 486g / 17.10oz.



STAR

Fully CNC machined sprocket made of alu 7075-T6 with a custom star design. Adapters for 19mm and 22mm axle included.

- **Size:** 25T, 28T
- **Teeth:** 1/8"
- **Bore:** 15/16"
- **Thickness:** 6mm
- **Adapter:** 19mm and 22mm included
- **Weight:** 70g / 2.46oz. (25T)
75g / 2.64oz. (28T)
- **Available spare parts:** adapter for 19mm and 22mm spindle

PEACOCK

Molded BMX sprocket made of alu 6061-T6 with CNC machined teeth. High quality available at affordable price. Adapter for 19mm included.

- **Size:** 25T, 28T
- **Teeth:** 1/8"
- **Bore:** 15/16"
- **Thickness:** 6.35mm
- **Adapter:** 19mm included
- **Weight:** 78g / 2.75oz. (25T)
84g / 2.96oz. (28T)
- **Available spare parts:** adapter for 19mm and 22mm spindle



BLOCK

Soft flangeless grips made of durable compound comfortable for both, gloves users and people who prefer to ride with bare hands. Low profile, multiple direction Tetris blocks style pattern offers a perfect grip for better control and corresponds to the 'Every block is different but game is the same' slogan molded on the grip ends.

As you know every player needs a proper joystick to enjoy the game, so we included a very special nylon bar ends. They are made of two sections to fit both - cr-mo and alu bars and their pad controller looking design tease you to start the game now!

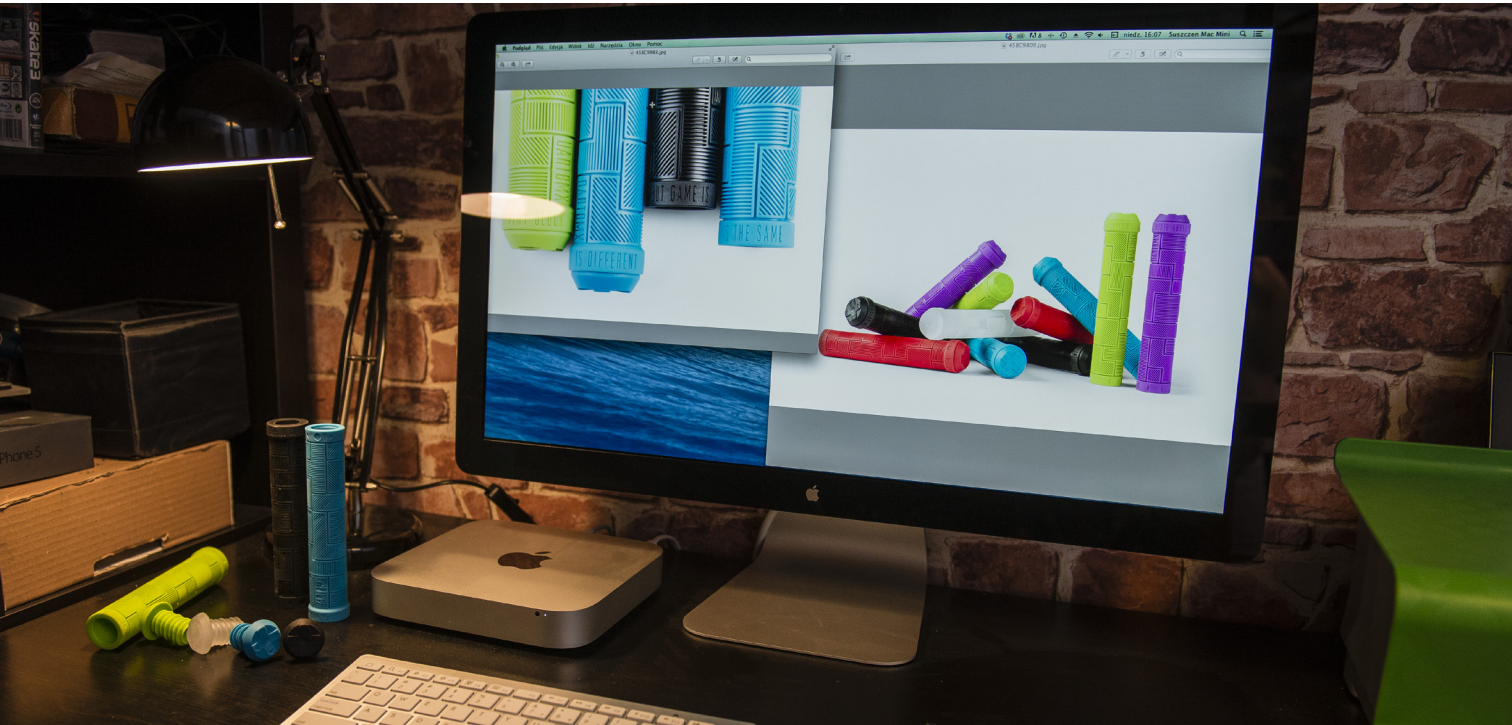
- **Length:** 155mm
- **Diameter:** 29mm
- **Bar Ends:** nylon, 2-section, screw type
- **Weight:** 96g / 3.39oz.
- **Available spare parts:** Block bar ends



SHAMANN

High flanges grips made of special rubber compound with increased durability comparing to Kraton for the same softness.

- **Length:** 150mm
- **Diameter:** 30mm
- **Bar Ends:** nylon, screw type
- **Weight:** 154g / 5.43oz.



CANDY PRO

Ultralight low-profile pedals with platform made of nylon. Axle made of cr-mo steel with an additional assembly mount for the 15mm wrench key. 2 sealed bearings and DU-bushing for perfect and smooth rotation. Ten pins on both sides to ensure maximum grip.

- **Platform size:** 111x105mm
- **Height:** 18.5mm
- **Spindle:** Cr-Mo 4130
- **Bearings:** sealed
- **Weight:** 270g / 9.52oz.
- **Available spare parts:** pedal body, bearing, axle right/left



COOKIE

Lightweight pedals made of nylon. Knurled surface and 12 molded pins per side for maximum traction.

- **Platform size:** 90x95mm
- **Height:** 23mm
- **Spindle:** Cr-Mo 4130 (15mm wrench or 6mm Allen key)
- **Bearings:** unsealed
- **Weight:** 315g / 11.11oz.



ŁUKASZ WYSOKIŃSKI

Date of birth: 10th of December 1992

Where are you from?

From Poland, the capital of vodka.

What was your best moment in 2013? (connected with bmx, riding, etc.)

Baltic Games 2013 - the best parties, the best competition I've ever been to and I met my love there.

Why did you choose BMX among many others disciplines?

Because BMX requires two balls. I love adrenaline it gives and girls like it :D.

What is your best trick?

Manual 180!

Is there anything that scares you while on your bike?

Definitely twisted ankles...

What do you like to do when you are not riding?

I'm meeting my GF, partying hard and riding my Golf MK3.

What makes you push the whole thing forward?

"Go Big or Go Home".

What is your favorite BMX video?

"Stay Fit" and "Fit Life", because I really love the old FitBikeCo team: Chase Hawk, Mike Aitken, Chase Dehart, etc.

Tricks or flow?

Definitely flow! It's not hard to learn crappy looking barspin. The point is make it look good!

The best place you have been to until now?

With bike? South bank in the UK - it's a legendary spot!

Is there someone, who motivates you?

Mike Aitken.

How would you cheer up young kids to start riding?

I'm not the very best in motivating kids with my advice. You would have to cut it anyway.

What are your plans for 2014?

I don't know, everything can happen.

Where are you from?

Katowice, Poland.

What was your best moment in 2013?

Learning some new tricks that I've always wanted to pull and finally focusing on dirt riding.

Why did you choose BMX among many others disciplines?

Mainly because of the adrenaline it gives and the feeling of freedom.

What is your best trick?

Backflip turndown and flair combos.

Is there anything that scares you while on your bike?

I'm always afraid of being injured in a silly way.

What do you like to do when you are not riding?

I'm very much into cars, when I'm not doing anything connected with BMX.

What makes you push the whole thing forward?

Dirt scene in Poland is kind of abandoned right now. The less popular it is, the more I want to be a part of it.

What is your favorite BMX video?

I've stopped watching them a while ago. From the ones I've seen, I'd choose "Sentenced to Life" and "Drop the Hammer". They're both worth checking.

Tricks or flow?

Tricks used to be in the first place for a long time, but right now I'd go for flow.

The best place you have been to until now?

Berlin and the old "Mellowpark" - a place with huge past in the European BMX.

Is there someone, who motivates you?

The fact that I'm still learning new tricks motivates me a lot.

How would you cheer up young kids to start riding?

Turn off the internet and go ride your bike!

What are your plans for 2014?

To ride even more than I did before.



MACIEK KIWAK

Date of birth: 16.02.1989

RIOT

One of the lightest freecoaster hubs on the market. It comes with pawls and springs installed to work in the freecoaster mode. The second set of pawls and springs is also included in the box and if you want to - you can switch them in the driver to ride this hub as a regular cassette hub. This way you may own one of the most versatile BMX hubs around. The slack in freecoaster mode can be adjusted too by one of the three slack adjustment rings (one is installed in the hub and the other two can be purchased separately).

- **Hub shell:** forged/CNC machined alu 6061-T6
- **Axle:** Cr-Mo 3/8"x24T, heat-treated
- **Nuts:** Cr-Mo for 17mm wrench
- **Cones:** alu 7075
- **Bearings:** 5 precision sealed bearings (x3 in driver, x2 in hub shell)
- **Driver:** Cr-Mo 1-pc, 9T
- **Pawls:** 3 pawls design with 3 individual springs
- **Driving direction:** only RHD
- **Engagement points:** 24 (only in cassette mode)
- **Holes:** 36H
- **Weight:** 459g / 16.1oz.
- **Available spare parts:** 9T RHD driver, pawls/springs, male axle, slack adjusting rings, cones, nuts



RAZOR V.2

Top quality lightweight rear cassette hub with 9T driver and 6 big pawls located in the body (Q-Lite system). With female Cr-Mo axle and hollow Cr-Mo bolts included. Razor v.2 has threaded cone from the driving side to better protect bearings inside the driver when tightening the bolts and changed distance between bearings in hub shell.

For 2014 there is also a male axle conversion kit available as spare part for this hub.

- **Hub-shell:** alu 6061-T6
- **Axle:** female Cr-Mo 4130, heat-treated (accepts 8mm hex head)
- **Bolts:** hollow Cr-Mo 3/8"x24T, heat-treated (17mm wrench or 8mm Allen key)
- **Optional Bolts:** solid Cr-Mo 3/8"x24T, heat-treated (recommended for use with pegs)
- **Cones:** alu 7075 (threaded from the driving side)
- **Bearings:** 5 precision sealed bearings (x3 in driver, x2 in hub shell)
- **Driver:** Cr-Mo 1-pc, 9T
- **Pawls:** 6 pawls design with 6 individual, double springs (Q-lite)
- **Engagement points:** 30
- **Holes:** 36H
- **Weight:** 423g / 14.92oz. (Cr-Mo axle)
351g / 12.38oz. (alu axle)
- **Available spare parts:** 9T driver, pawls/springs, female axle, male axle conversion kit, Q-lite bearing, cones, hollow bolts, solid bolts



RAZOR V.2/V.1 HUBGUARDS

CNC machined hubguards made of alu 7075-T6 to protect non-drive side flange. Separate versions for Razor and Razor v.2 rear hubs.

- **Designed to replace side cone**
- **Diameter:** 68mm
- **Height:** 21mm
- **Weight:** 49g / 1.73oz.



SECTOR V.2/V.1 HUBGUARDS

CNC machined hubguard made of alu 7075-T6 to protect non-drive side flange. One version for both: Sector and Sector v.2 rear hubs.

- **Designed to replace side cone**
- **Diameter:** 68mm
- **Height:** 21mm
- **Weight:** 46g / 1.62oz.

SECTOR V.2

High quality rear cassette hub with 9T driver, 6 pawls and 5 sealed bearings. Sector v.2 is available in two separate versions - with just right hand drive (RHD) or just left hand drive (LHD) and with upgraded springs construction in the driver. It comes with 14mm hollow Cr-Mo axle.

- **Hub-shell:** alu 6061-T6
- **Axle:** 14mm Cr-Mo 4130, heat-treated (accepts 8mm hex head)
- **Nuts:** Cr-Mo for 17mm wrench
- **Cones:** alu 7075
- **Bearings:** 5 precision sealed bearings (x3 in driver, x2 in hub shell)
- **Driver:** Cr-Mo 1-pc, 9T
- **Pawls:** 6 pawls design with 6 individual springs
- **Driving direction:** only RHD or only LHD
- **Engagement points:** 48
- **Holes:** 36H
- **Weight:** 478g / 16.86oz. (with Cr-Mo nuts)
- **Available spare parts:** 9T RHD or LHD driver, pawls/springs, male axle, cones, nuts



RAZOR STREET

Top quality low flange front hub with female alu 7075-T6 axle, hollow Cr-Mo bolts and 2 oversized sealed bearings. Alu hubguard and solid Cr-Mo bolts available as separate spare parts. Using solid bolts is recommended for grinding.

- **Hub-shell:** alu 6061-T6
- **Axle:** 15mm female alu 7075-T6 with hard anodized surface
- **Bolts:** hollow Cr-Mo 3/8"x24T, heat-treated (17mm wrench or 8mm Allen key)
- **Optional Bolts:** solid Cr-Mo 3/8"x24T, heat-treated (recommended for use with pegs)
- **Cones:** alu 7075, push-in (both sides)
- **Bearings:** 2 precision sealed bearings
- **Holes:** 36H, 32H
- **Weight:** 179g / 6.31 oz. (hollow bolts)
190g / 6.70 oz. (solid bolts)
- **Available spare parts:** female axle, cones, hollow bolts, solid bolts



9T COGGUARD

Hubguard designed to protect the driver, chain, hub flange and spokes from grind abuse. Universal design make this fit all male hubs with 14mm axle and 9T driver.

- **Diameter:** 75mm
- **Height:** 22mm
- **Weight:** 59g / 2.1oz.



M14 REAR HUBGUARD

Rear hubguard for non-drive side. Universal design make this fit all male hubs with 14mm axle.

- **Diameter:** 70mm
- **Height:** 25mm
- **Weight:** 79g / 2.8oz.



3/8" FRONT HUBGUARD

Universal front hubguard. Designed to replace the hardware on your hub with 3/8x24T axle, protecting the flange from grind damage.

- **Diameter:** 55mm
- **Height:** 12mm
- **Weight:** 36g / 1.25oz.



RAZOR PARK

Ultra light low flange front hub with female alu 7075-T6 axle, Cr-Mo 8mm bolts and 2 sealed bearings. For pegless riding only.

- **Hub-shell:** alu 6061-T6
- **Axle:** 12mm female alu 7075-T6 with hard anodized surface
- **Bolts:** Cr-Mo M8x1.25mm, heat-treated (6mm Allen key)
- **Cones:** alu 7075, push-in (both sides)
- **Bearings:** 2 precision sealed bearings
- **Holes:** 36H, 32H
- **Weight:** 129g / 4.55 oz.
- **Available spare parts:** female axle, cones, hollow bolts, solid bolts

SECTOR FRONT

Sealed front hub with 3/8" male chromoly axle, low flange hub shell and 2 precision sealed bearings.

- **Hub shell:** alu 6061-T6
- **Axle:** Cr-Mo 3/8"x24T, heat-treated
- **Nuts:** alu 7075 for 17mm wrench (optional Cr-Mo nuts available)
- **Cones:** alu 7075
- **Bearings:** 2 precision sealed bearings
- **Holes:** 36H
- **Weight:** 198g / 6.98oz.
- **Available spare parts:** male axle, cones, alu nuts, Cr-Mo nuts



SECTOR FRONT/RAZOR STREET HUBGUARDS

CNC machined hubguards made of alu 7075-T6. Separate versions for Sector Front and Razor Street front hubs.

- **Diameter:** 55mm
- **Height:** 9mm (Sector Front)
10mm (Razor Street)
- **Weight:** 30g / 1.06oz.



DUST/DUST LONG

Heat-treated Cr-Mo 4130 peg with internal machining and slim design for weight decrease. Assembling hardware for 14mm or 3/8" axles included.

- **Diameter:** 34mm
- **Length:** 95mm / 110mm
- **Anti-rotation pin (4 positions)**
- **Weight:** 146g / 5.14oz. (Dust); 159g / 5.61oz. (Dust Long)



FIZZER

Lightweight peg made of 5.8mm thick plastic with alu 6061 backplate. Designed for park use to grind on smooth surfaces. Assembling hardware for 14mm or 3/8" axles included.

- **Diameter:** 38mm
- **Length:** 104mm
- **Anti-rotation pin (6 positions)**
- **Weight:** 82g / 2.89oz.



FATTY COMBO

Extra thick foam padded seat with 1-pc covering, nylon base and alu 6061-T6 post.

- **Seat post:** 25.4x160mm
- **Seat length:** 230mm
- **Seat width:** 143mm
- **Weight:** 356g / 12.55oz.



TEES

100% cotton t-shirts with DartBMX logos.

- **Sizes:** S, M, L, XL



COUCH

Extra thick foam padded Pivotal seat with Cordura abrasion proof covering and nylon base. Hollow Pivotal bolt for decreased weight. Stitched DartBMX logo.

- **Seat length:** 234mm
- **Seat width:** 142mm
- **Weight:** 369g / 13.01oz.



IVY

Thick foam padded Pivotal seat with 1-pc covering and nylon base. Hollow Pivotal bolt for decreased weight.

- **Seat length:** 232mm
- **Seat width:** 134mm
- **Weight:** 292g / 10.29oz.



PRESSURE

Slim design knee guards with strong PE knee cup.

- Kevlar fabric material over knee cup
- Super ventilated mesh
- Lateral Eva foam padding
- Top and bottom Velcro straps around the whole leg
- **Sizes:** S, M, L



ESSENCE

Shin guards with 3 sets of flexible PE inserts for protection and better comfort.

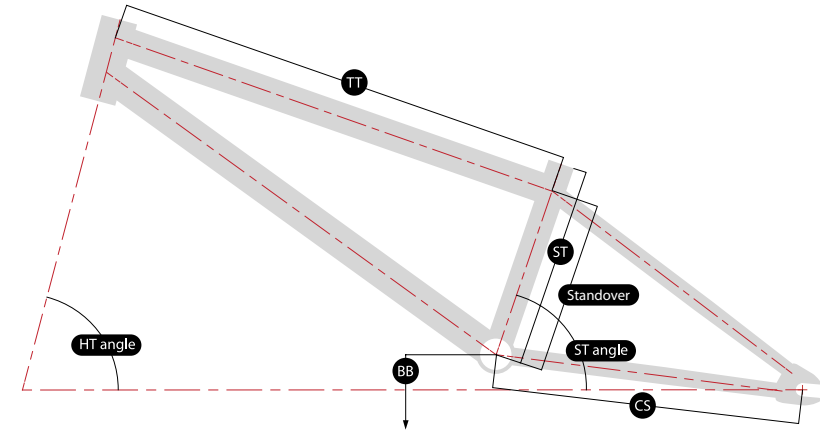
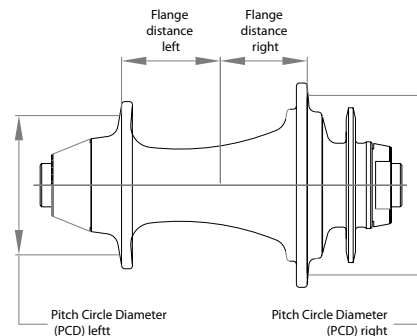
- Strong Neoprene material
- Good sweat absorption
- 3 wide Velcro straps for better fitting
- **Sizes:** M, L

COMPLETE BIKES SPECIFICATION

MODEL	RIKKU	MANA	OZZY 20.6"	OZZY 19.5"
Frame	100% Cr-Mo 4130 TT 20.6" / CS 13.5"	TT/DT Cr-Mo 4130 TT 20.25" / CS 13.2"	DT Cr-Mo 4130 TT 20.6" / CS 13.5"	DT Cr-Mo 4130 TT 19.5" / CS 13"
Fork	100% Cr-Mo 4130 offset 33mm	Cr-Mo 4130 steerer tube offset 33mm	Cr-Mo 4130 steerer tube offset 33mm	Cr-Mo 4130 steerer tube offset 33mm
Bars	100% Cr-Mo 4130 28" / 8.25"	100% Cr-Mo 4130 28" / 8.25"	100% Cr-Mo 4130 28" / 8.25"	100% Cr-Mo 4130 28" / 8.25"
Grips	Block	Shamann	Block	Block
Stem	alu front load reach 50mm	alu front load reach 50mm	alu front load reach 50mm	alu front load reach 50mm
Headset	integrated sealed bearings	integrated sealed bearings	integrated sealed bearings	integrated sealed bearings
Cranks	3-pcs tubular heat-treated Cr-Mo 4130	3-pcs tubular heat-treated Cr-Mo 4130	3-pcs tubular heat-treated Cr-Mo 4130	3-pcs tubular heat-treated Cr-Mo 4130
Pedals	Cookie	Cookie	Cookie	Cookie
BB	Spanish 19mm sealed bearings	Spanish 19mm sealed bearings	Spanish 19mm sealed bearings	Spanish 19mm sealed bearings
Sprocket	Peacock 25T alu 6061	Cr-Mo 25T	Cr-Mo 25T	Cr-Mo 25T
Chain	Core	Core	Core	Core
Front hub	3/8" male axle, 36H sealed bearings	3/8" male axle, 36H loose ball bearings	3/8" male axle, 36H loose ball bearings	3/8" male axle, 36H loose ball bearings
Rear hub	Sector OEM, 36H sealed bearings 9T driver RHD	Sector OEM, 36H sealed bearings 9T driver RHD	Sector OEM, 36H sealed bearings 9T driver RHD	Sector OEM, 36H sealed bearings 9T driver RHD
Spokes	black, steel brass nipples	black, steel brass nipples	silver, steel brass nipples	silver, steel brass nipples
Rims	Shining 36H double wall	Shining 36H double wall	Shining 36H double wall	Shining 36H double wall
Front tire	Maxxis Gritter 2.1"	Innova 2.0"	Innova 2.0"	Innova 2.0"
Rear tire	Maxxis Gritter 1.85"	Innova 2.0"	Innova 2.0"	Innova 2.0"
Seat	Sticky Combo	Sticky Combo	Sticky Combo	Sticky Combo
Brake/lever	Rikku OEM	Mana OEM	Ozzy OEM	Ozzy OEM
Pegs	1 pair, steel 38x110mm	-	-	-
Weight	10.5kg / 23.14lbs w/o pegs	10.9kg / 24.02lbs	11.1kg / 24.46lbs	11.1kg / 24.46lbs

HUBS DIMENSIONS

	Wheel	PCD left (mm)	PCD right (mm)	Flange distance left (mm)	Flange distance right (mm)
Razor V.2 / Razor V.1	Rear	45	58	27	26
Riot	Rear	45	58	31	30
Sector V.2 / Sector V.1	Rear	45	58	29	29
B-One	Rear	45	45	28.5	28.5
Razor Street	Front	38	38	36.5	36.5
Razor Park	Front	34	34	39.5	39.5
Sector Front	Front	34	34	39.5	39.5
B-Two	Front	38	38	31.2	31.5



FRAMES GEOMETRY

MODEL	Thug 20.9"	Thug 20.7"	Nami v.3 21"	Nami v.3 20.75"	Nami v.3 20.5"	Yuki v.2	Rikku	Mana	Ozzy 20.6"	Ozzy 19.5"
Top tube length	20.9"	20.7"	21"	20.75"	20.5"	20.8"	20.6"	20.25"	20.6"	19.5"
Chain stay length	13.5" - 13.65"	13.5" - 13.65"	13.5"	13.25"	13"	13.5"	13.5"	13.2"	13.5"	13"
Head tube angle	75.5°	75.5°	75°	75°	75°	75°	75°	75°	75°	75°
Seat tube angle	70°	70°	71°	71°	71°	71°	71°	71°	71°	71°
BB height	11.5"	11.5"	11.5"	11.5"	11.5"	11.5"	11.5"	11.5"	11.5"	11.5"
Standover	8.8"	8.8"	8.5"	8.5"	8.5"	6.8"	-	-	-	-
Seat tube height	10"	10"	9.7"	9.7"	9.7"	7.7"	8.25"	8.5"	8.5"	8.5"

RECOMMENDED SPOKES LENGTH

Hub model	Rim model	Holes	Inter-sections	Spokes length left side (mm)	Spokes length right side (mm)	Rim ERD (mm)	Rim OSB (mm)
BMX REAR HUBS							
Riot	Torch 20"	36	3	186	184	390	7
	Fortress/Raider 20"	36	3	182	180	384	1.5
Razor v.2 / Razor v.1	Torch 20"	36	3	184	184	390	7
	Fortress/Raider 20"	36	3	182	180	384	1.5
Sector v.2 / Sector v.1	Torch 20"	36	3	184	184	390	7
	Fortress/Raider 20"	36	3	182	180	384	1.5
B-One	Torch 20"	36	3	184	186	390	7
	Fortress/Raider 20"	36	3	182	182	384	1.5
BMX FRONT HUBS							
Razor Street	Torch 20"	36	3	190	188	390	7
	Fortress/Raider 20"	32	3	188	188	384	1.5
	Fortress/Raider 20"	36	3	186	186	384	1.5
Razor Park	Torch 20"	36	3	192	188	390	7
	Fortress/Raider 20"	32	3	188	188	384	1.5
	Fortress/Raider 20"	36	3	186	186	384	1.5
Sector Front	Torch 20"	36	3	192	188	390	7
	Fortress/Raider 20"	36	3	186	186	384	1.5
B-Two	Torch 20"	36	3	188	186	390	7
	Fortress/Raider 20"	32	3	186	186	384	1.5
	Fortress/Raider 20"	36	3	184	184	384	1.5

MAXIMUM TIGHTENING TORQUE

FRAMES	Gyro tabs	4 Nm
	Integrated seat post clamp	6 Nm
FORK	Cap	10 Nm
CRANKS	Thorn/Flare assembly tool	50 Nm
	Thorn/Flare crank bolts	15 Nm
	Keipo/Chukka Two crank bolts	10 Nm
	Keipo/Chukka Two tightening bolts M6x18	12 Nm
BBS	Sprocket bolts	20 Nm
	Euro BB cups	40 Nm
HUBS	Riot/Sector/Sector Front tightening nuts	20 Nm
	Razor/Razor Street 3/8" female bolts	25 Nm
	Razor Park M8 female bolts	18 Nm
STEMS	Reign/Reflect frontplate bolts	12 Nm
	Reign/Reflect steerer bolts	10 Nm
PEDALS	Assembling in cranks	35 Nm
	Pins	5 Nm
HEADSETS	Top cap	8 Nm
SEATS	Pivotal bolt	18 Nm



DARTBMX.COM



facebook.com/dartbmx