



DARTMOOR
DARTBMX2013



DARTBMX DartBMX is a new BMX brand from Dartmoor-Bikes, totally BMX and with input directly from our Polish and international BMX crew. Our inspiration comes directly from the riders, who are very important to us. We proudly support young and talented riders all over the World. Our aim is to bring you the best products - by riders for the riders.

DAWID GODZIEK

Date of birth. 10.08.1994

Where are you from?

Suszec, Poland.

Why did you start riding BMX?

I started to ride of BMX because of the indoor skatepark in Wroclaw that is accessible only for BMX bikes.

What is your best trick.

My personal best trick is frontflip barspin.

What do you like to do when you are not riding?

Apart from BMX I'm riding a bit on a skateboard and I'm spending free time with my girlfriend.

What makes you to progress with your riding?

I'm getting pushed for riding with some movies full of bangers!

What type of music do you like to listen when you are riding?

While riding I'm being accompanied with every type of music as long as it really kicks me!

The best place you have been to until now?

The best place I've ever been to is Frejus in France. I was there for Lords of Dirt contest.

How long have you been riding?

In total it would be seven years.

Describe your perfect day.

Ideal day - wake up at 9 am. Chilling out until 4 pm at the lake side. Then riding my backyard until late evening and having some BBQ with my friends.

Can you lace a wheel?

I know how to lace a wheel, but last time I switched rims and reversed them... I lace the wheels and my grandpa middles them.

What is the best part of your bike?

Of course my frame is the best part of my bike.

Who is your inspiration?

I'm not being inspired by one rider. I like a bit of style from many different riders.

What advice would you give for youngsters to keep riding? / What keeps you riding?

Ride as much as you can!





RIKKU

Rikku is a straight out of the box all round high quality complete bike, which definitely meets requirements of the advanced riders. It features a 100% chromoly frame with integrated head tube, chromoly fork and handlebar, sealed hubs and ultra light Maxxis Grifter tires.

SPECIFICATION:

- **Frame:** Rikku, 100% Cr-Mo 4130, TT 20.6", CS 13.5", integrated seat clamp, 5mm thick heat-treated dropouts
- **Fork:** Rikku, 100% Cr-Mo 4130, 5mm thick dropouts, tapered legs, offset: 33mm
- **Handlebar:** custom design, 100% Cr-Mo 4130, rise: 8.25", width: 28", backsweep: 11°, upsweep: 3°
- **Grips:** Shamann, length: 150mm
- **Stem:** alu front load, reach: 50mm
- **Headset:** integrated, sealed bearings
- **Cranks:** 175mm, heat-treated, 3-pc tubular chromoly, 8 splines, axle diameter: 19mm
- **Pedals:** Cookie PC
- **BB:** Spanish 19mm, press fit, sealed bearings
- **Sprocket:** Zulu 25T, alu 7075, CNC, 5mm thick
- **Chain:** Core 1/8"
- **Front hub:** 3/8" male axle, sealed bearings, 36H
- **Rear hub:** Sector OEM Cassette, 14mm male axle, sealed bearings, RHD 9T driver, 36H
- **Spokes:** steel with brass nipples, black
- **Rims:** double wall, 36H
- **Front tire:** Maxxis Grifter 2.1"
- **Rear tire:** Maxxis Grifter 1.85"
- **Seat:** Sticky Combo
- **Brake/lever:** Rikku (OEM brake)
- **Pegs:** steel (1 pair), 38x110mm
- **Weight:** 10.5kg / 23.14lbs. (w/o pegs)



MANA

Mana is a new mid-level bike in our collection. Geometry of the bike is designed for the young people who want to have a smooth start in the world of BMX. The bike features an integrated head tube, integrated seat clamp, fork with chromoly steerer, 8.25" chromoly bars, sealed cassette rear hub and heat treated chromoly cranks with sealed BB.

SPECIFICATION:

- **Frame:** Mana, TT/DT Cr-Mo 4130, TT 20.25", CS 13.2", integrated seat clamp, 5mm thick heat-treated dropouts
- **Fork:** Mana, chromoly steerer tube, 5mm thick dropouts, tapered legs, offset: 33mm
- **Handlebar:** custom design, 100% Cr-Mo 4130, rise: 8.25", width: 28", backsweep: 11°, upsweep: 3°
- **Grips:** Shamann, length: 150mm
- **Stem:** alu front load, reach: 50mm
- **Headset:** integrated, sealed bearings
- **Cranks:** 175mm, heat-treated, 3-pc tubular chromoly, 8 splines, axle diameter: 19mm
- **Pedals:** Cookie PC
- **BB:** Spanish 19mm, press fit, sealed bearings
- **Sprocket:** 25T, steel
- **Chain:** Core 1/8"
- **Front hub:** 3/8" axle, loose ball bearings, 36H
- **Rear hub:** Sector OEM Cassette, 14mm male axle, sealed bearings, RHD 9T driver, 36H
- **Spokes:** steel with brass nipples, black
- **Rims:** double wall, 36H
- **Front tire:** Innova 2.0"
- **Rear tire:** Innova 2.0"
- **Seat:** Sticky Combo
- **Brake/lever:** Mana (OEM brake)
- **Weight:** 10.9kg / 24.02lbs.





OZZY

Ozzy was designed to meet requirements of the youngest BMX riders. Small geometry of the frame will be perfect for them. But Ozzy still has some hi-end features like integrated head tube, integrated seat clamp, fork with chromoly steerer, 8.25" chromoly bars, sealed cassette rear hub and heat treated chromoly cranks with sealed BB.

SPECIFICATION:

- **Frame:** Ozzy, DT Cr-Mo 4130, TT 19.5", CS 13", integrated seat clamp, 5mm thick heat-treated dropouts
- **Fork:** Ozzy, Cr-Mo 4130 steerer tube, 5mm thick dropouts, offset: 33mm
- **Handlebar:** custom design, 100% Cr-Mo 4130, rise: 8.25", width: 28", backsweep: 11°, upsweep: 3°
- **Grips:** Shamann, length: 150mm
- **Stem:** alu front load, reach: 50mm
- **Headset:** integrated, sealed bearings
- **Cranks:** 175mm, heat-treated, 3-pc tubular chromoly, 8 splines, axle diameter: 19mm
- **Pedals:** Cookie PC
- **BB:** Spanish 19mm, press fit, sealed bearings
- **Sprocket:** 25T, steel
- **Chain:** Core 1/8"
- **Front hub:** 3/8" axle, loose ball bearings, 36H
- **Rear hub:** Sector OEM Cassette, 14mm male axle, sealed bearings, RHD 9T driver, 36H
- **Spokes:** steel with brass nipples, silver
- **Rims:** double wall, 36H
- **Front tire:** Innova 2.0"
- **Rear tire:** Innova 2.0"
- **Seat:** Sticky Combo
- **Brake/lever:** Ozzy (OEM brake)
- **Weight:** 11.1kg / 24.46lbs



ALIN MOLDOVAN

Date of birth. 22.01.1986,
which means I'm almost as old as the hills.

Where are you from?
I'm from Romania. It's a country on the map, but nobody knows where it is.

Why did you start riding BMX?
I started to ride on BMX because I wanted to jump over things.

What is your best trick?
My best trick is to get drunk and do flips on my snowboard while being pulled by a car.

What do you like to do when you are not riding?
I like to do nothing so much that I have to practice it every day for at least one hour.

What makes you to progress with your riding?
I think the imaginary foam pit from the bike park in Baia Mare city.

What type of music do you like to listen when you are riding?
Snoop Lion and 2Pac

The best place you have been to until now?
For me the best place is everywhere as long as I have my bike with me.

How long have you been riding?
I've been riding since 2004

Describe your perfect day.
Never had one! Still waiting for it to come.

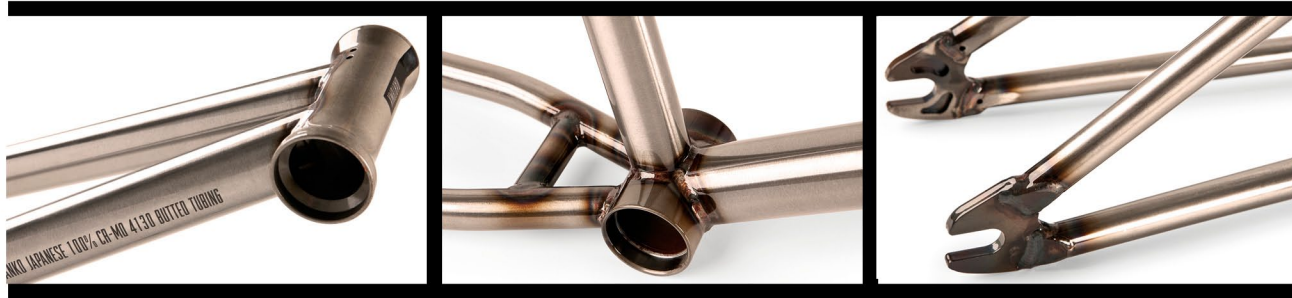
Can you lace a wheel?
I can't lace a goddamn wheel. At this age it's very bad!

What is the best part of your bike?
I like all my cr-mo parts and my future frame, which I'm about to get soon.

Who is your inspiration?
Garrett Reynolds - he's the man! Being able to maintain his level of riding for such a long time is really crazy and incredible at the same time!!

What advice would you give for youngsters to keep riding? / What keeps you riding?
To have fun and learn how to lace a wheel! What keeps me riding? This incredible feeling that BMX offers you!



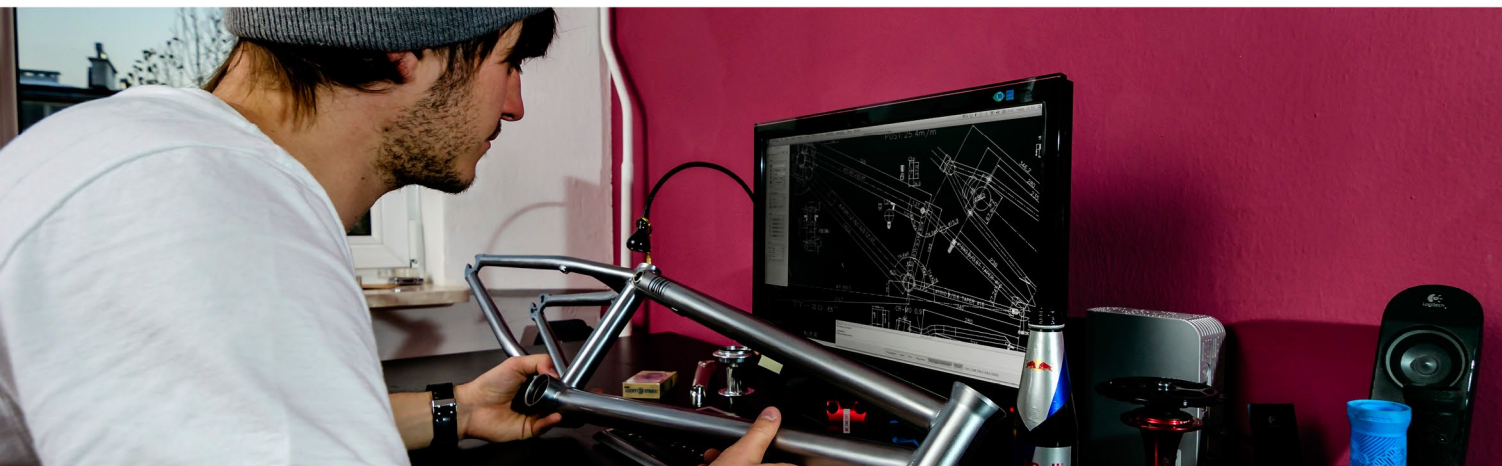


NAMI V.3

New Dawid Godziek's signature frame is made now of famous Sanko 100% Cr-Mo 4130 multi butted tubes with short, CNC machined dropouts with built-in chain tensioners, removable pivots, cable hanger and gyro tabs. Nami v.3 frame will be available in 3 sizes to better fit riders' needs.

- **Material:** Sanko Cr-Mo 4130, butted TT, DT and ST
- **Heat-treatment:** dropouts, BB and HT
- **TT length:** 20.5", 20.75", 21"
- **CS length:** 13" (20.5"), 13.25" (20.75"), 13.5" (21")
- **HT angle:** 75°
- **ST angle:** 71°
- **BB height:** 11.5"
- **ST height:** 8.5"
- **Headset type:** integrated (45/45 Campy spec.)
- **Gusset:** DT integrated
- **BB:** Spanish 68mm
- **Seat clamp:** integrated
- **Dropouts:** 6mm thick, 14mm size
- **Weight:** 2.18kg / 4.81lbs. (21")





YUKI V.2

Low profile, lightweight park frame made of Sanko 100% Cr-Mo 4130 multi butted tubes. Heavy duty tested by Viktor's Kronbergs and Łukasz Wysokiński. Yuki comes now with short CNC machined dropouts with built-in chain tensioners, removable pivots, cable hanger and gyro tabs.

- **Material:** Sanko Cr-Mo 4130, butted TT, DT and ST
- **Heat-treatment:** dropouts, BB and HT
- **TT length:** 20.8
- **CS length:** 13.5"
- **HT angle:** 75°
- **ST angle:** 71°
- **BB height:** 11.5"
- **ST height:** 6.8"
- **Headset type:** integrated (45/45 Campy spec.)
- **Gusset:** DT integrated
- **BB:** Spanish 68mm
- **Seat clamp:** integrated (Strawberry)
- **Dropouts:** 6mm thick, 14mm size
- **Weight:** 2.10kg / 4.63lbs.



SAITO V.2

Lightweight fork made of triple butted 100% Cr-Mo 4130 steel. Post-weld heat-treated. Molded bottom section of the legs. Steerer tube and legs machined inside for weight reduction. 1-pc CNC machined steerer tube



- **Heat-treatment:** post-weld
- **Height:** 316mm
- **Steerer tube length:** 165mm
- **Offset:** 32mm
- **Bearing race:** integrated (45/45 Campy)
- **Dropouts:** 5mm thick, laser-cut
- **Top cap:** alu 7075-T6, M25x1.5mm (6mm Allen key)
- **Weight:** 870g / 30.68oz.

PAWEŁ WICHOWSKI

Date of birth. 13.02.1993

Where are you from?

Ursynow, Warsaw, Poland.

Why did you start riding BMX?

Thanks to Extreme Sports Channel.

What is your best trick.

It's a combo - dogde from getting hit by a thug straight to barspin.

What do you like to do when you are not riding?

Some ordinary stuff. I drink, eat, sleep and sometimes watch TV.

What makes you to progress with your riding?

New videos, visiting new places, progression of my mates.

What type of music do you like to listen when you are riding?

I only listen to sounds of the streets!

The best place you have been to until now?

Berlin.

How long have you been riding?

Couple of years.

Describe your perfect day.

To wake up necessarily at my own place not too early, but not too late. Eat a huge portion of crumbled eggs with some bacon. Then ride my bike until late and finish it with a cold beer and nice music.

Can you lace a wheel?

Yes, but with some difficulties.

What is the best part of your bike?

My pegs of course!

Who is your inspiration?

Cinek, Gejas, FLED, North East style

What advice would you give for youngsters to keep riding? / What keeps you riding?

I just like what I do and it keeps me riding.



FLOW 9

Extra wide 2-pc bars made of 13-buttet 100% Cr-Mo 4130 steel tubes. Post-weld heat-treated.

- **Material:** 100% Cr-Mo 4130, 13-buttet
- **Heat-treatment:** post weld
- **Rise:** 9"
- **Width:** 30"
- **Upsweep:** 3°
- **Backsweep:** 12°
- **Crossbar height:** 6.55"
- **Crossbar diameter:** 3/4"
- **Weight:** 770g / 27.16oz.



FLOW 8.5

New, medium size 2-pc bars made of 13-buttet 100% Cr-Mo 4130 steel tubes. Post-weld heat-treated.

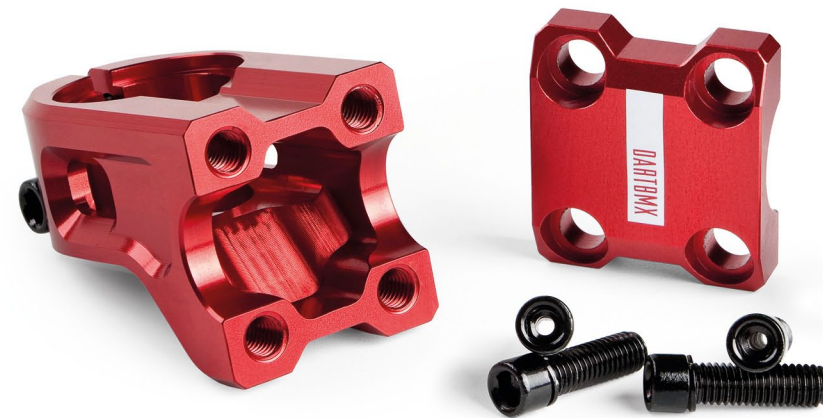
- **Material:** 100% Cr-Mo 4130, 13-buttet
- **Heat-treatment:** post weld
- **Rise:** 8.5"
- **Width:** 28.5"
- **Upsweep:** 3°
- **Backsweep:** 12°
- **Crossbar height:** 6.25"
- **Crossbar diameter:** 3/4"
- **Weight:** 730g / 25.75oz.



REIGN

Brand new, front load stem made of cold forged/CNC machined alu 7075-T6 with special internal and external machining and hollow clamp/pinch bolts to save weight. Classic style and chamfered edges for a clean look.

- **Reach:** 50mm
- **Stack height:** 30mm
- **Rise:** 9mm
- **Clamp/pinch bolts:** hollow M8x1.25mm (x6)
- **Weight:** 235g / 8.29oz.



REFLECT V.2

Ultra light front load stem with extensive internal machining and hollow clamp/pinch bolts. Made of cold forged/CNC machined alu 7075-T6. Now redesigned for better look.

- **Reach:** 50mm
- **Stack height:** 30mm
- **Rise:** 9mm
- **Clamp/pinch bolts:** hollow M8x1.25mm (x6)
- **Weight:** 218g / 7.69oz.



PAWEŁ PIOTROWSKI

Date of birth. 25.06.1995

Where are you from?
Leszno, Poland

Why did you start riding BMX?
When I was a little kid I used to watch other guys riding on a concrete park near to my house. I got myself into BMX and started to bother my parents everyday to buy me a bike.

What is your best trick.
Well, I'm particularly satisfied with truckdriver, but lately I managed to pull a double kickflip on a skateboard and it was fun!

What do you like to do when you are not riding?
Everything and nothing.

What makes you to progress with your riding?
Videos from the riders I like makes me eager to pull new tricks.

What type of music do you like to listen when you are riding?
I listen to music, which I've already heard in BMX movies. Rock tunes are my favourite ones.

The best place you have been to until now?
Cote d'Azur in France

How long have you been riding?
I've been riding since January 2008.

Describe your perfect day.
For me the perfect day is when everything goes exactly as I planned.

Can you lace a wheel?
I can only lace half of a wheel and then usually I lose my patience. All the babbling about not letting the foreman from the bike shop to earn some money goes to hell.

What is the best part of your bike?
Pegs are the best part of my bike. I use them very often and they give me a lot of different possibilities.

Who is your inspiration?
Garrett Reynolds, Ty Morrow, Chase Dehart, Dan Lacey, Nathan Williams

What advice would you give for youngsters to keep riding? / What keeps you riding?
Take it easy with stupid cackle from better riders. Create your own style and don't stop riding. It's a beautiful passion.

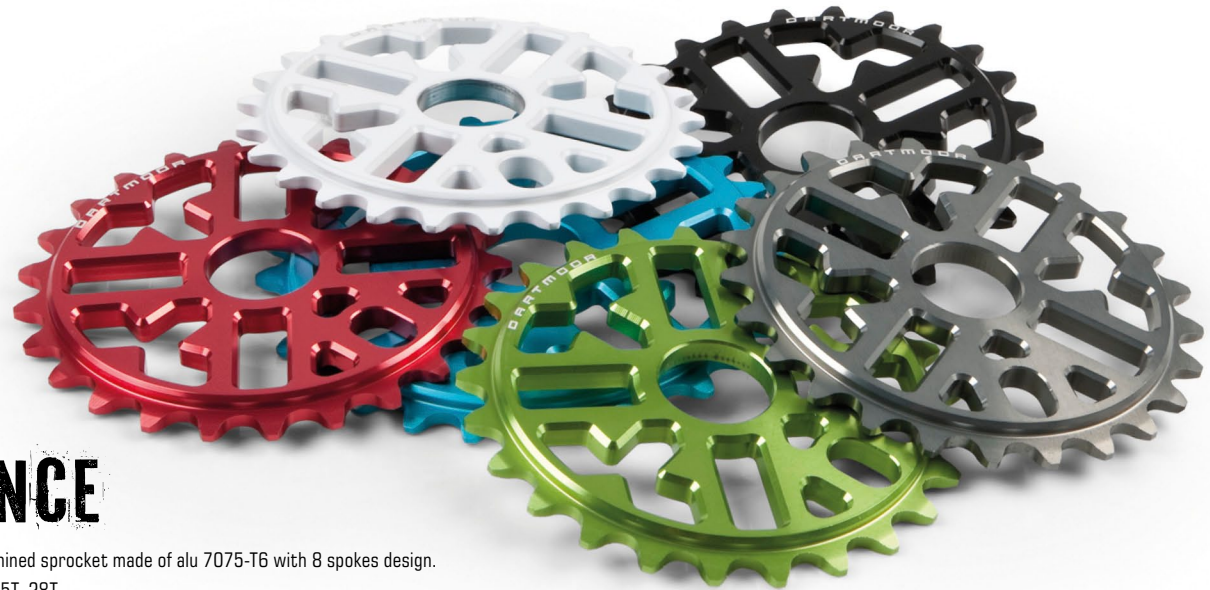




THORN BMX

2-pcs design cranks made of heat-treated 100% Cr-Mo 4130 steel. Shorter spindle perfectly fits BMX frames. Two sprocket holes to fit all sprocket sizes. Small gusset to make the pedals assembly area stronger. Includes arms, spindle (welded to the right arm), spindle bolts (x2), sprocket bolts (x2), assembly/disassembly tool.

- **Arms length:** 170 mm
- **Spindle:** 22mm hollow, 150mm long
- **Spindle splines:** 48
- **Spindle bolt:** 5/8"x24T (8mm Allen key)
- **Two spindle bolts included:** alu 7075-T6 x1; Cr-Mo x1
- **RHD/LHD compatible**
- **Hollow bigger sprocket bolt**
- **Weight:** 745g / 26.28oz. (with alu spindle bolt)
763g / 26.91oz. (with Cr-Mo spindle bolt)



TRANCE

Fully CNC machined sprocket made of alu 7075-T6 with 8 spokes design.

- **Size:** 23T, 25T, 28T
- **Teeth:** 1/8"
- **Bore:** 15/16"
- **Thickness:** 6mm
- **Adapter:** 19mm and 22mm included
- **Weight:** 56g / 1.97oz. (23T)
65g / 2.29oz. (25T)
90g / 3.14oz. (28T)



FLARE

2.5-pcs design cranks made of heat-treated 100% Cr-Mo 4130 steel. Two sprocket holes to fit all sprocket sizes. Small gusset to make the pedals assembly area stronger. Includes arms, spindle (pressed into the right arm), spindle bolt (x1), sprocket bolts (x2), assembly tool.

- **Arms length:** 170 mm
- **Spindle:** 19mm hollow
- **Spindle splines:** 48
- **Spindle bolt:** Cr-Mo M12x1mm (6mm Allen key)
- **RHD/LHD compatible**
- **Hollow bigger sprocket bolt**
- **Weight:** 814g / 28.71oz.



KEIPO

3-pcs design cranks made of heat-treated 100% Cr-Mo 4130 steel. Two sprocket holes to fit all sprocket sizes. Small gusset to make the pedals assembly area stronger. Includes arms, spindle, Cr-Mo spindle bolts (x2), sprocket bolts (x2), pinch bolts (x2). Alu spindle bolts available as separate spare parts.

- **Arms length:** 175 mm
- **Spindle:** 19mm hollow
- **Spindle splines:** 16
- **Spindle bolts:** Cr-Mo M12x1mm (6mm Allen key)
- **Pinch bolts:** M6x1mm
- **RHD/LHD compatible**
- **Hollow bigger sprocket bolt**
- **Weight:** 835g / 29.45oz.



PRIME

45/45 Campy style headsets with low profile alu 2014 upper cover. High quality precision sealed bearings with anti-rust titanium coating. Custom compression cap included.

- **Stack height:** 5.7mm
- **Bearings size:** 41.8x30.5x8mm
- **Weight:** 61g / 2.15oz. (w/o compression cap)



CORE

Strong chain with drilled top side plates. Masterlink included. Painted color options.

- **Width:** 1/8"
- **Length:** 102 links
- **Weight:** 276g / 9.73oz. (for 72 links)



FORTRESS

Double wall, three chambers rim made of alu 6061-T6. Perfect for rear or front wheel applications. U-Brake compatible.

- **Width:** 32.4mm
- **Height:** 21mm
- **ERD:** 380.5mm
- **Holes:** 36H, 32H (black only)
- **Seam:** Pinned
- **Weight:** 485g / 17.10oz.



RAIDER

Double wall, three chambers lightweight rim made of alu 6061-T6. Intended for front or rear wheel brakeless applications.

- **Width:** 31.4mm
- **Height:** 21mm
- **ERD:** 380.6mm
- **Holes:** 36H, 32H (black only)
- **Seam:** Pinned
- **Weight:** 405g / 14.28oz.

COOKIE

Lightweight pedals made of nylon. Knurled surface and 12 molded pins per side for maximum traction.

- **Platform size:** 90x95mm
- **Height:** 23mm
- **Spindle:** Cr-Mo 4130 (15mm wrench or 6mm Allen key)
- **Bearings:** unsealed
- **Weight:** 315g / 11.11oz.



SHAMANN

High flanges grips made of special rubber compound with increased durability comparing to Kraton for the same softness.

- **Length:** 150mm
- **Diameter:** 30mm
- **Bar Ends:** plastic screw type
- **Weight:** 154g / 5.43oz.



DUST

Heat-treated Cr-Mo 4130 peg with internal machining and slim design for weight decrease. Assembling hardware for 14mm or 3/8" axles included.

- **Diameter:** 34mm
- **Length:** 95mm
- **Anti-rotation pin (4 positions)**
- **Weight:** 146g / 5.14oz.



FIZZ ER

Lightweight peg made of 5.8mm thick plastic with alu 6061 backplate. Designed for park use to grind on smooth surfaces. Assembling hardware for 14mm or 3/8" axles included.

- **Diameter:** 38mm
- **Length:** 104mm
- **Anti-rotation pin (6 positions)**
- **Weight:** 82g / 2.89oz.

ŁUKASZ WYSOKIŃSKI

Date of birth: 10.12.1992 exact time: 7:34 AM

Where are you from?

From Warsaw

Why did you start riding BMX?

I got inspired by some people from my hood, who used to do a lot of wheelies.

What is your best trick?

Wheelie!

What do you like to do when you are not riding?

I wash, clean and polish my beloved and dear VW Golf MK3.

What makes you to progress with your riding?

Smooth running bike, good mood and energy drinks.

What type of music do you like to listen when you are riding?

Some harsh howling with a lot of bass! Hardcore, metalcore and all those evil guys with tattoos and piercings all over their faces.

The best place you have been to until now?

In fact, I haven't had many opportunities to visit new places, but Kolobrzeg has to offer few good street spots. I really recommend it.

How long have you been riding?

Six years have already passed.

Describe your perfect day.

Eat breakfast with my girlfriend. Quick ride to a skatepark with my Golf. Whole day on my bike and a good party in the end.

Can you lace a wheel?

Unfortunately not, I'm not that good.

What is the best part of your bike?

Yuki frame. It's low, light, perfect length - for me it's sweet!

Who is your inspiration?

Mike Aitken, Kriss Kyle.

What advice would you give for youngsters to keep riding? / What keeps you riding?

Eat a lot of meat, so that you have power for riding. Try to pull new tricks as many times as possible, eventually you will nail it.





RAZOR V.2

Top quality lightweight rear cassette hub with 9T driver and 6 big pawls located in the body (Q-Lite system). With female Cr-Mo axle and hollow Cr-Mo bolts included. Razor v.2 will have threaded cone from the driving side side to better protect bearings inside the driver when tightening the bolts and changed distance between bearings in hub shell.

- **Hub-shell:** alu 6061-T6
- **Axle:** female Cr-Mo 4130, heat-treated (accepts 8mm hex head)
- **Bolts:** hollow Cr-Mo 3/8"x24T, heat-treated (17mm wrench or 8mm Allen key)
- **Optional Bolts:** solid Cr-Mo 3/8"x24T, heat-treated (recommended for use with pegs)
- **Cones:** alu 7075 (threaded from the driving side)
- **Bearings:** 5 precision sealed bearings (x3 in driver, x2 in hub shell)
- **Driver:** Cr-Mo 1-pc, 9T
- **Pawls:** 6 pawls design with 6 individual, double springs (Q-lite)
- **Engagement points:** 30
- **Holes:** 36H
- **Weight:** 423g / 14.92oz. (Cr-Mo axle)
351g / 12.38oz. (alu axle)



RAZOR/RAZOR V.2 HUBGUARDS

CNC machined hubguards made of alu 7075-T6 to protect non-drive side flange. Separate versions for Razor and Razor v.2 rear hubs.

- **Diameter:** 68mm
- **Height:** 21mm
- **Weight:** 49g / 1.73oz.



SECTOR V.2

High quality rear cassette hub with 9T driver, 6 pawls and 5 sealed bearings. Sector v.2 is available in two separate versions - with just right hand drive (RHD) or just left hand drive (LHD) and with upgraded springs construction in the driver. It comes with 14mm hollow Cr-Mo axle.

- **Hub-shell:** alu 6061-T6
- **Axle:** 14mm Cr-Mo 4130, heat-treated (accepts 8mm hex head)
- **Nuts:** Cr-Mo for 17mm wrench
- **Cones:** alu 7075
- **Bearings:** 5 precision sealed bearings (x3 in driver, x2 in hub shell)
- **Driver:** Cr-Mo 1-pc, 9T
- **Pawls:** 6 pawls design with 6 individual springs
- **Driving direction:** only RHD or only LHD
- **Engagement points:** 48
- **Holes:** 36H
- **Weight:** 478g / 16.86oz. (with Cr-Mo nuts)



SECTOR/SECTOR V.2 HUBGUARD

CNC machined hubguard made of alu 7075-T6 to protect non-drive side flange. One version for both: Sector and Sector v.2 rear hubs.

- **Diameter:** 68mm
- **Height:** 21mm
- **Weight:** 46g / 1.62oz.



RAZOR STREET

Top quality low flange front hub with female alu 7075-T6 axle, hollow Cr-Mo bolts and 2 oversized sealed bearings. Alu hubguard and solid Cr-Mo bolts available as separate spare parts. Using solid bolts is recommended for grinding.

- **Hub-shell:** alu 6061-T6
- **Axle:** 15mm female alu 7075-T6 with hard anodized surface
- **Bolts:** hollow Cr-Mo 3/8"x24T, heat-treated (17mm wrench or 8mm Allen key)
- **Optional Bolts:** solid Cr-Mo 3/8"x24T, heat-treated (recommended for use with pegs)
- **Cones:** alu 7075, push-in (both sides)
- **Bearings:** 2 precision sealed bearings
- **Holes:** 36H, 32H
- **Weight:** 179g / 6.31 oz. (hollow bolts)
190g / 6.70 oz. (solid bolts)



SECTOR FRONT/RAZOR STREET HUBGUARDS

CNC machined hubguards made of alu 7075-T6. Separate versions for Sector Front and Razor Street front hubs.

- **Diameter:** 55mm
- **Height:** 9mm (Sector Front)
10mm (Razor Street)
- **Weight:** 30g / 1.06oz.



RAZOR PARK

Ultra light low flange front hub with female alu 7075-T6 axle, Cr-Mo 8mm bolts and 2 sealed bearings. For pegless riding only.

- **Hub-shell:** alu 6061-T6
- **Axle:** 12mm female alu 7075-T6 with hard anodized surface
- **Bolts:** Cr-Mo M8x1.25mm, heat-treated (6mm Allen key)
- **Cones:** alu 7075, push-in (both sides)
- **Bearings:** 2 precision sealed bearings
- **Holes:** 36H, 32H
- **Weight:** 129g / 4.55 oz.

SECTOR FRONT

New sealed front hub with 3/8" chromoly axle, low flange hub shell and 2 precision sealed bearings.

- **Hub shell:** alu 6061-T6
- **Axle:** Cr-Mo 3/8"x24T, heat-treated
- **Nuts:** alu 7075 for 17mm wrench (optional Cr-Mo nuts available)
- **Cones:** alu 7075
- **Bearings:** 2 precision sealed bearings
- **Holes:** 36H
- **Weight:** 198g / 6.98oz.



FATTY COMBO

Extra thick foam padded seat with 1-pc covering, nylon base and alu 6061-T6 post. Embossed logo.

- **Seat post:** 25.4x160mm
- **Seat length:** 230mm
- **Seat width:** 143mm
- **Weight:** 356g / 12.55oz.



STICKY COMBO

Slim padded seat with 1-pc covering, nylon base and alu 6061-T6 post. Embossed logo.

- **Seat post:** 25.4x160mm
- **Seat length:** 222mm
- **Seat width:** 120mm
- **Weight:** 249g / 8.76oz.



TEES

100% cotton t-shirts with DartBMX logos.

- **Sizes:** S, M, L, XL



FATTY

Extra thick foam padded Pivotal seat with 1-pc covering and nylon base. Hollow Pivotal bolt for decreased weight. Embossed logo.

- **Seat length:** 234mm
- **Seat width:** 142mm
- **Weight:** 329g / 11.60oz.



IVY

Thick foam padded Pivotal seat with 1-pc covering and nylon base. Hollow Pivotal bolt for decreased weight. Embossed logo.

- **Seat length:** 232mm
- **Seat width:** 134mm
- **Weight:** 292g / 10.29oz.



PRESSURE

Slim design knee guards with strong PE knee cup.

- Kevlar fabric material over knee cup
- Super ventilated mesh
- Lateral Eva foam padding
- Top and bottom Velcro straps around the whole leg
- **Sizes:** S, M, L



ESSENCE

Shin guards with 3 sets of flexible PE inserts for protection and better comfort.

- Strong Neoprene material
- Good sweat absorption
- 3 wide Velcro straps for better fitting
- **Sizes:** M, L

RAFAL KIŁERC

Date of birth: In the ID it's 25.10.1992



Where are you from?

Olsztyn

Why did you start riding BMX?

I wanted to try tricks that I've seen on TV when I was a child.

What is your best trick.

Every new trick is my favourite one! At the moment, it's pretending that I'm a cat.

What do you like to do when you are not riding?

I like windsurfing and jumping on a trampoline. Everything that gives a rush of adrenaline!

What makes you to progress with your riding?

My sponsors and my friends with whom I ride every day.

What type of music do you like to listen when you are riding?

Most often I listen to some soft rock, but sometimes I switch to reggae music.

The best place you have been to until now?

Skatepark in Netherlands built specially for Rebel Jam has made the biggest impact on me so far.

How long have you been riding?

I guess it's been four years until now.

Describe your perfect day.

I start my perfect day with playing loud music in my room. Then I eat a good breakfast and drink some sort of energetic beverage. Sunny weather and riding on my favourite spot for all day. In the evening I prefer to spend some time hanging out with my friends.

Can you lace a wheel?

Yeah, well I guess that I can do that.

What is the best part of your bike?

What a silly question! Every part in my bike is the best!

Who is your inspiration?

I really enjoy Harry Main style of riding.

What advice would you give for youngsters to keep riding? / What keeps you riding?

Always give 110% of what you do. Pick a goal and strive to achieve it!

VIKTORS KRONBERGS

Date of birth: 27th of August 1992

Where are you from?

I'm from Ventspils in Latvia

Why did you start riding BMX?

I started to ride when I was 11 years old. My brother bought me a bike and I took it straight to trails!

What is your best trick.

My best trick is flip doublewhip. In general big tricks are my favourite ones. I like to spend time flying high with some huge flips!

What do you like to do when you are not riding?

When not riding I'm fishing a lot. If I have time I go to my garage and do some mechanic stuff with my car. What I like most is spending time with my friends and girlfriend. Of course I'm partying a lot as well!

What makes you to progress with your riding?

My friends are the factor that pushes me forward. When I'm with them I always want to do something new to impress them.

What type of music do you like to listen when you are riding?

I listen to different kinds of music. Everything, that is loud, fast and aggressive is good to me!

The best place you have been to until now?

The best place I've ever been to is every place I've visited so far.

How long have you been riding?

I've been riding for about six years.

Describe your perfect day.

A perfect day for me would be to sit and relax together with my girlfriend. In the evening riding dirt and trying to pull a new big trick. After driving home getting couple of beers and watching some movies.

Can you lace a wheel?

Lacing a wheel is piece of cake for me!

What is the best part of your bike?

I love all of the small details on my wheels. My bike is very durable and full of different colours and I like it.

Who is your inspiration?

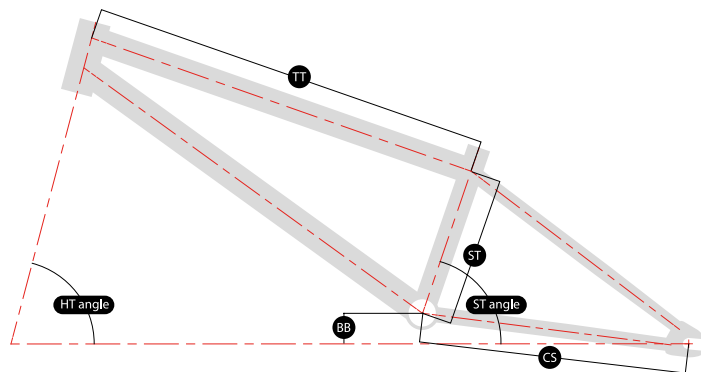
My inspiration comes from my friends who always tell me to do something new and crazy!

What advice would you give for youngsters to keep riding? / What keeps you riding?

Think of what you want to achieve and try as hard as possible to make it happen! Just ride and use everything that your life offers you. In the end everything should be all right.



FRAMES GEOMETRY



MODEL	Yuki v.2	Nami v.3 21"	Nami v.3 20.75"	Nami v.3 20.5"	Rikku	Mana	Ozzy
Top tube length	20.8"	21"	20.75"	20.5"	20.6"	20.25"	19.5"
Chain stay length	13.5"	13.5"	13.25"	13"	13.5"	13.2"	13"
Head tube angle	75°	75°	75°	75°	75°	75°	75°
Seat tube angle	71°	71°	71°	71°	71°	71°	71°
BB height	11.5"	11.5"	11.5"	11.5"	11.5"	11.5"	11.5"
Seat tube height	6.8"	8.5"	8.5"	8.5"	7.5"	7.3"	7.3"

COMPLETE BIKES SPECS

MODEL	Rikku	Mana	Ozzy
FRAME	100% Cr-Mo 4130 TT 20.6" / CS 13.5"	TT/DT Cr-Mo 4130 TT 20.25" / CS 13.2"	DT Cr-Mo 4130 TT 19.5" / CS 13"
FORK	100% Cr-Mo 4130 offset 33mm	Cr-Mo 4130 steerer tube offset 33mm	Cr-Mo 4130 steerer tube offset 33mm
BARS	100% Cr-Mo 4130 28" / 8.25"	100% Cr-Mo 4130 28" / 8.25"	100% Cr-Mo 4130 28" / 8.25"
GRIPS	Shamann	Shamann	Shamann
STEM	alu front load, reach 50mm	alu front load, reach 50mm	alu front load, reach 50mm
HEADSET	integrated sealed bearings	integrated sealed bearings	integrated sealed bearings
CRANKS	3-pcs tubular heat-treated Cr-Mo 4130	3-pcs tubular heat-treated Cr-Mo 4130	3-pcs tubular heat-treated Cr-Mo 4130
PEDALS	Cookie	Cookie	Cookie
BB	Spanish 19mm, sealed bearings	Spanish 19mm, sealed bearings	Spanish 19mm, sealed bearings
SPROCKET	Zulu 25T alu 7075	Cr-Mo 25T	Cr-Mo 25T
CHAIN	Core	Core	Core
FRONT HUB	3/8" male axle, 36H sealed bearings	3/8" male axle, 36H loose ball bearings	3/8" male axle, 36H loose ball bearings
REAR HUB	Sector OEM, 36H sealed bearings, 9T driver RHD	Sector OEM, 36H sealed bearings, 9T driver RHD	Sector OEM, 36H sealed bearings, 9T driver RHD
SPOKES	black, steel brass nipples	black, steel brass nipples	black, steel brass nipples
RIMS	Shining 36H, double wall	Shining 36H, double wall	Shining 36H, double wall
FRONT TIRE	Maxxis Gritter 2.1"	Innova 2.0"	Innova 2.0
REAR TIRE	Maxxis Gritter 1.85"	Innova 2.0"	Innova 2.0
SEAT	Sticky Combo	Sticky Combo	Sticky Combo
BRAKE/LEVER	Rikku OEM	Mana OEM	Ozzy OEM
PEGS	1 pair, steel, 38x110mm	-	-
WEIGHT	10.5kg / 23.14lbs w/o pegs	10.9kg / 24.02lbs	11.1kg / 24.46lbs



SPOKES LENGTH

HUB	RIM	RIM SIZE	HOLES	INTER-SECTIONS	RECOMMENDED SPOKES LENGTH
Razor/Razor v.2	Fortress/Raider	20"	36	3	182/180
Sector/Sector RHD/Sector LHD	Fortress/Raider	20"	36	3	182/180
B-One	Fortress/Raider	20"	36	3	184
Razor Park	Fortress/Raider	20"	36	3	186
Razor Park	Fortress/Raider	20"	32	3	188
Razor Street	Fortress/Raider	20"	36	3	184
Razor Street	Fortress/Raider	20"	32	3	186
Sector Front	Fortress/Raider	20"	36	3	186
B-Two	Fortress/Raider	20"	36	3	184
B-Two	Fortress/Raider	20"	32	3	186

HUBS DIMENSIONS

HUB MODEL	PITCH CIRCLE DIAMETER L (PCD LEFT)	PITCH CIRCLE DIAMETER R (PCD RIGHT)	FLANGE DISTANCE L (LEFT)	FLANGE DISTANCE R (RIGHT)	SPOKE HOLES DIAMETER
Razor/Razor v.2	45	58	27	26	2.5
Sector/Sector RHD/Sector LHD	45	58	29	29	2.5
B-One	45	45	28.5	28.5	2.5
Razor Park	34	34	39.5	39.5	2.5
Razor Street	38	38	36.5	36.5	2.5
Sector Front	34	34	39.5	39.5	2.5
B-Two	38	38	31.2	31.2	2.5

All dimensions in mm.
Please notice that some spokes calculators accept only values rounded to the full millimetre.

MAX. TIGHTENING TORQUE

FRAMES	Gyro tabs	4 Nm
	Integrated seat post clamp	6 Nm
FORK	Cap	10 Nm
CRANKS	Thorn/Flare assembly tool	50 Nm
	Thorn/Flare crank bolts	15 Nm
	Keipo/Chukka Two crank bolts	10 Nm
	Keipo/Chukka Two tightening bolts M6x18	12 Nm
	Sprocket bolts	20 Nm
BBS	Euro BB cups	40 Nm
HUBS	Sector/Sector Front tightening nuts	20 Nm
	Razor/Razor Street 3/8" female bolts	25 Nm
	Razor Park M8 female bolts	18 Nm
STEMS	Reign/Reflect frontplate bolts	12 Nm
	Reign/Reflect steerer bolts	10 Nm
PEDALS	Assembling in cranks	35 Nm
	Pins	5 Nm
HEADSETS	Top cap	8 Nm
SEATS	Pivotal bolt	18 Nm

DARTBMX.COM



facebook.com/dartbmx